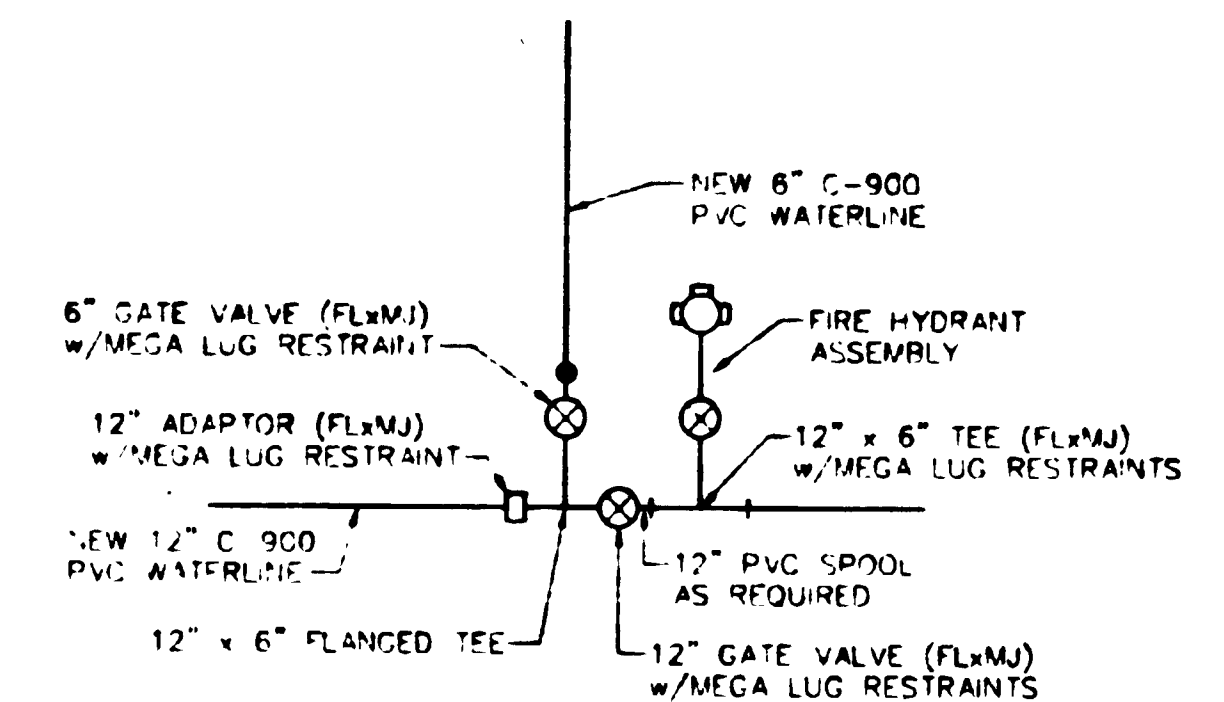
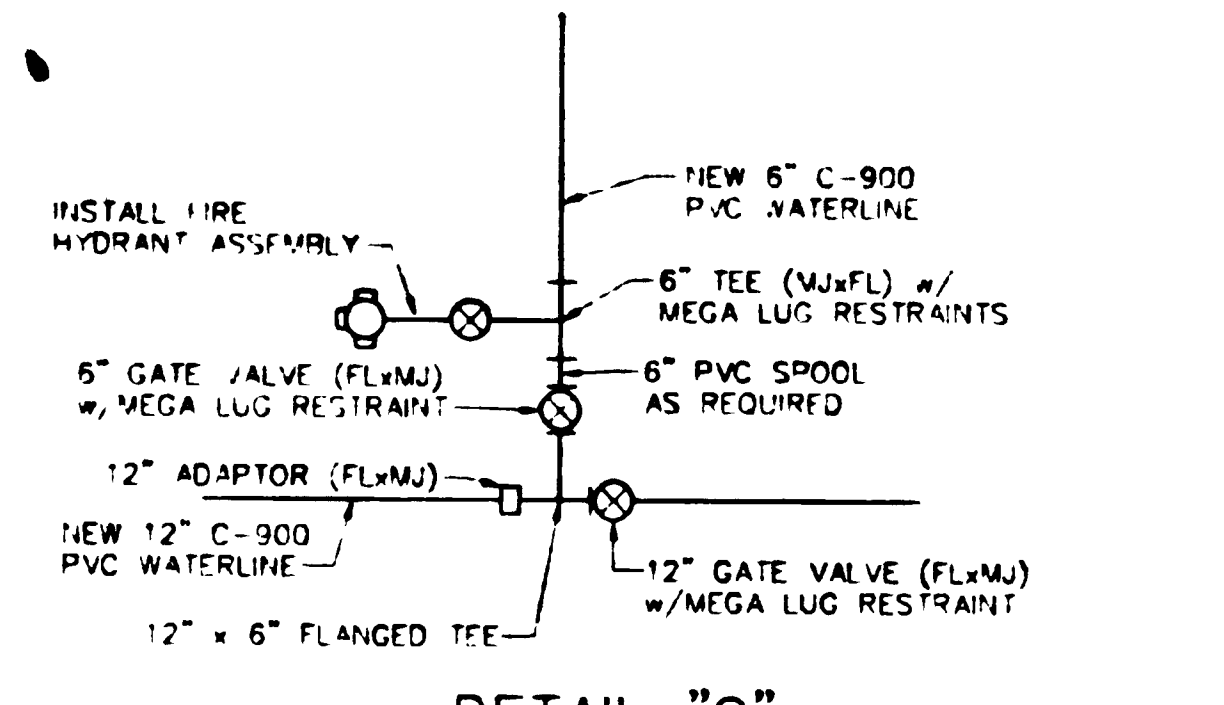


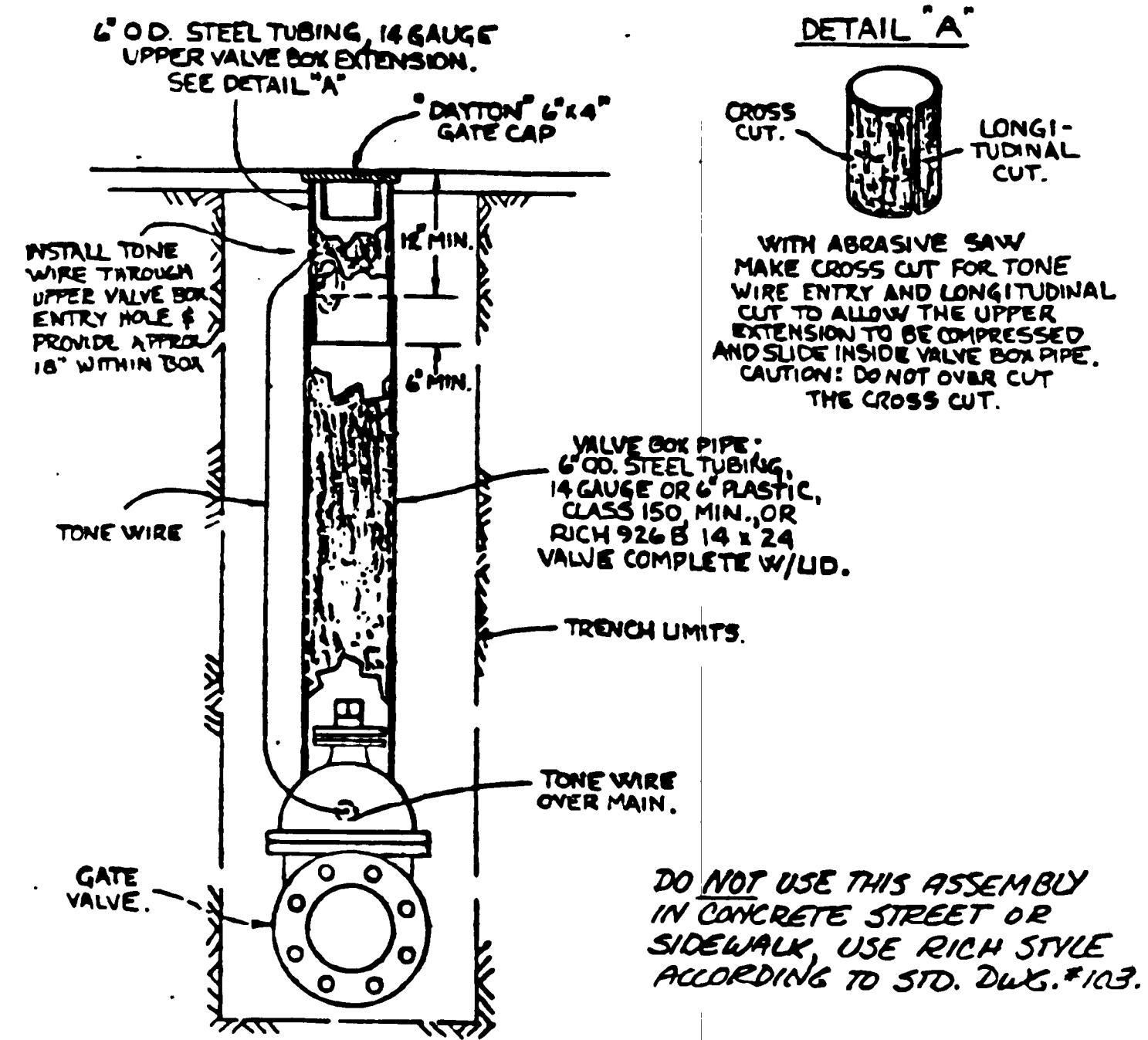
DETAIL "A"  
NOT TO SCALE



DETAIL "B"  
NOT TO SCALE

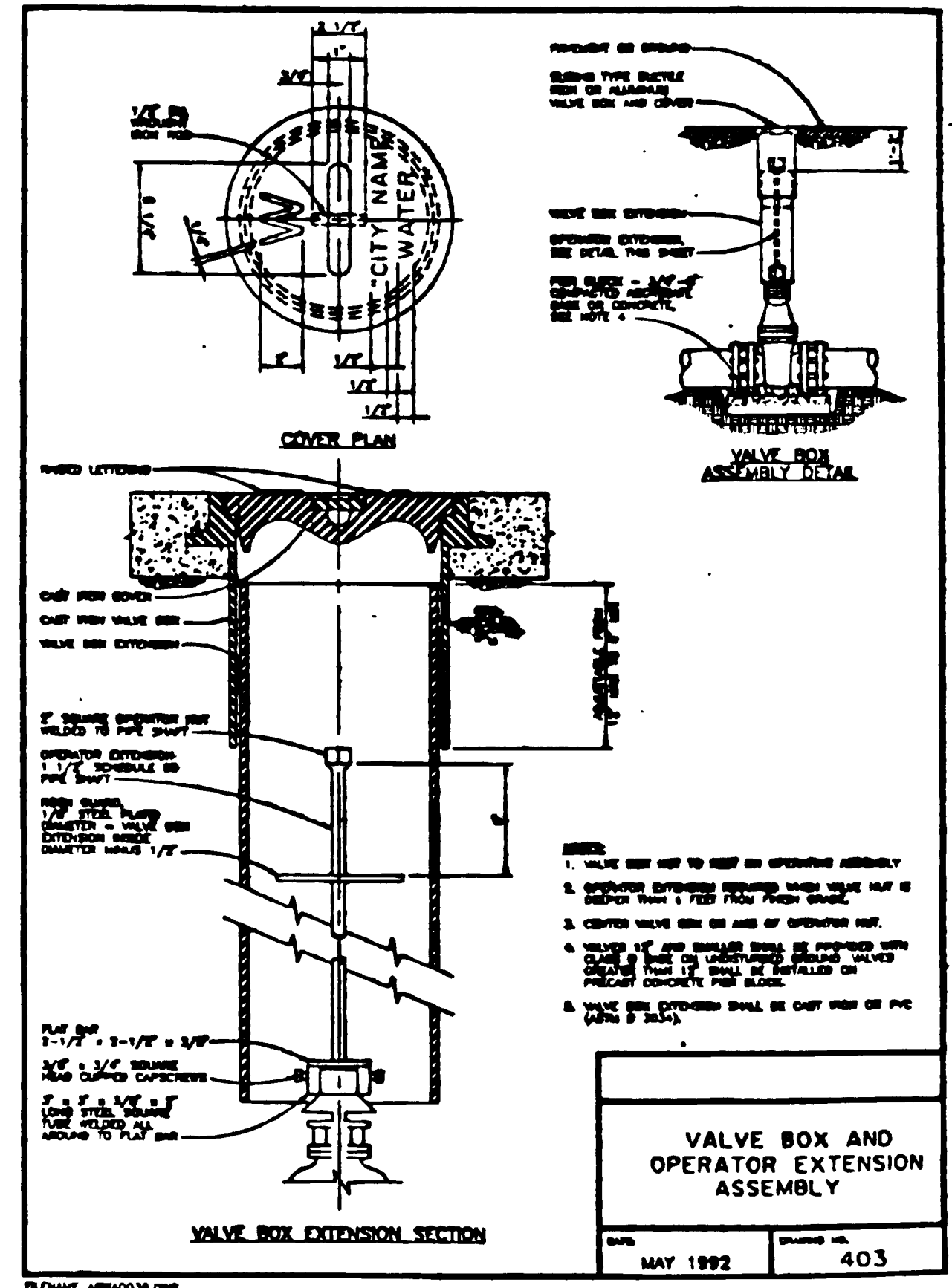


DETAIL "C"  
NOT TO SCALE

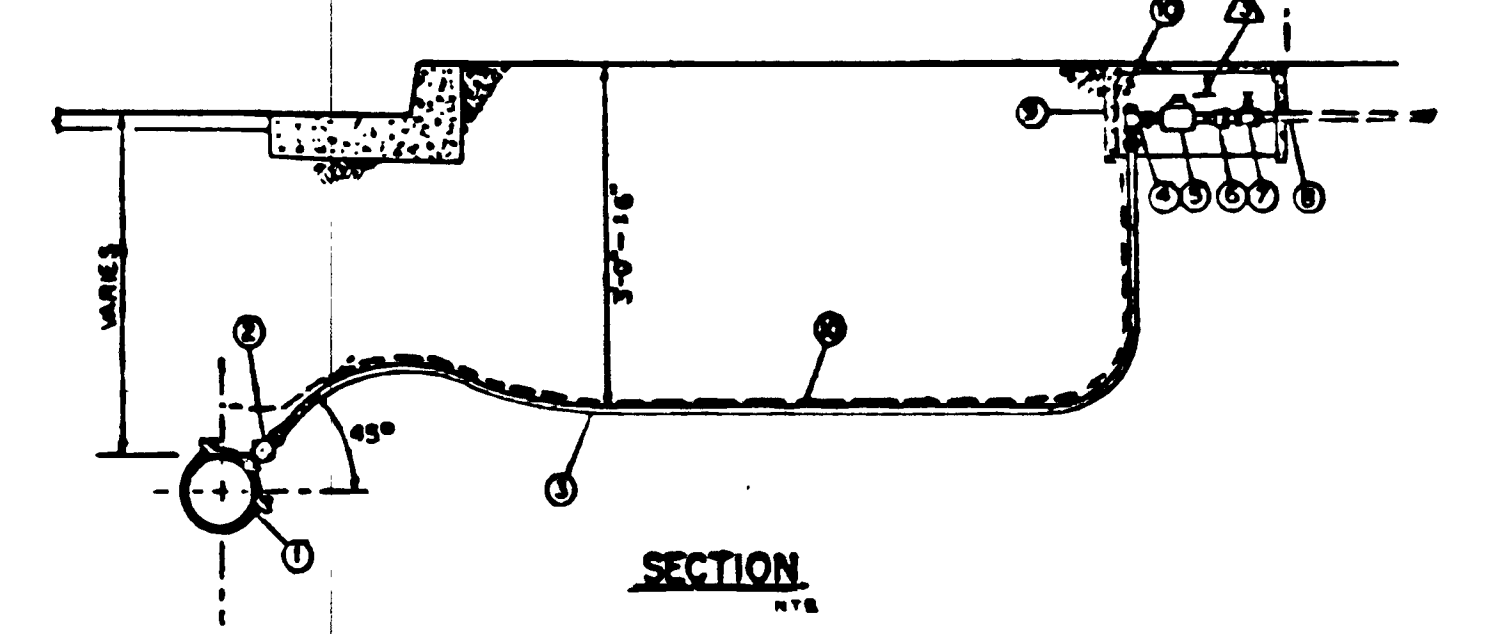
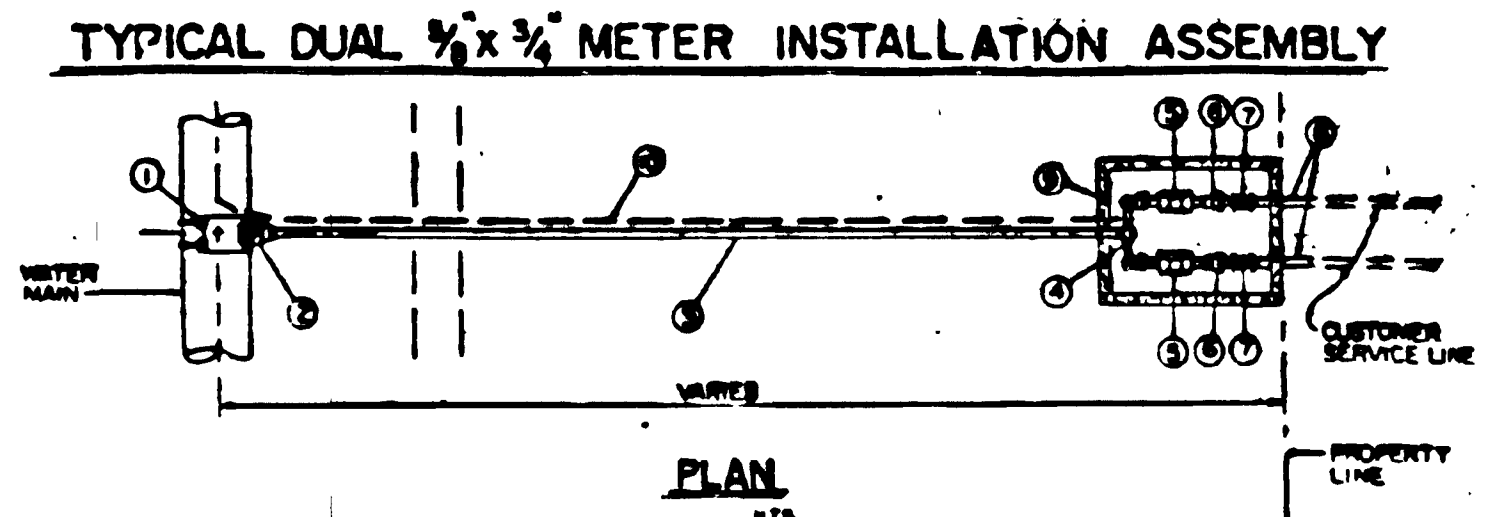


GENERAL NOTES:  
1. VALVE BOX SHALL NOT TRANSMIT SHOCK OR STRESS TO VALVE.  
2. VALVE BOX SHALL BE CENTERED AND PLUMB OVER OPERATING NUT AND SHALL BE FLUSH WITH THE FINAL STREET OR SURFACE GRADE.

ALTERNATE VALVE & VALVE BOX ASSEMBLY FOR AC PAVEMENT, GRAVEL & NATIVE GROUND

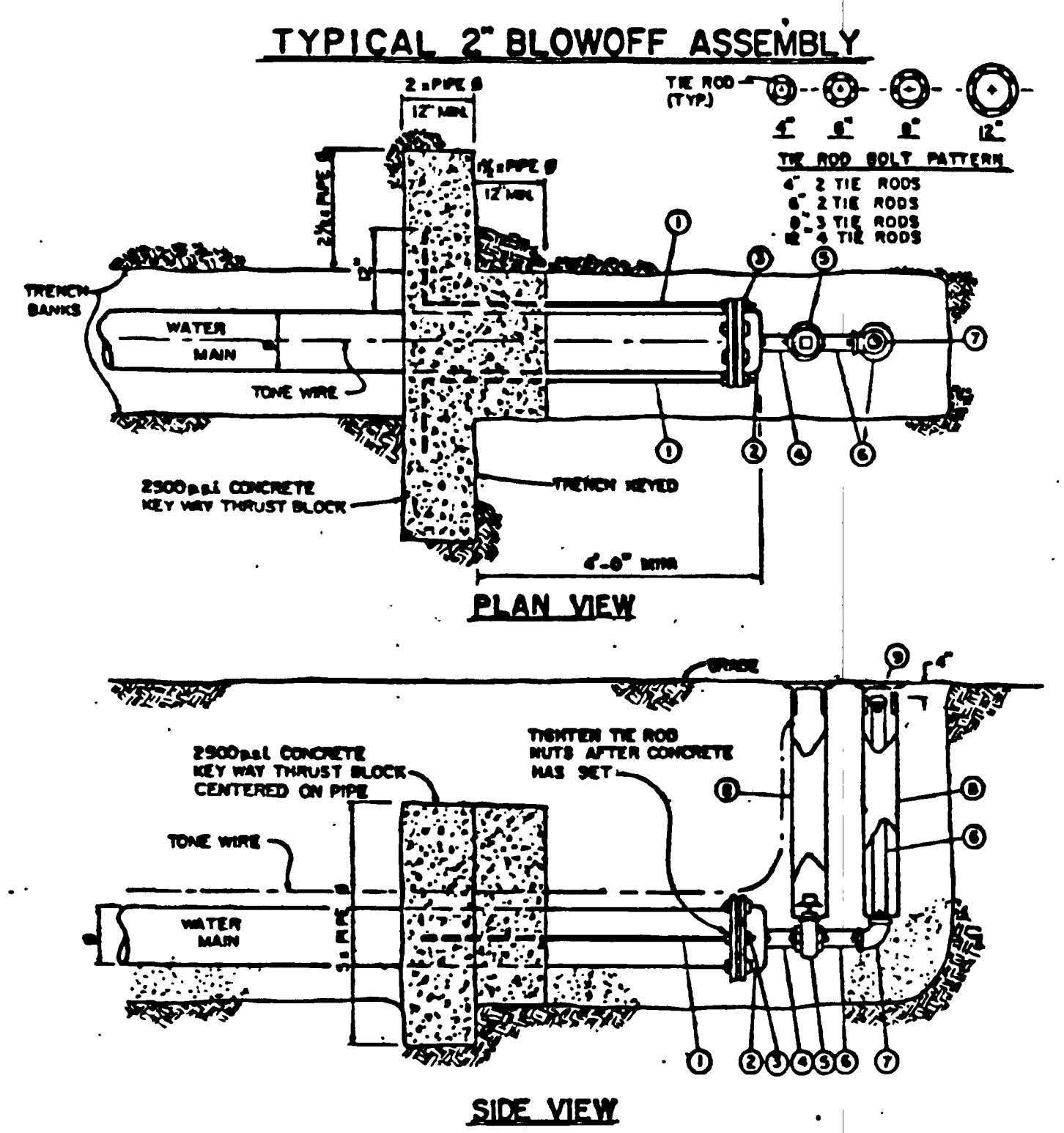


ITEM NO.	SIZE	DESCRIPTION	TYPE	QTY
1	AS REQ'D	SERVICE SADDLE	FORD, BRASS S-91	1
2	1"	CORP STOP	FORD, P-1100	1
3	1"	SERVICE PIPE	200 HE HOLY POLYETHYLENE CTS PIPE	AS REQ'D
4	1"	BRANCH VALVE ASSEMBLY	FORD, UV-43-32 14" width	1
5	3/4" x 3/4"	METER	Neptune T-10 Collins Reader	2
6	3/4"	STRAIGHT CHECK VALVE	HS-11323 (FIPT x FIPT)	2
7	3/4"	VALVE Customer	B-13-232W	2
8	-	CUSTOMER SERV.	PER STATE PLUMBING CODE	1
9	-	METER BOX	Pibastic	1
10	NO. 12	TONE WIRE		AS REQ'D

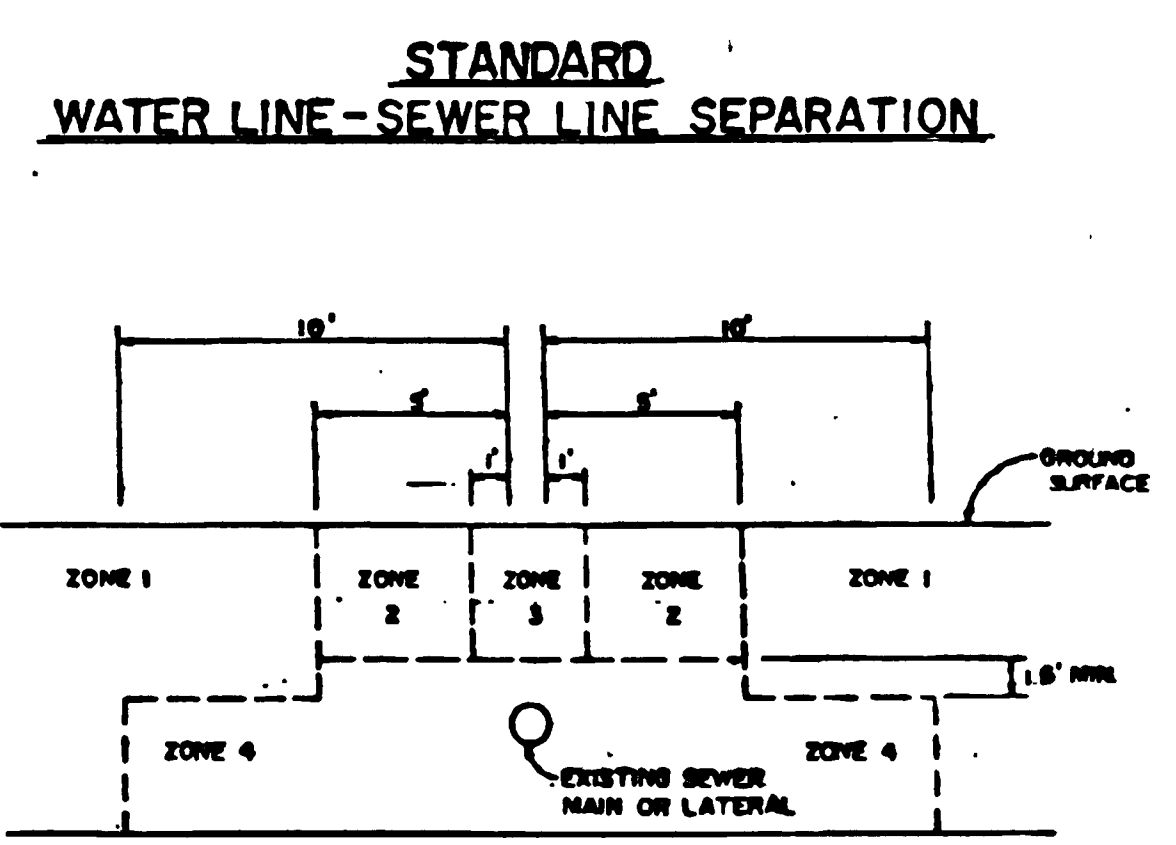


ITEM NO.	SIZE	DESCRIPTION	TYPE	QTY
1	AS REQ'D	SERVICE SADDLE	FORD, BRASS S-91	1
2	1"	CORP STOP	FORD, P-1100	1
3	1"	SERVICE PIPE	200 HE HOLY POLYETHYLENE CTS PIPE	AS REQ'D
4	1"	BRANCH VALVE ASSEMBLY	FORD, UV-43-32 14" width	1
5	3/4" x 3/4"	METER	Neptune T-10 Collins Reader	2
6	3/4"	STRAIGHT CHECK VALVE	HS-11323 (FIPT x FIPT)	2
7	3/4"	VALVE Customer	B-13-232W	2
8	-	CUSTOMER SERV.	PER STATE PLUMBING CODE	1
9	-	METER BOX	Pibastic	1
10	NO. 12	TONE WIRE		AS REQ'D

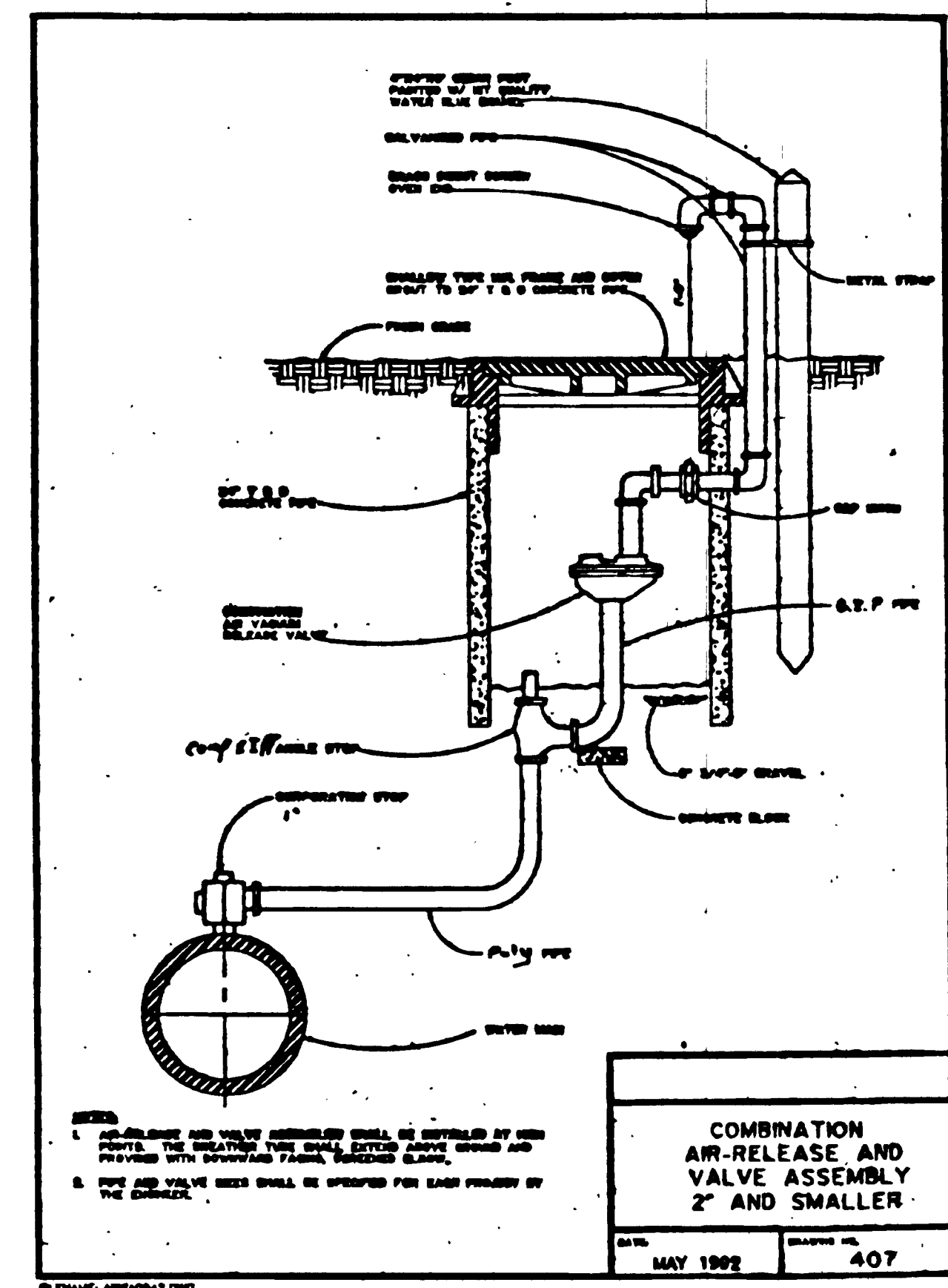
NOTES:  
 Δ OR APPROVED EQUAL. SEE GENERAL SPECIFICATIONS.  
 TYPE AS APPROVED BY MANUFACTURER FOR WATER MAIN TYPE & SIZE.  
 Δ TOP OF METER SHALL BE 4" TO 6" BELOW BOTTOM OF LID.



LEGEND:  
 ① 3/4" DIA. STEEL TIE ROD, H.C. THIS ONE END, BITUMASTIC COATED AFTER INSTALLATION.  
 ② MAIN SIZE CAP WITH 2" I.P. THRU OUTLET (M.A. & F.I.P.T.)  
 ③ STAR "SUPERSTAR TIEBOLT" AND "SUPERSTAR TIENUT" (OPTIONAL)  
 ④ 2" GALVANIZED IRON PIPE NIPPLE, BITUMASTIC COATED AFTER INSTALLATION.  
 ⑤ 2" GATE VALVE (FLPT.) WITH 2" SQ. OPERATING NUT.  
 ⑥ 2" GALVANIZED IRON PIPE, LENGTH AS REQUIRED.  
 ⑦ 2" GALVANIZED 90° ELBOW (R.L.A.T.)  
 ⑧ 6" STANDARD VALVE BOX WITH LID.  
 ⑨ 2" CAP, HAND TIGHTEN ONLY.



NOTES:  
 1. ALL REFERENCE TO SEWERS SHALL MEAN SANITARY SEWERS.  
 2. IN SITUATIONS INVOLVING A NEW WATER LINE PARALLEL TO AN EXISTING GRAVITY SEWER MAIN OR SEWER LATERAL, THE SEPARATION BETWEEN THE TWO SHALL BE AS INDICATED ABOVE.  
 3. IN SITUATIONS WHERE A NEW WATER LINE CROSSES AN EXISTING GRAVITY SEWER MAIN OR SEWER LATERAL, THE SEPARATION BETWEEN THE TWO SHALL BE AS FOLLOWS:  
 A) WHEREVER POSSIBLE, THE BOTTOM OF THE WATER LINE SHALL BE 18 FEET ABOVE THE TOP OF THE SEWER LINE AND ONE FULL LENGTH OF THE WATER LINE SHALL BE CENTERED AT THE CROSSING.  
 B) WHERE IT IS NOT POSSIBLE FOR THE WATER LINE TO BE 18 FEET ABOVE THE SEWER LINE, OR WHERE THE WATER LINE PASSES UNDER THE SEWER LINE, THE EXISTING SEWER LINE SHALL BE EXPOSED FOR A DISTANCE OF 10 FEET ON EACH SIDE OF THE CROSSING AND EXAMINED TO DETERMINE THE CONDITION OF THE PIPE AND JOINTS. DEPENDING ON THE CONDITION FOUND, THE SEWER LINE SHALL BE EITHER REPLACED BY A FULL LENGTH CENTERED ON THE CROSSING POINT OF PVC PRESSURE PIPE (ASTM D-2241, SDR 32.5), HIGH-DENSITY PE PIPE (DR1900-PIPE 1000), DUCTILE-IRON, CLASS 50 (AWWA C-151), OR OTHER ACCEPTABLE PIPE, OR ELSE ENCASED IN A REINFORCED CONCRETE JACKET FOR A DISTANCE OF 10' ON BOTH SIDES OF THE CROSSING, AT THE DISCRETION OF THE ENGINEER.



Rev.	Date	Dwg	Description
1	4/28/94	DAF	NON-RECYCLED WATER MAIN COMMENTARY
2	7/24/98	HRM	AS BUILT

FILED  
 Date: 2-11-1998 By: JP  
 This survey consists of:  
 Map:  
 Narrative:  
 Corner Ppt.:  
 DOUGLAS COUNTY SURVEYOR

INSPECTED BY:  
 SURVEYING SERVICE, INC.  
 P. O. Box 130  
 ROSEBURG, OREGON 97470  
 EXPIRES 6/30/99

i.e. ENGINEERING  
 Project Name:  
 LEBLANC SUBDIVISION  
 STREET IMPROVEMENT PLANS  
 Title:  
 WATERLINE DETAILS  
 DES OK PROJECT NO. 137-01  
 DWG DAF DATE: DECEMBER, 1995  
 CHK SNL SCALE: NO SCALE  
 APP MAP SHEET 7 OF 7

DESIGNED BY MIKE A. PARKER  
 INSPECTED BY H. RONALD HUGHES

REGISTERED PROFESSIONAL ENGINEER  
 MIKE A. PARKER  
 OREGON  
 JULY 17, 1988  
 EXPIRES 12/31/98

DO NOT DUPLICATE  
 MOVED TO CO. RD. 288A