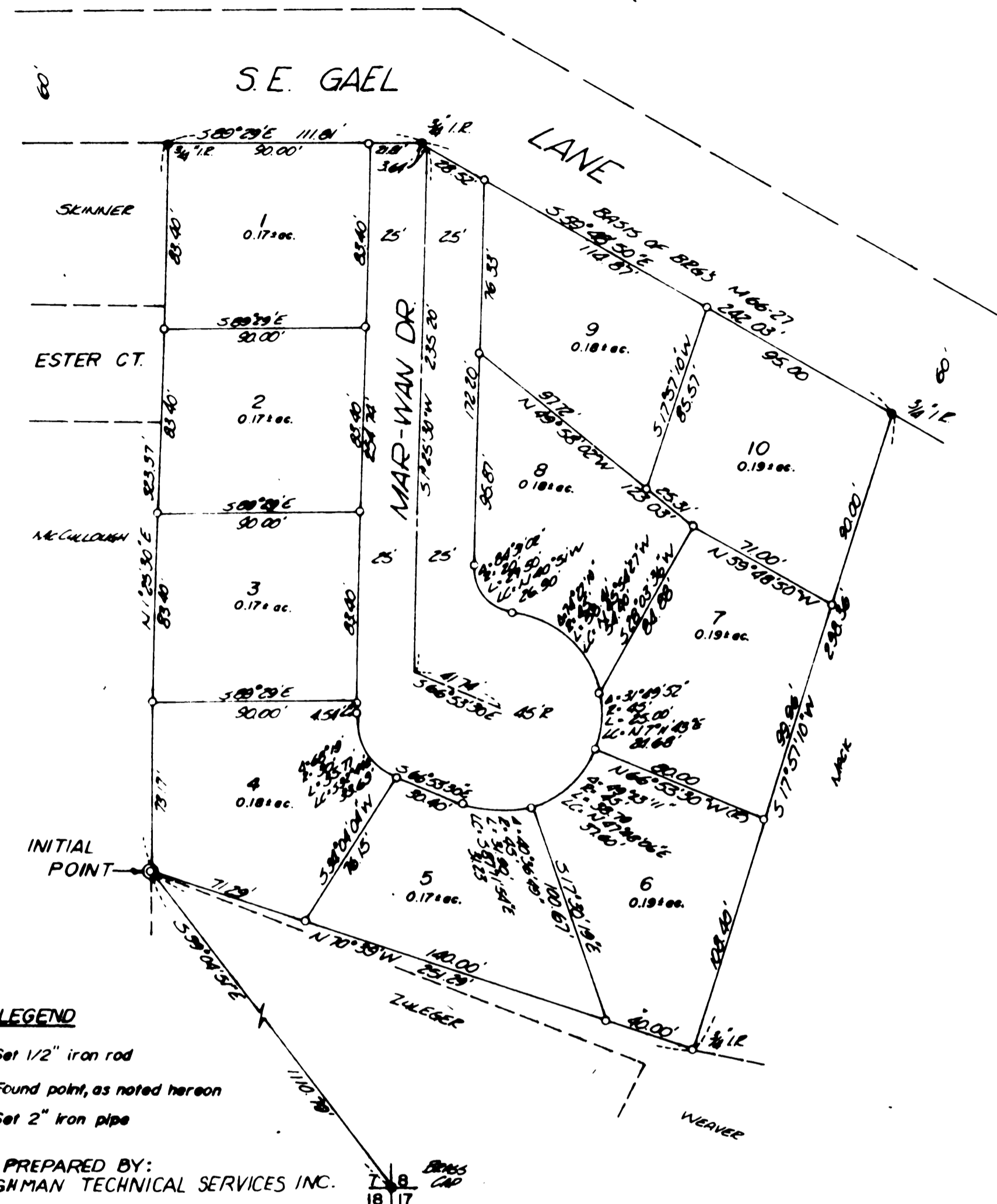


**AS CONSTRUCTED
A & K ESTATES**
SITUATED IN SECTION 7, T.30S. R.5W.W.M.
FEBRUARY 1979 SCALE 1"=50'

FILED
AUG 10 1987
COUNTY SURVEYOR
DOUGLAS COUNTY, ORE.



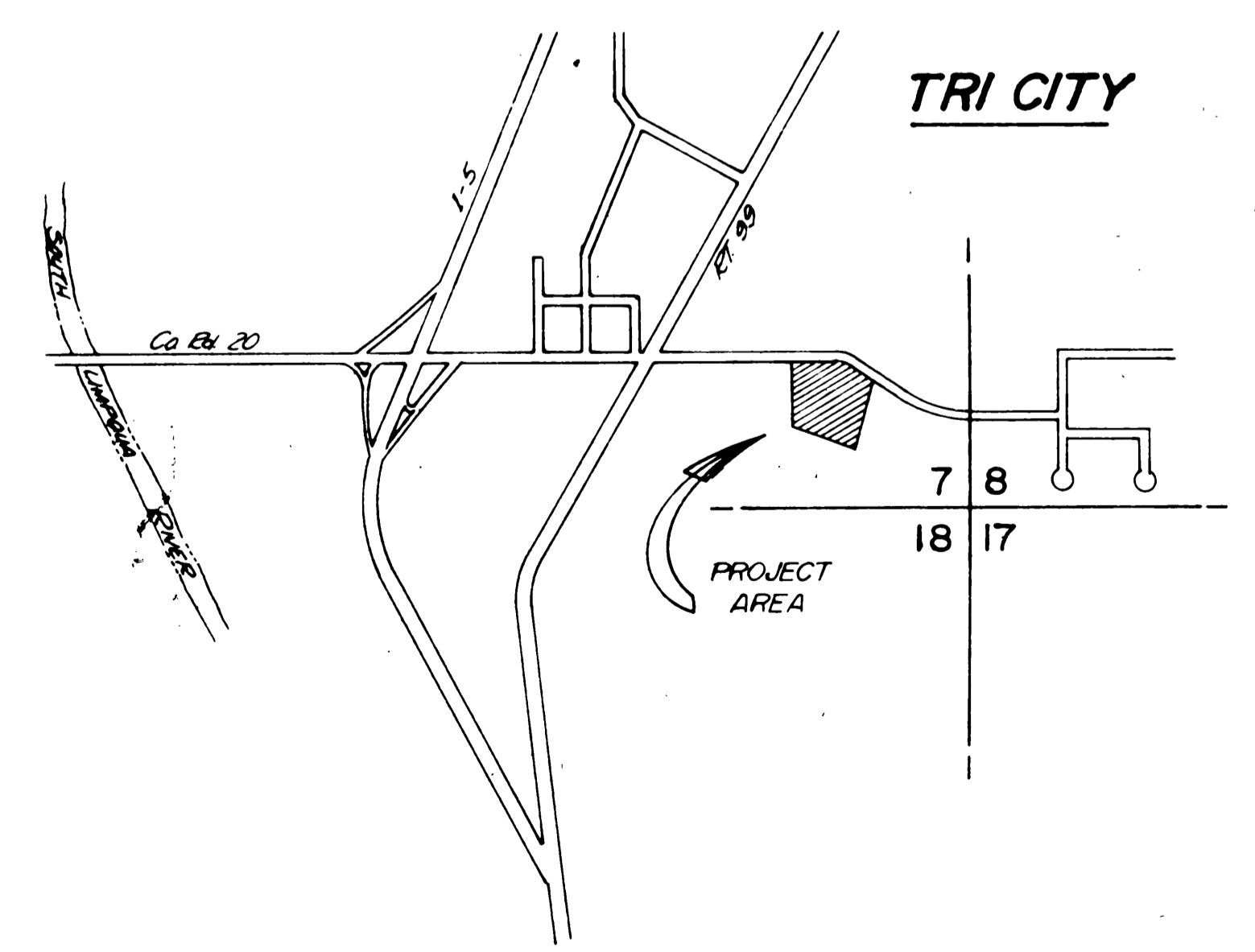
SCHEDULE OF ITEMS

ITEM	DESCRIPTION	ESTIMATED QUANTITY	UNIT
1.	Clearing & Grubbing	All	Lump Sum
2.	Common Street Excavation	1400	Cu. Yd.
3.	Type B Curb & Gutter Combination	650	Lin. Ft.
4.	Asphalt Concrete (Class "B")	190	Ton
5.	Crushed Aggregate Base (1"-0")	684	Cu. Yd.
6.	Storm Sewer		
6.1	12 in. Dia. Pipe	60	Lin. Ft.
6.2	Construct "V" Ditch	290	Lin. Ft.
7.	Sanitary Sewer		
7.1	Manhole	2	Each
7.2	Cleanout	1	Each
7.3	8 in. Dia. Pipe	255	Lin. Ft.
7.4	6 in. Dia. Pipe	85	Lin. Ft.
7.5	6 in. Dia. Service Lateral	225	Lin. Ft.
8.	Domestic Water System		
8.1	2 in. Blowoff Assembly	1	Each
8.2	6 in. Pipe Main	200	Lin. Ft.
8.3	4 in. Pipe Main	50	Lin. Ft.
8.4	6 in. Gate Valve Assembly	1	Each
8.5	6 in. Fire Hydrant Assembly	1	Each
8.6	Lin. Service To Each Lot	9	Each

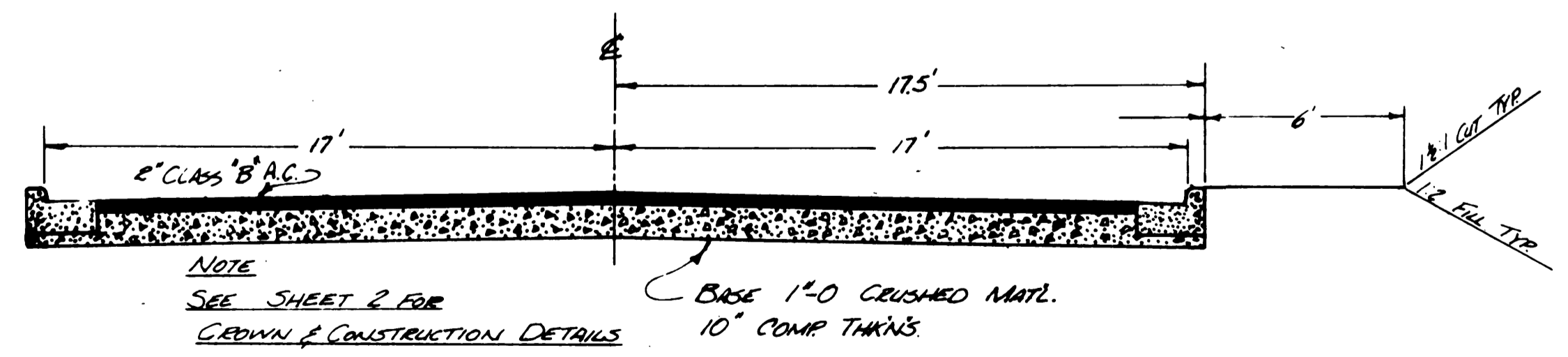
ENGINEERS CERTIFICATION OF INSPECTION
 I, GEORGE E. GRUBB
 P.E. # 4250
 being a registered professional engineer in the State of Oregon, do hereby certify that the work hereon was done in substantial conformance with the plans and specifications.
 Dated this day 20 November 1980

CHARLES L. YOUNGMAN
 CIVIL & STRUCTURAL ENGINEERING
 2800 COMMERCIAL ST. S.E. SALEM, ORE. 97302
 (503) 364-8207

VICINITY MAP



TYPICAL SECTION



MAR-WAN DR.
 CONSTRUCTED TO COUNTY STANDARDS-GALLAHAD LOOP
 NOT CONNECTED TO CO. RD. THEREFORE NOT
 MAINTAINED BY THE CO. AT THIS TIME.