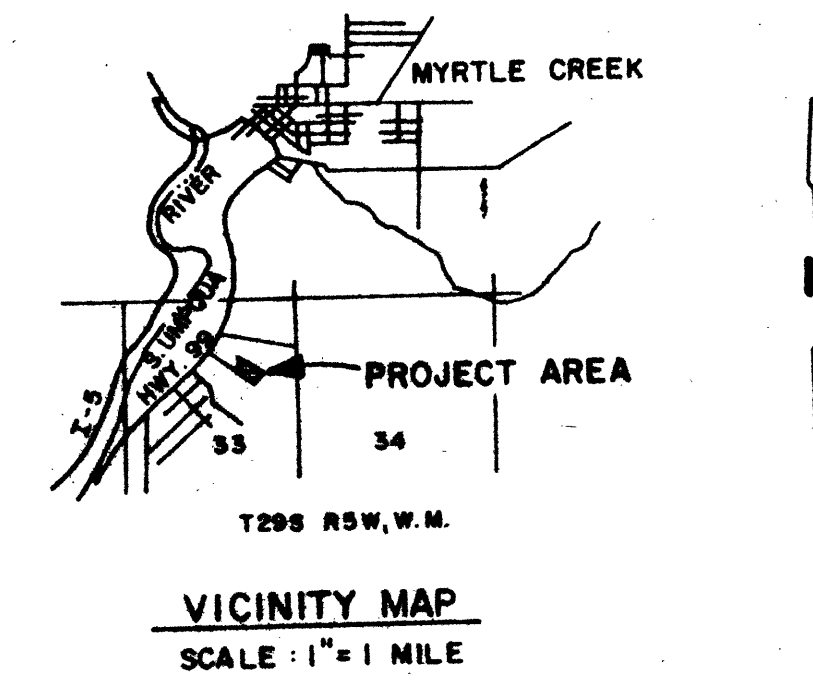
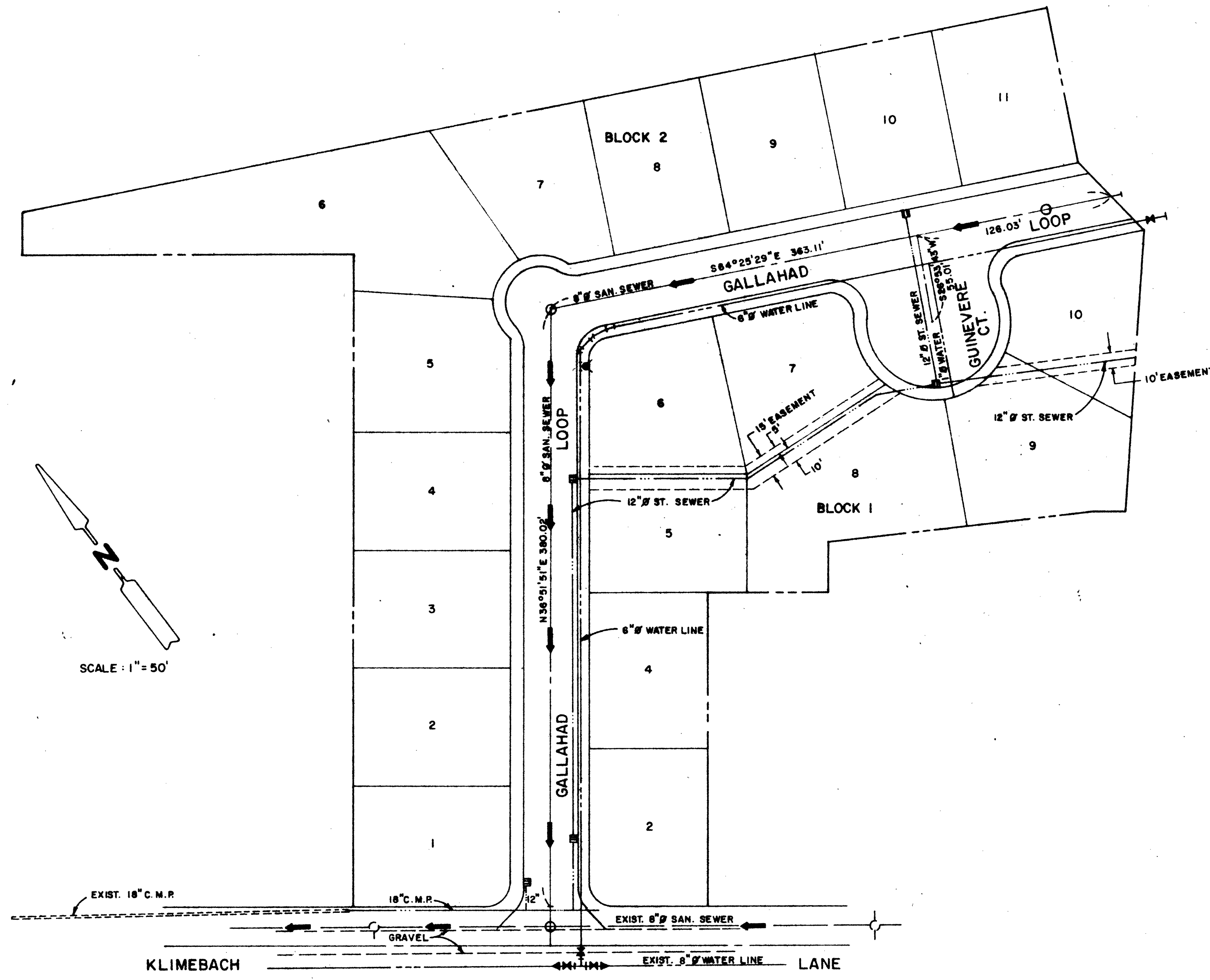


VIC J. & KIP A. RICE, MYRTLE CREEK, OREGON
CAMELOT PLACE SUBDIVISION - PHASE I
 STREET, STORM DRAINAGE, WATER & SANITARY SEWER IMPROVEMENTS

FILED
 AUG 10 1987
 COUNTY SURVEYOR
 DOUGLAS COUNTY, ORE.



INDEX OF SHEETS

- 1. INDEX SHEET
- 2. STREET & STORM DRAINAGE IMPROVEMENTS
- 3. WATER & SANITARY SEWER IMPROVEMENTS
- 4. MISCELLANEOUS DETAILS

AS BUILT 12-9-77 JVS

15

	VIC J. & KIP A. RICE		MYRTLE CREEK, OREGON	
	CAMELOT PLACE SUBDIVISION - PHASE I			
	INDEX SHEET			
	C & G ENGINEERING ENGINEERING ARTS BUILDING 2276 Commercial, S.E. SALEM, OREGON		SHEET OF 4 1	J.C. 8150.0042
	DESIGNED: CPW DRAWN: PIW CHECKED:	SCALE AS NOTED	DATE: JULY, 1977	

CONSTRUCTION TO COUNTY STANDARDS SHALL BE DONE
 NOT CONNECTED TO COUNTY R.C., THEREFORE NOT APPROVED
 BY THE C.S. AT THE TIME.