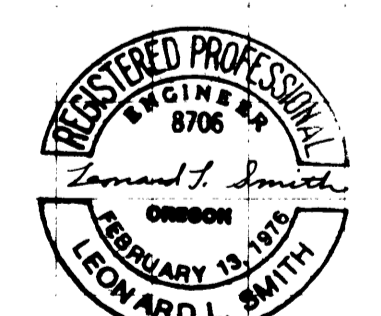
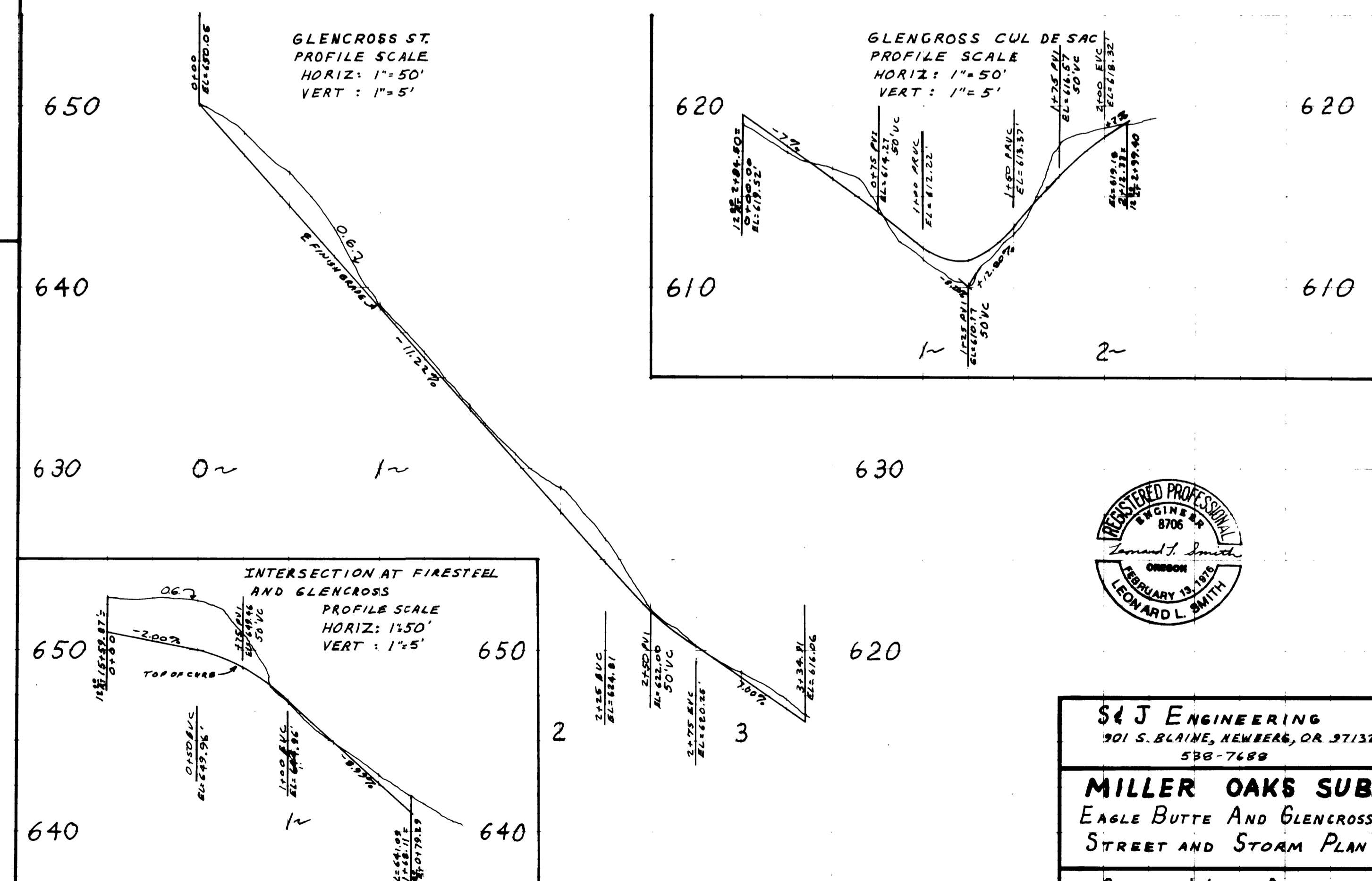
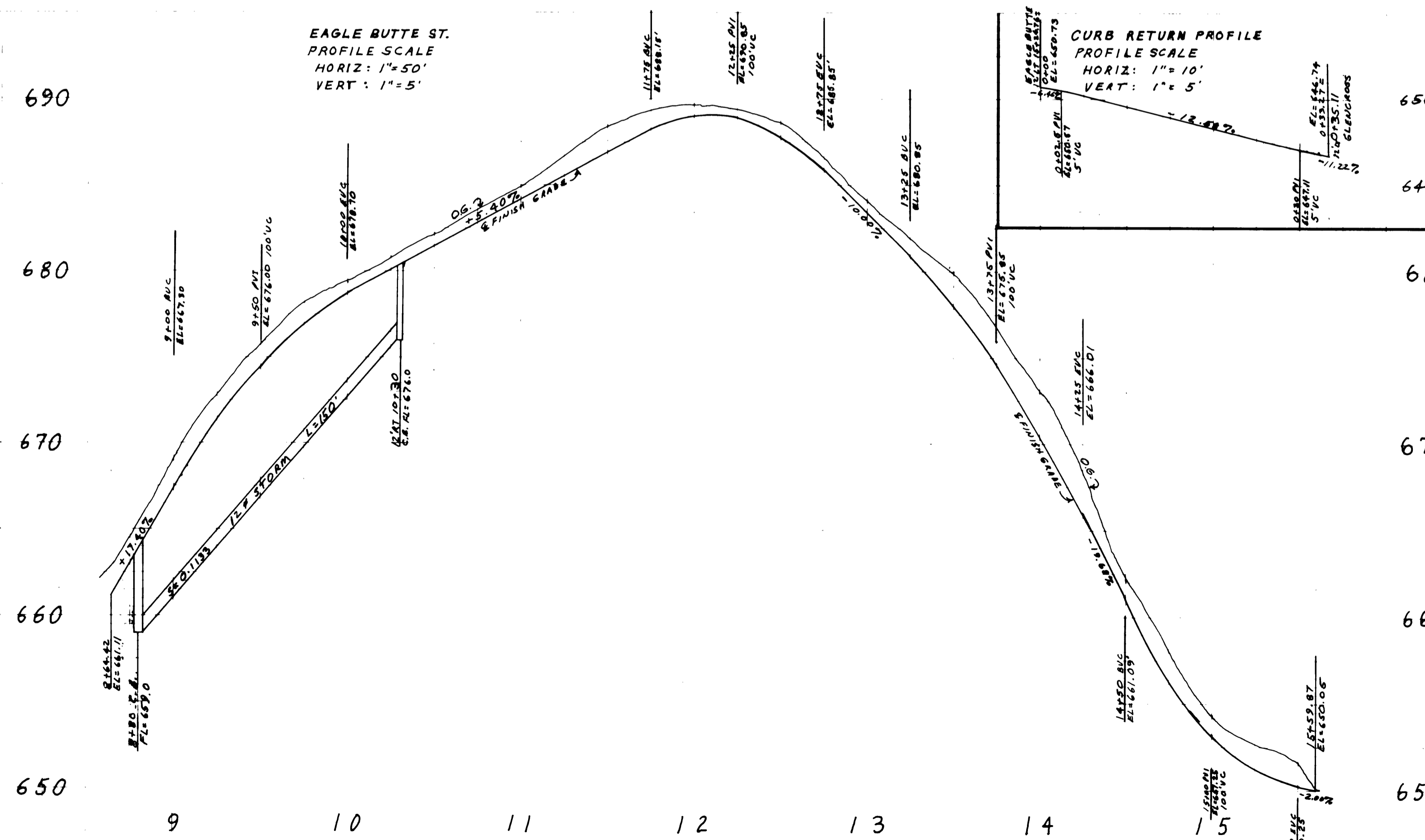
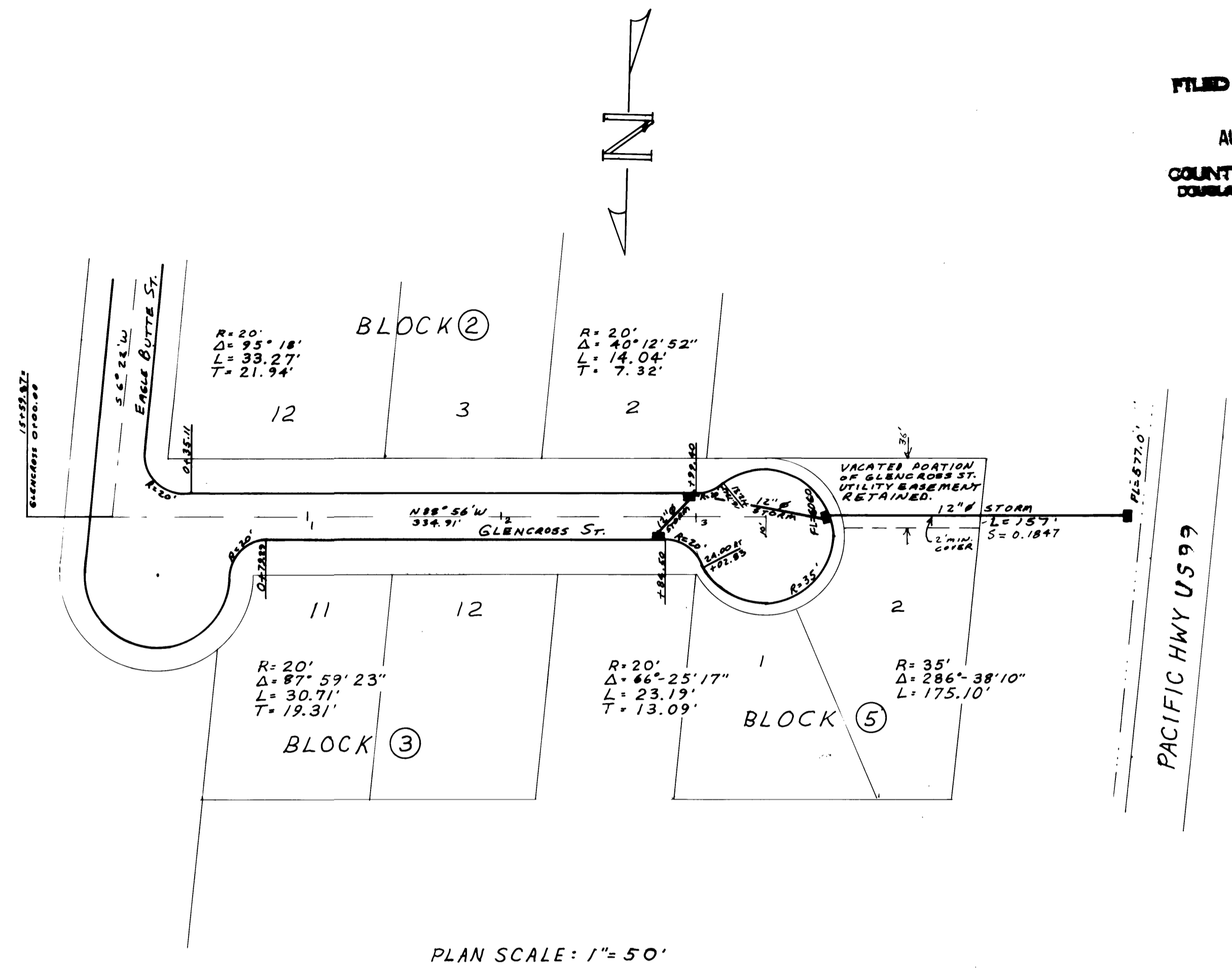
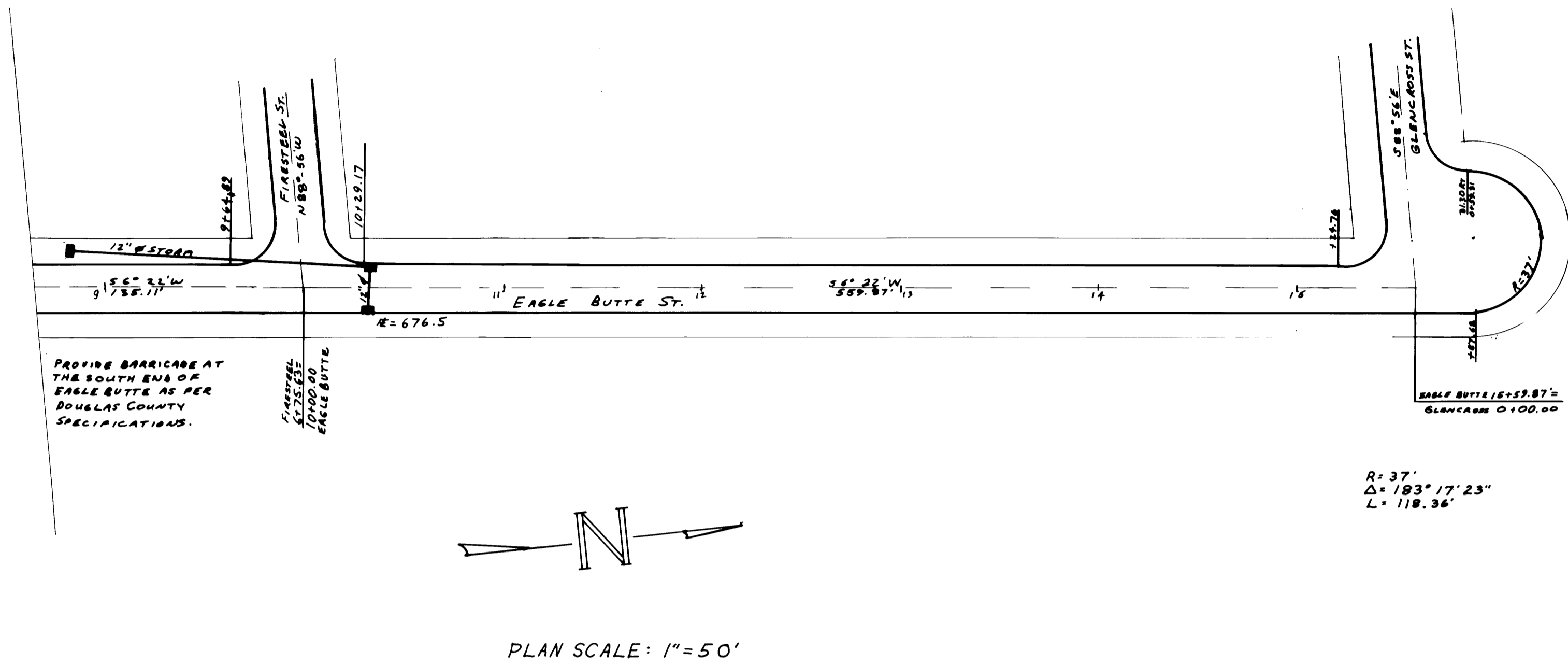


FILED  
AUG 10 1987  
COUNTY SURVEYOR  
DOUGLAS COUNTY, ORE



**S&J ENGINEERING**  
901 S. BLAINE, NEWBERG, OR 97132  
538-7689

**MILLER OAKS SUB.**  
EAGLE BUTTE AND GLENCROSS STS.  
STREET AND STORM PLAN

**GOLDEN WEST DEVELOPMENT**  
P.O. BOX 646, WILSON, OR 97146, 672-4751

SHEET # 3 OF 3