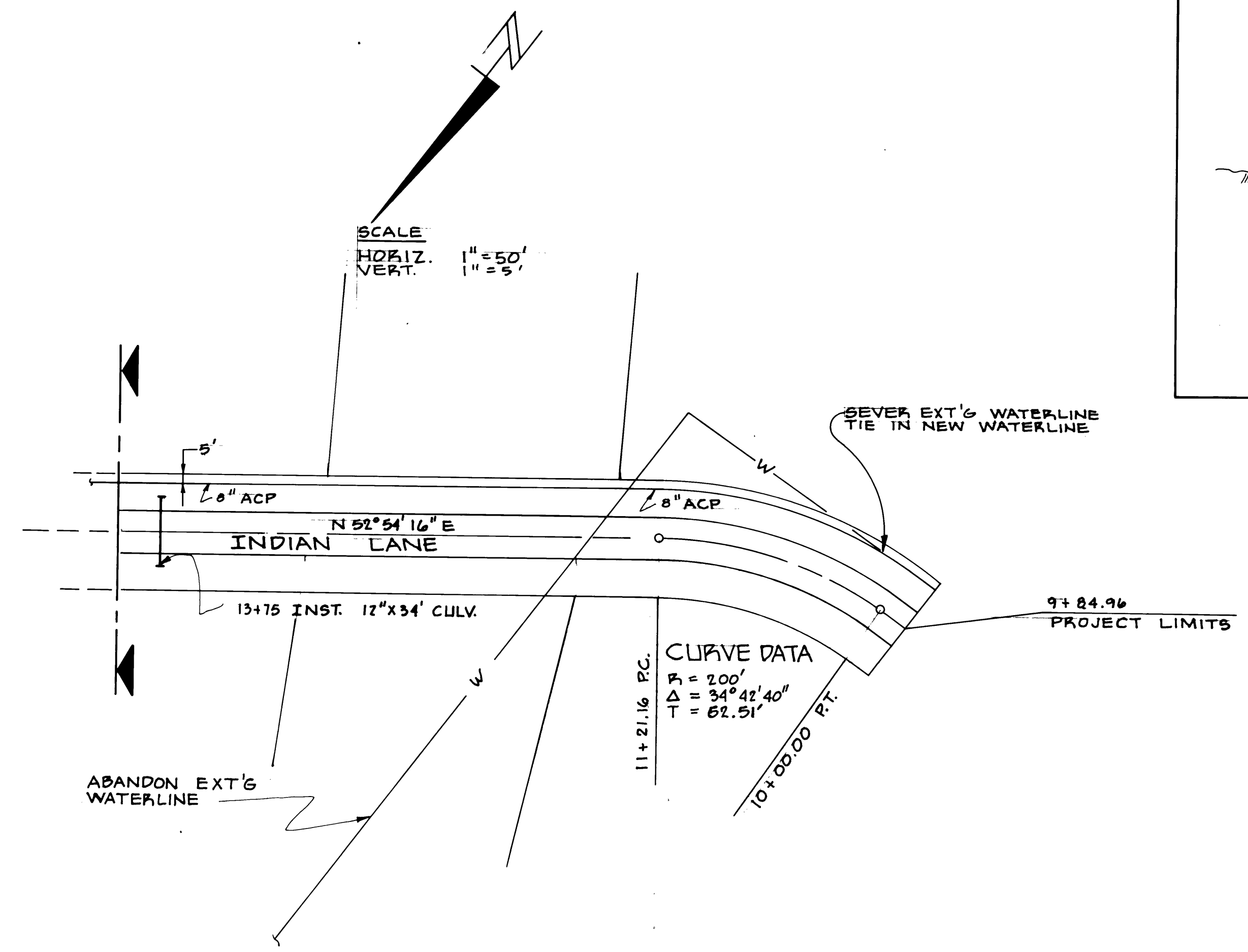
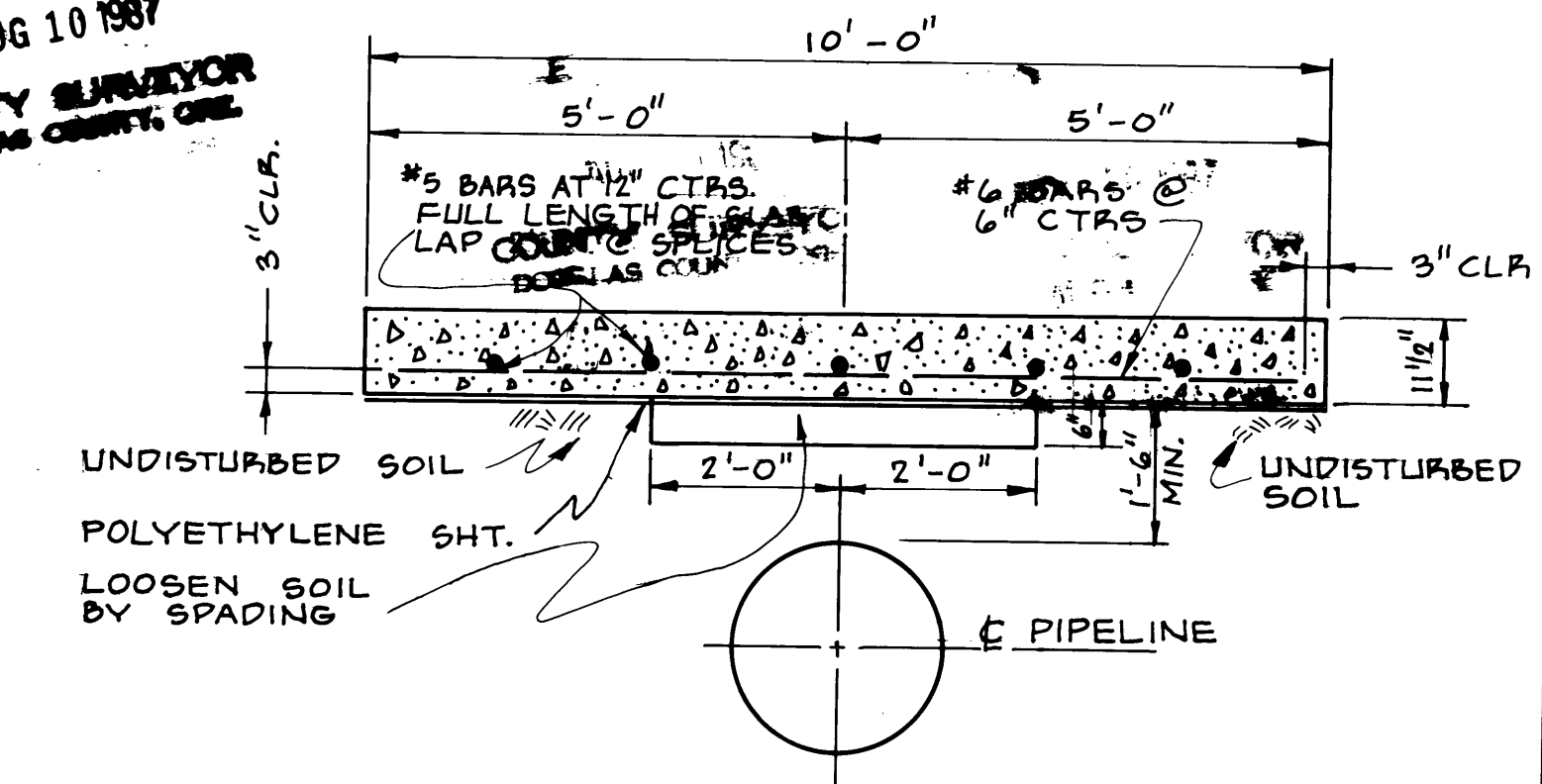
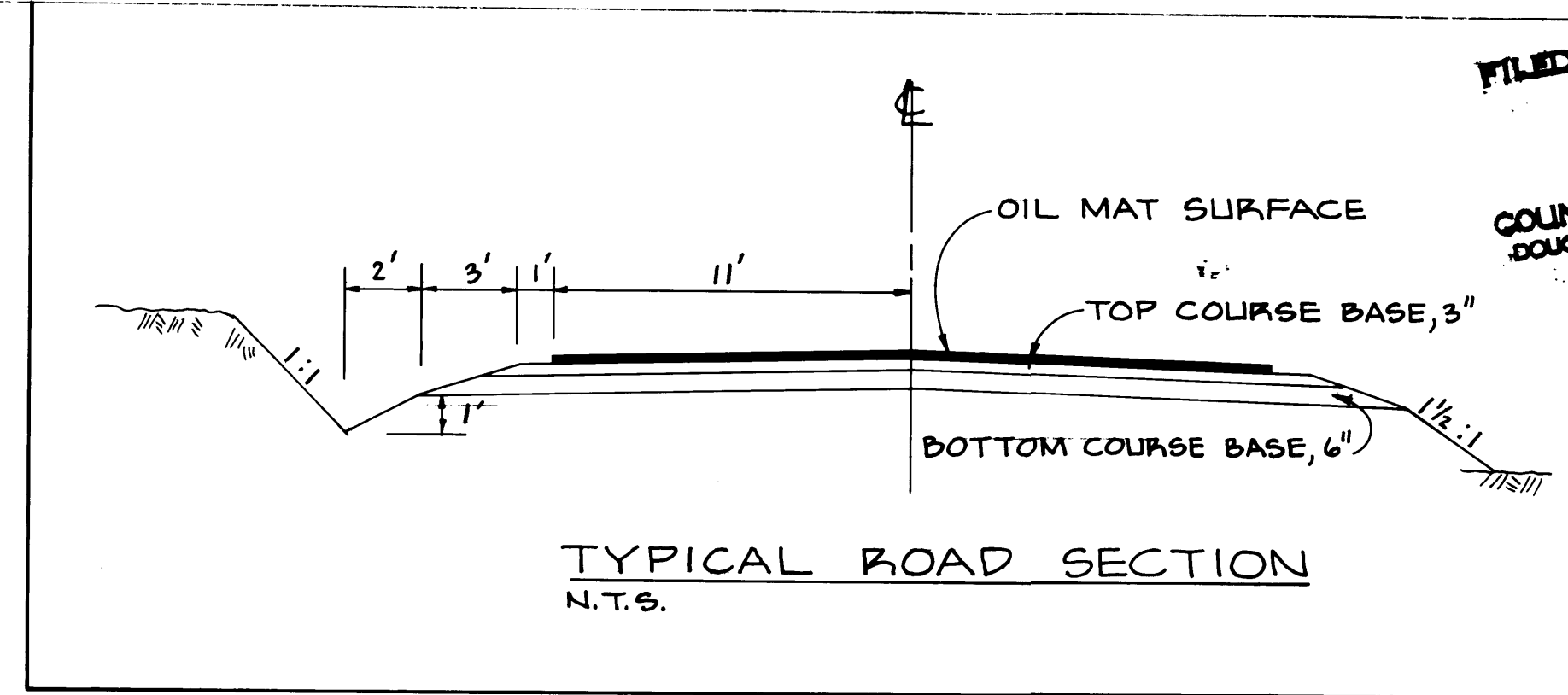


FILED
AUG 10 1987
COUNTY SURVEYOR
DOUGLAS COUNTY, ORE.



PLAN



GENERAL NOTES

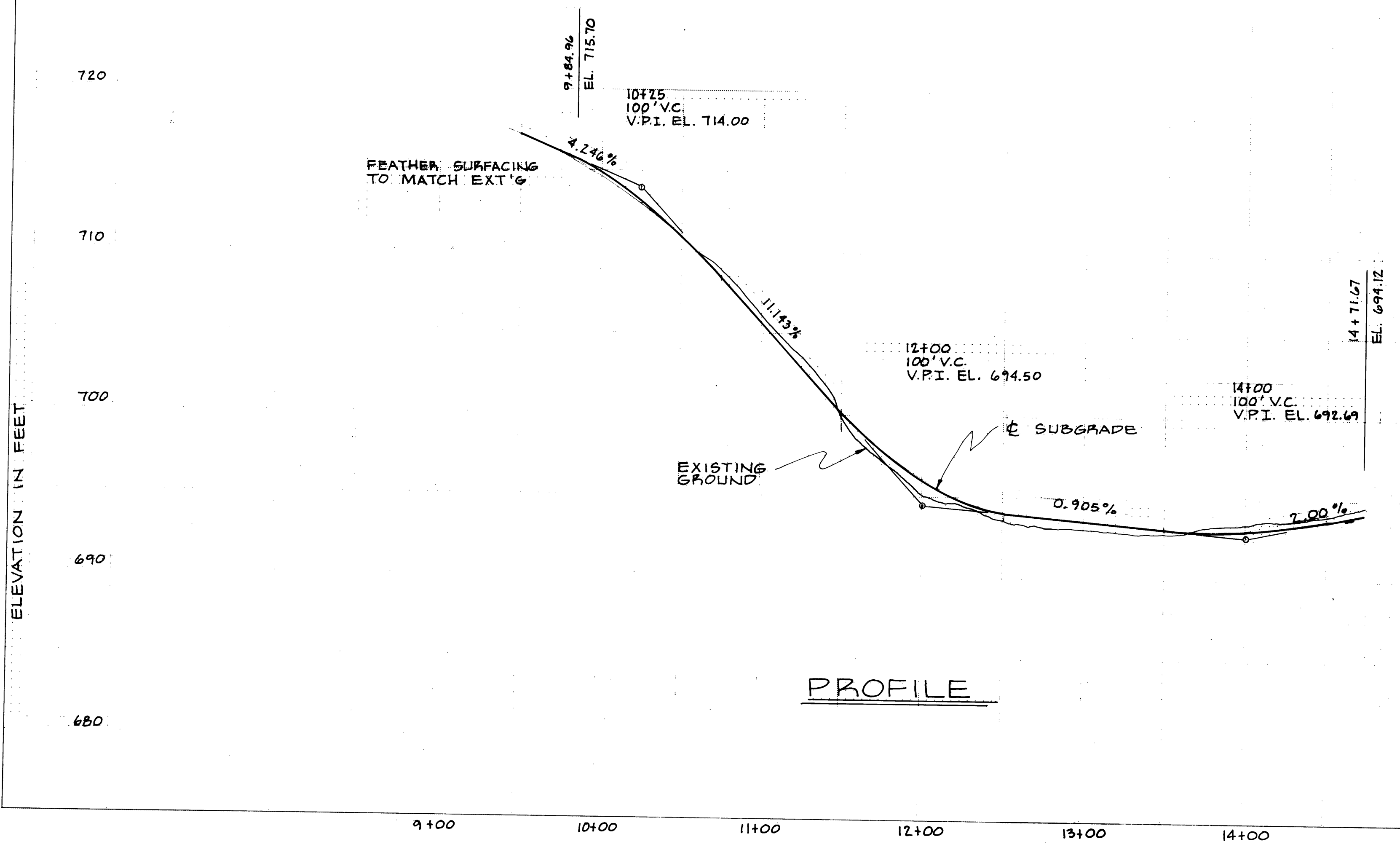
REINFORCING STEEL : A.S.T.M. A-615 INTERMEDIATE GRADE & A.S.T.M. A-305, HIGH BOND

CONCRETE : ULTIMATE STRENGTH OF 3300 P.S.I. @ 28 DAYS

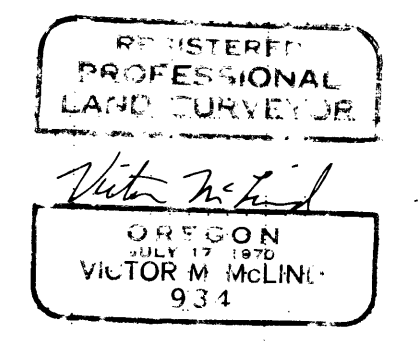
CURE : MOIST CURE OR CURE W/MEMBRANE COMPOUND

CAUTION : CONST. EQUIPMENT SHALL NOT BE OPERATED OVER UNPROTECTED PIPE & SHALL NOT BE OPERATED OVER SLAB UNTIL 14 DAYS AFTER POURING CONC.

DETAIL A



PROFILE



ARROW STREET & INDIAN LANE
H.L. BALL - C.E. VIC McLIND - L.S.
ROAD PLANS
MARCH, 1977