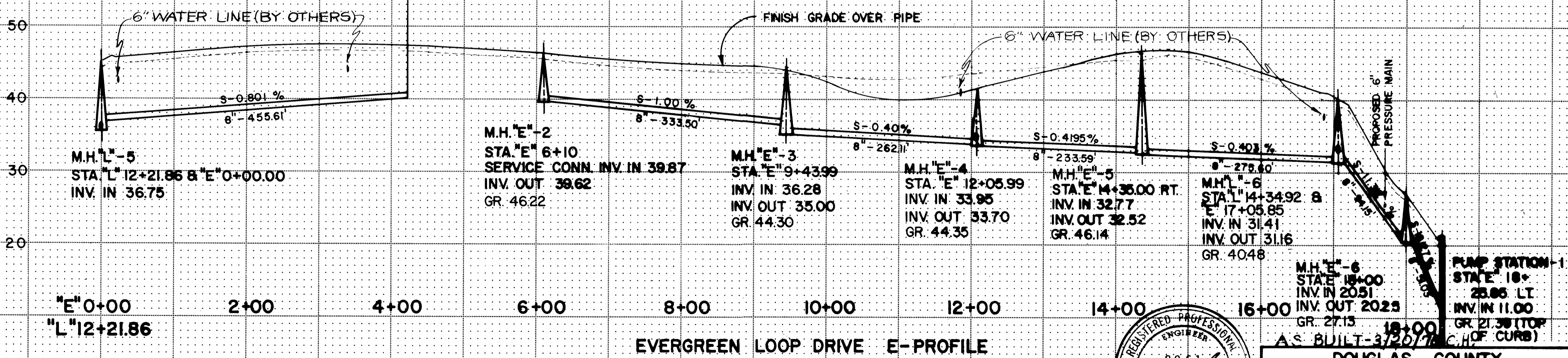
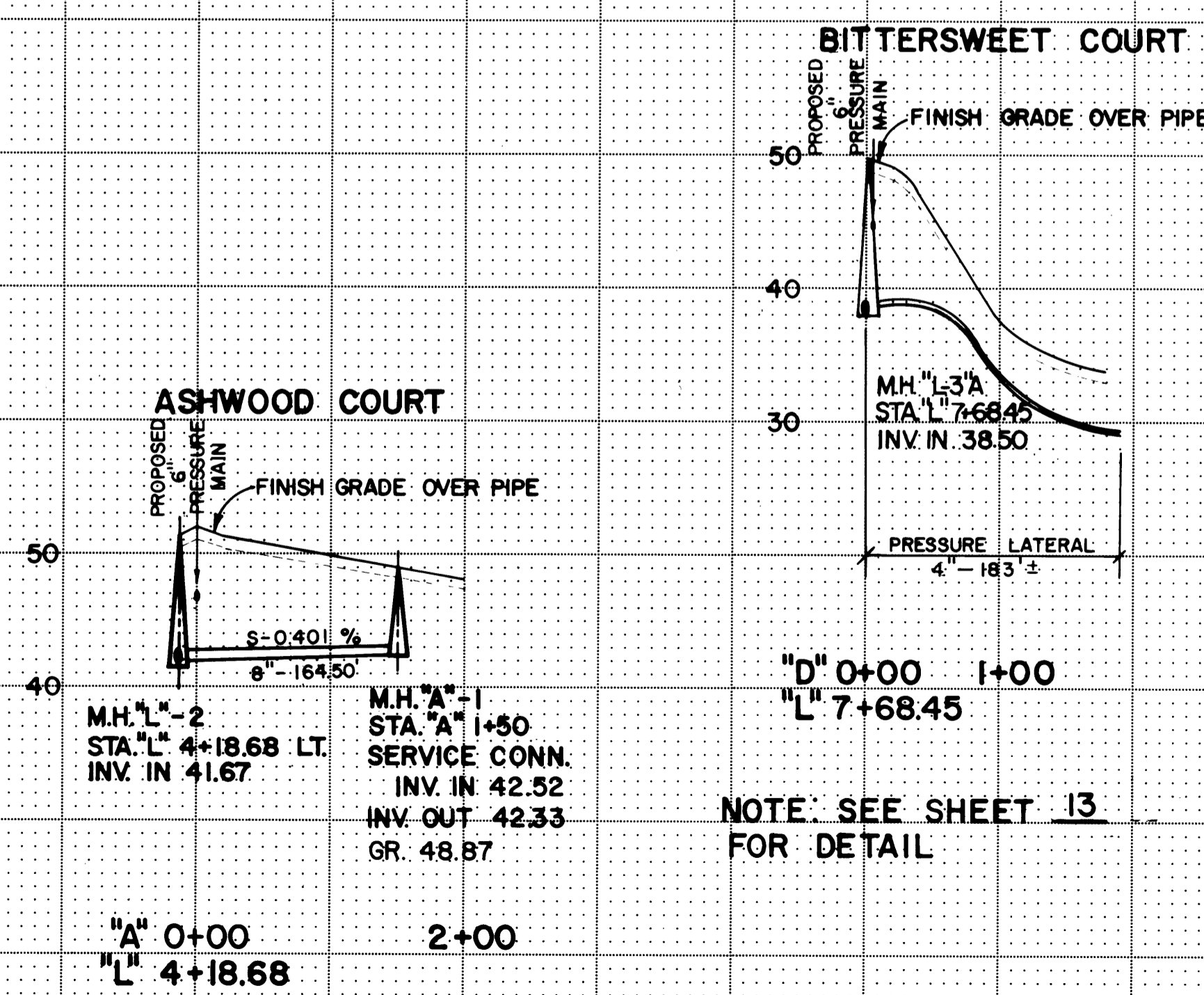
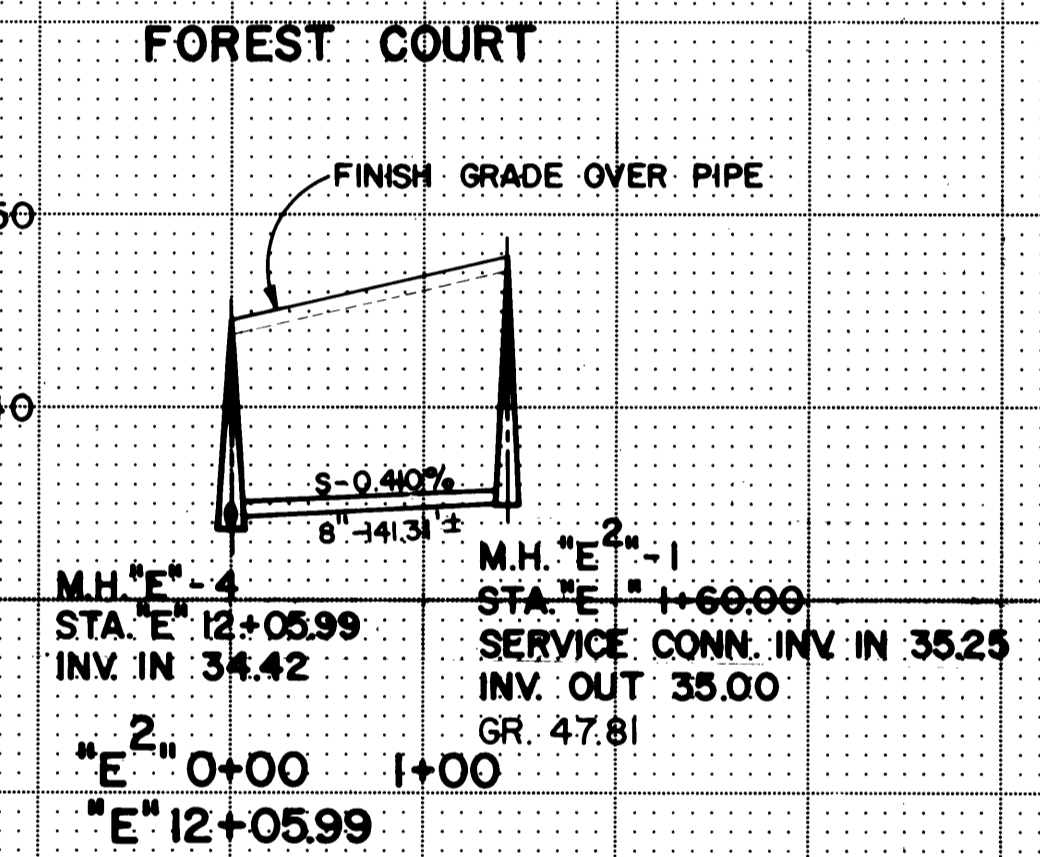
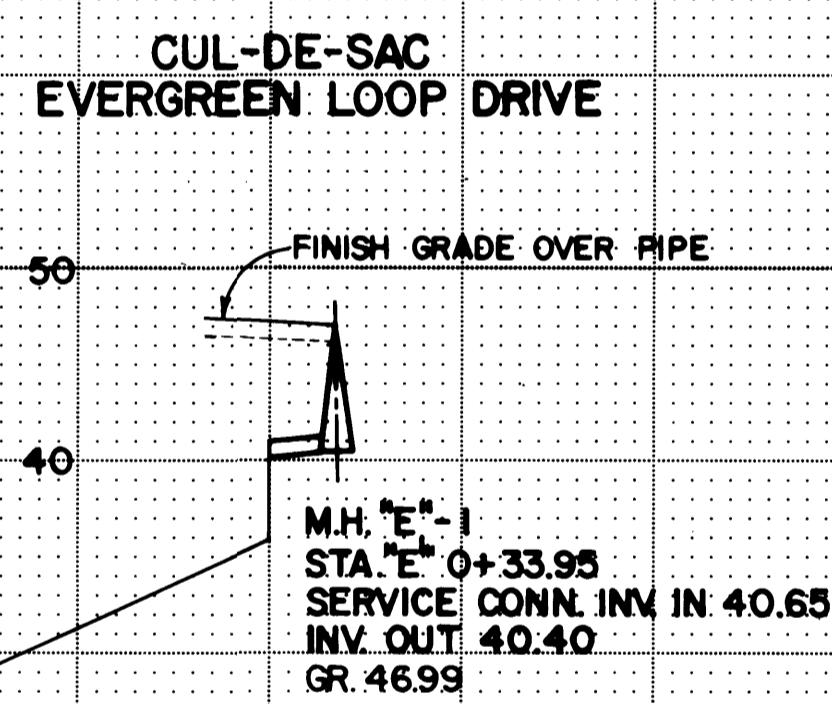
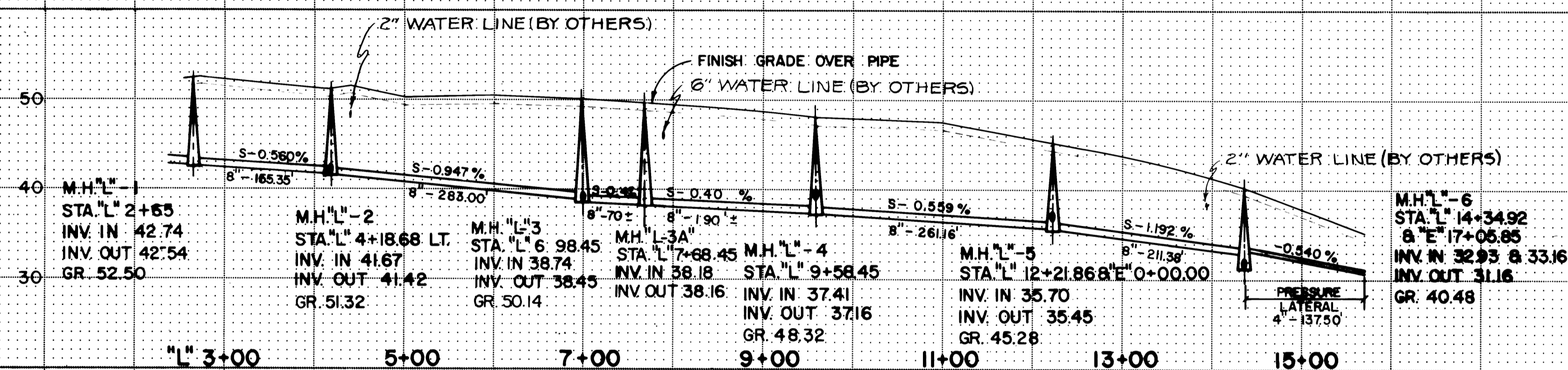
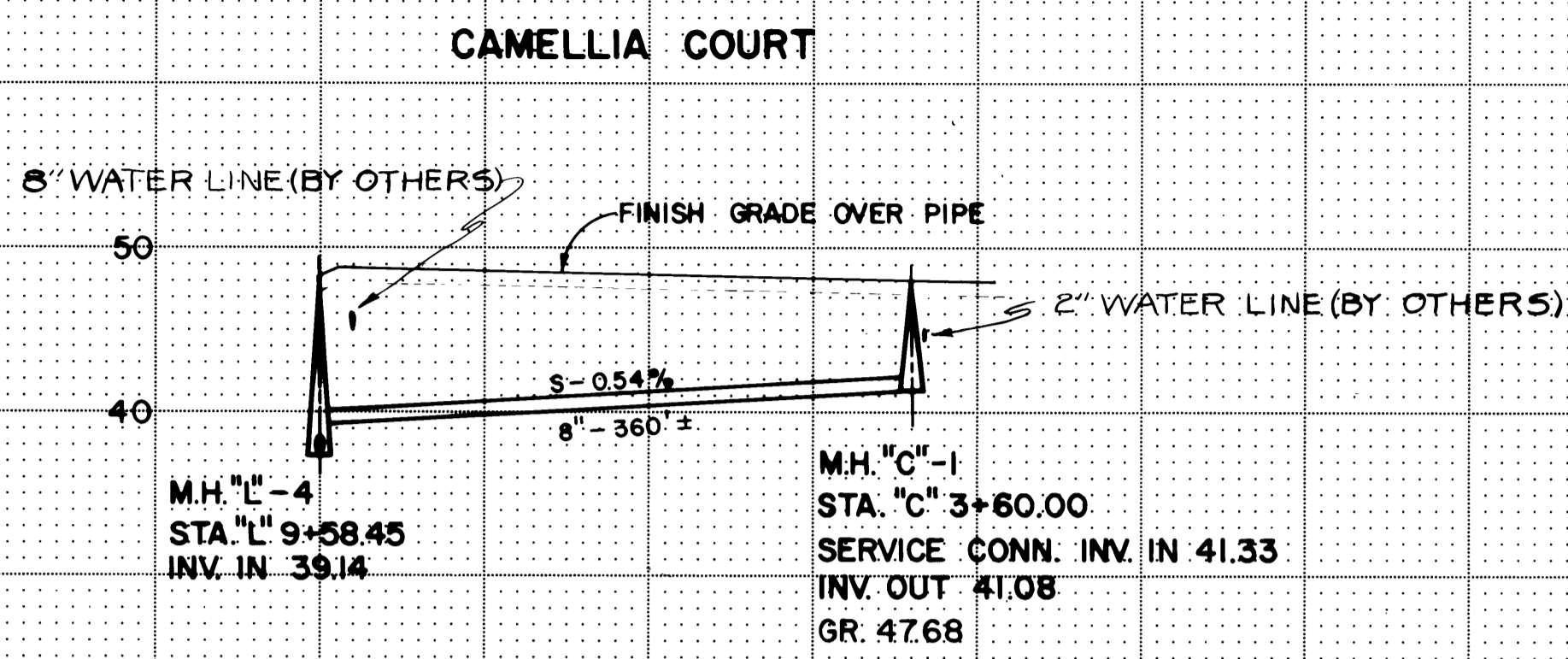
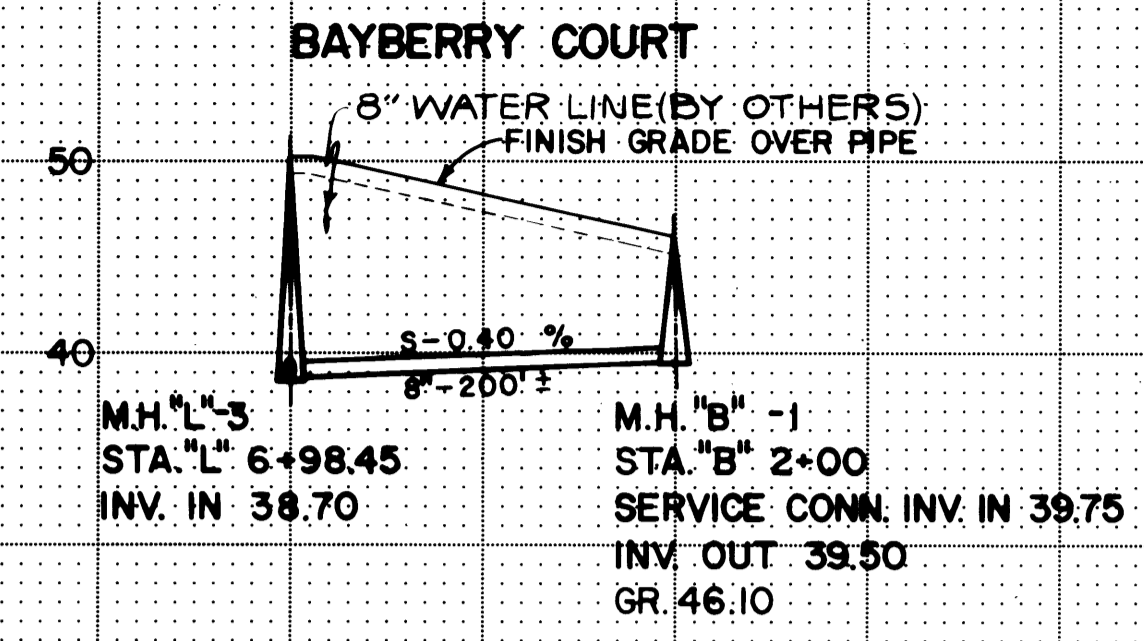
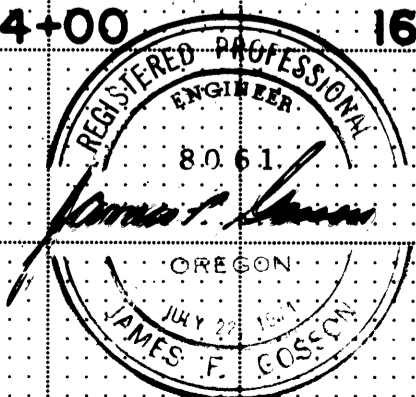


FILED
RECEIVED
JUN 26 1976
COUNTY SURVEYOR
DOUGLAS COUNTY, ORE.



NOTE: SEE SHEET 13 FOR DETAIL



DOUGLAS COUNTY
PUBLIC WORKS DEPARTMENT
FERN ACRES SUBDIVISION
1976
SHT. 10
GEORGE E. GRUBB, DIRECTOR