

SEC. 33 T 21 S R 12 W W.M.

FILED  
RECEIVED  
JUN 26 1978  
COUNTY SURVEYOR  
DOUGLAS COUNTY, ORE.

NOTE:  
TYPE "A" LATERAL INDICATED BY  
A SOLID LINE (—).

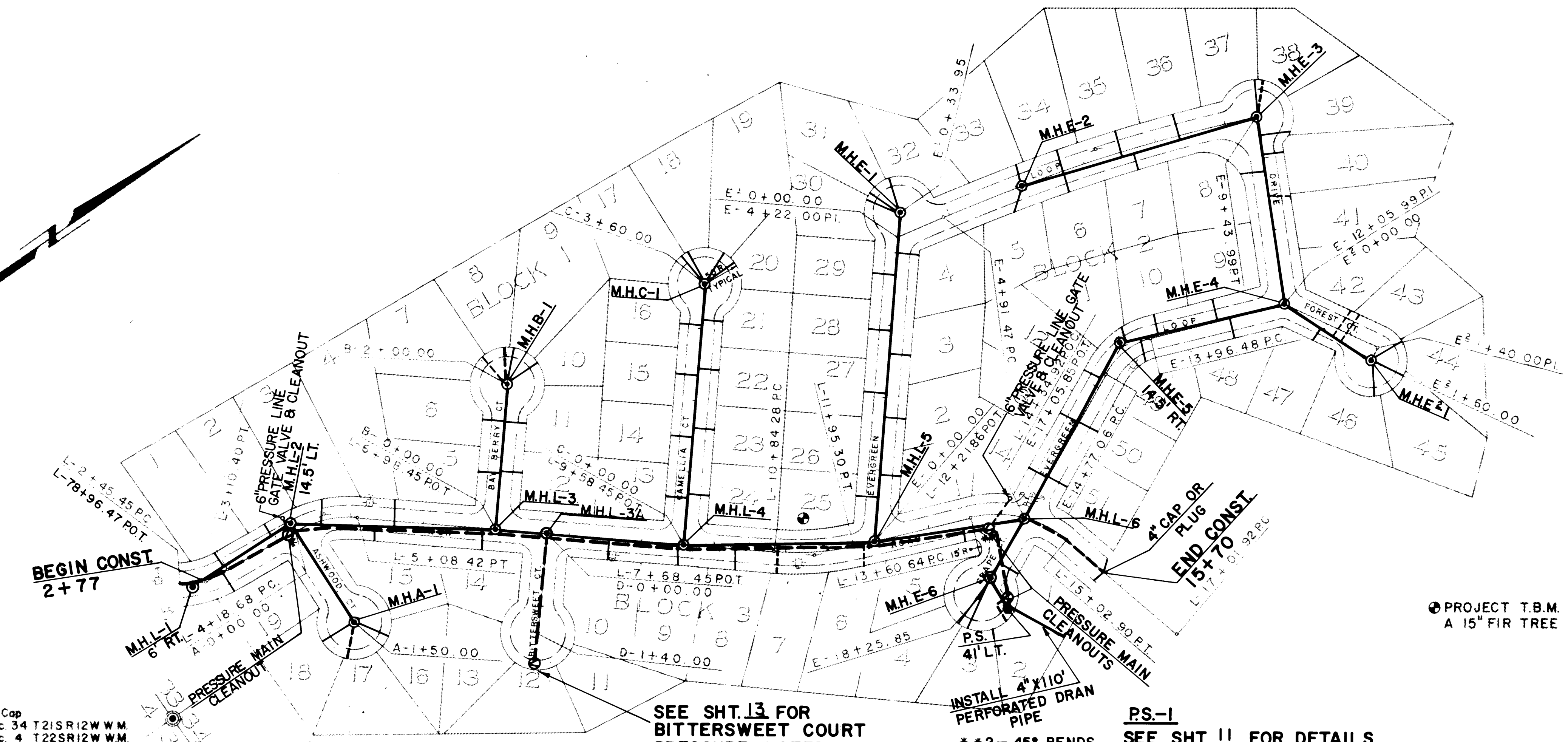
TYPE "B" LATERAL INDICATED BY  
A DASHED LINE (---).

NOTE  
ALL MANHOLES STANDARD TYPE A  
SEE SHT. 13 FOR PRESSURE MAIN  
CLEANOUT DETAIL

CONST. 7.1 TYPE "A" SERVICE CONNECTIONS AS  
DIRECTED BY ENGINEER WITHIN SUBDIVISION

CONST. 10 TYPE "B" SERVICE CONNECTIONS, DENOTED  
BY(---), AS DIRECTED BY ENGINEER WITHIN  
SUBDIVISION.

Fd Brass Cap  
Sec 33 Sec 34 T21S R12W W.M.  
Sec 3 Sec 4 T22S R12W W.M.  
N 47, 027.17  
E 11, 217.13



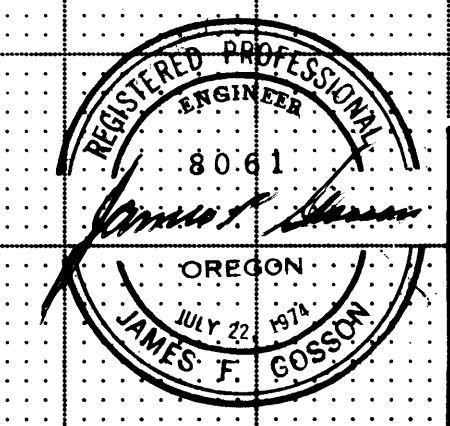
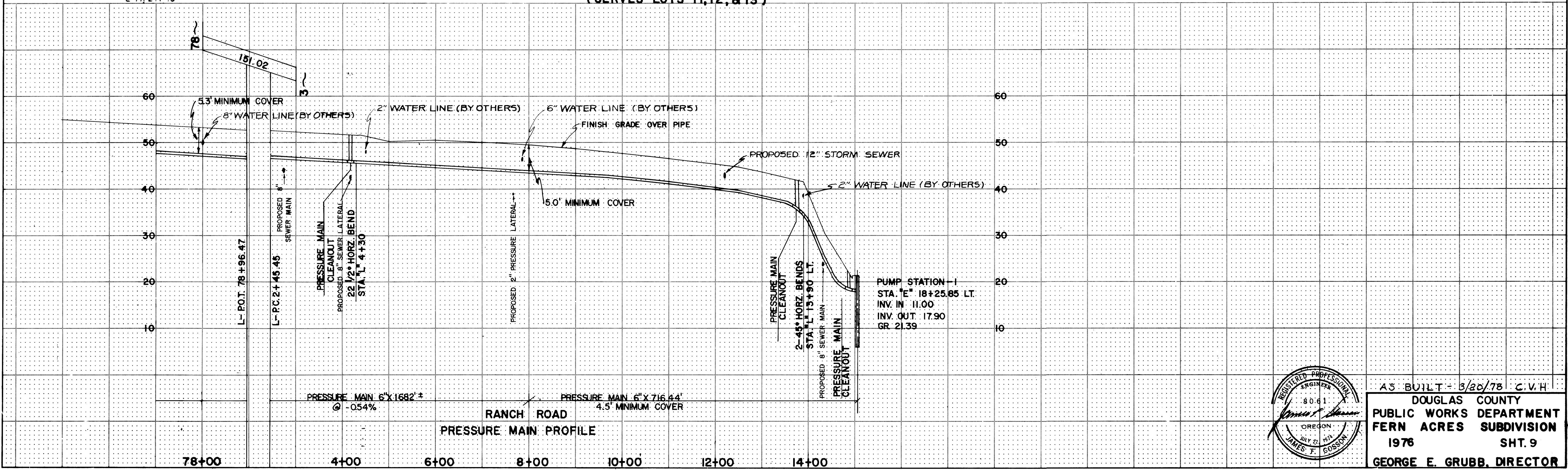
SEE SHT. 13 FOR  
BITTERSWEET COURT  
PRESSURE LATERAL DETAIL  
(SERVES LOTS 11, 12, & 13)

INSTALL 4" X 110'  
PERFORATED DRAN  
PIPE

PS-1  
SEE SHT. 11 FOR DETAILS

\* 22 1/2° BEND

\* 2- 45° BENDS



AS BUILT - 6/20/78 C.V.H.  
DOUGLAS COUNTY  
PUBLIC WORKS DEPARTMENT  
FERN ACRES SUBDIVISION  
1978 SHT. 9  
GEORGE E. GRUBB, DIRECTOR