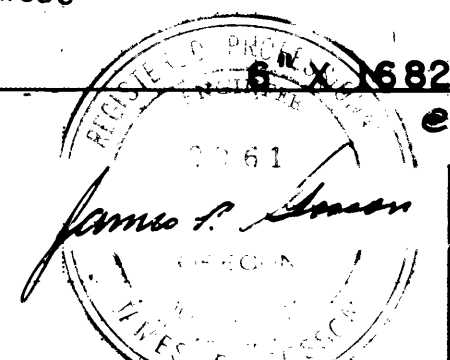
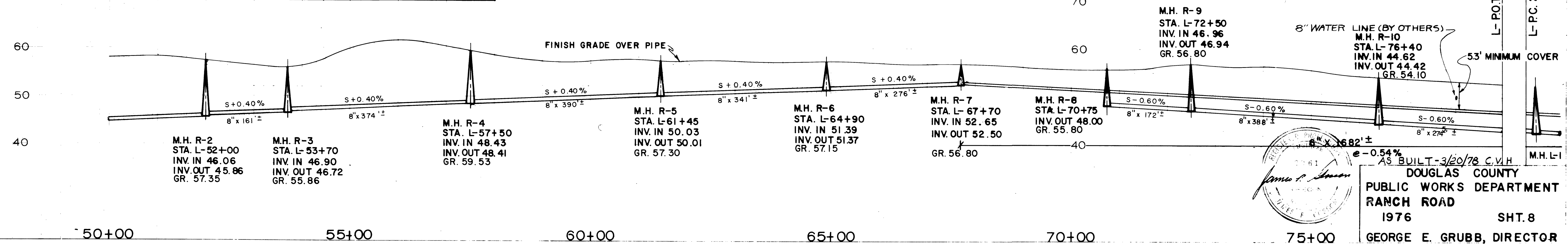
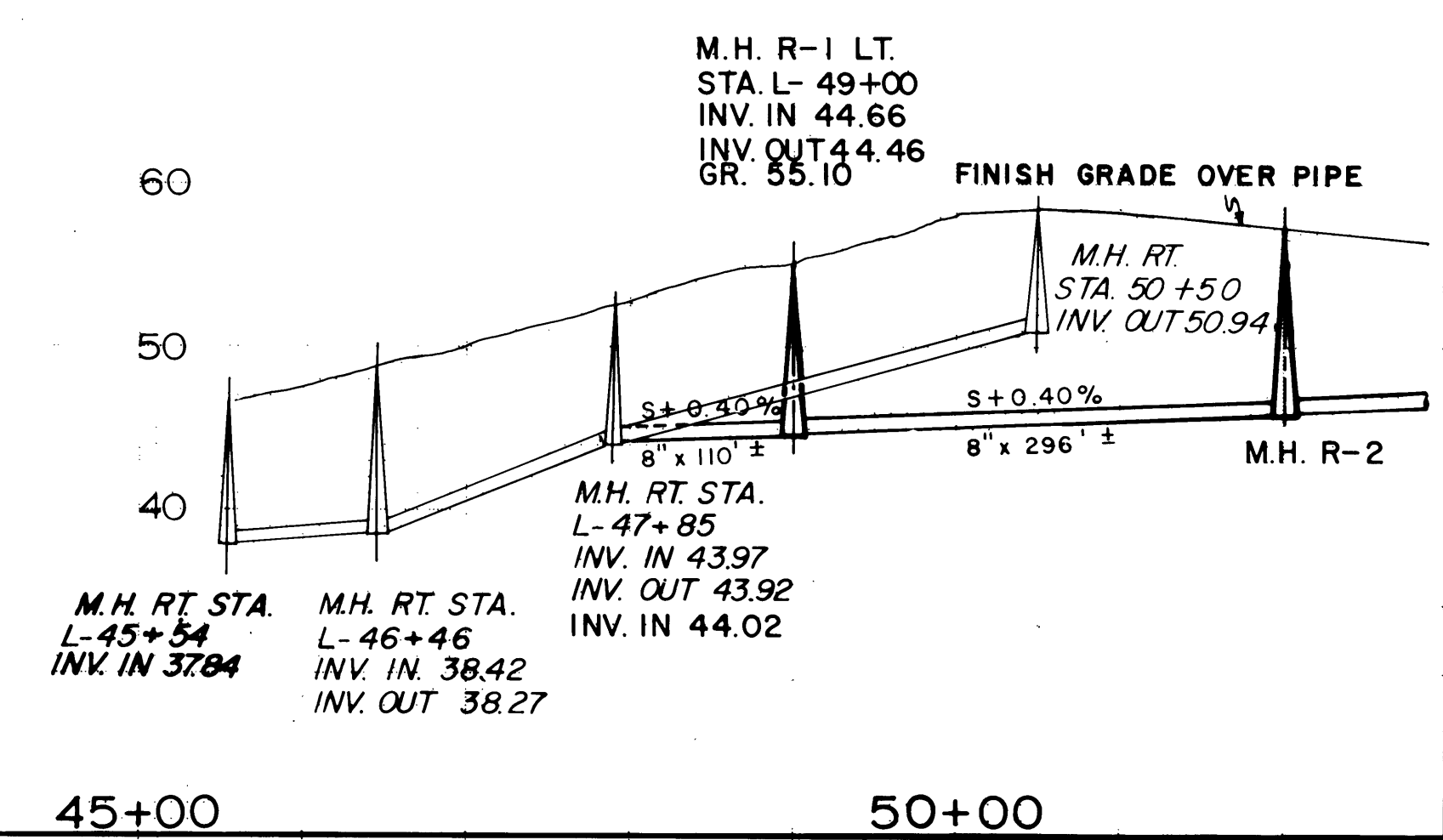
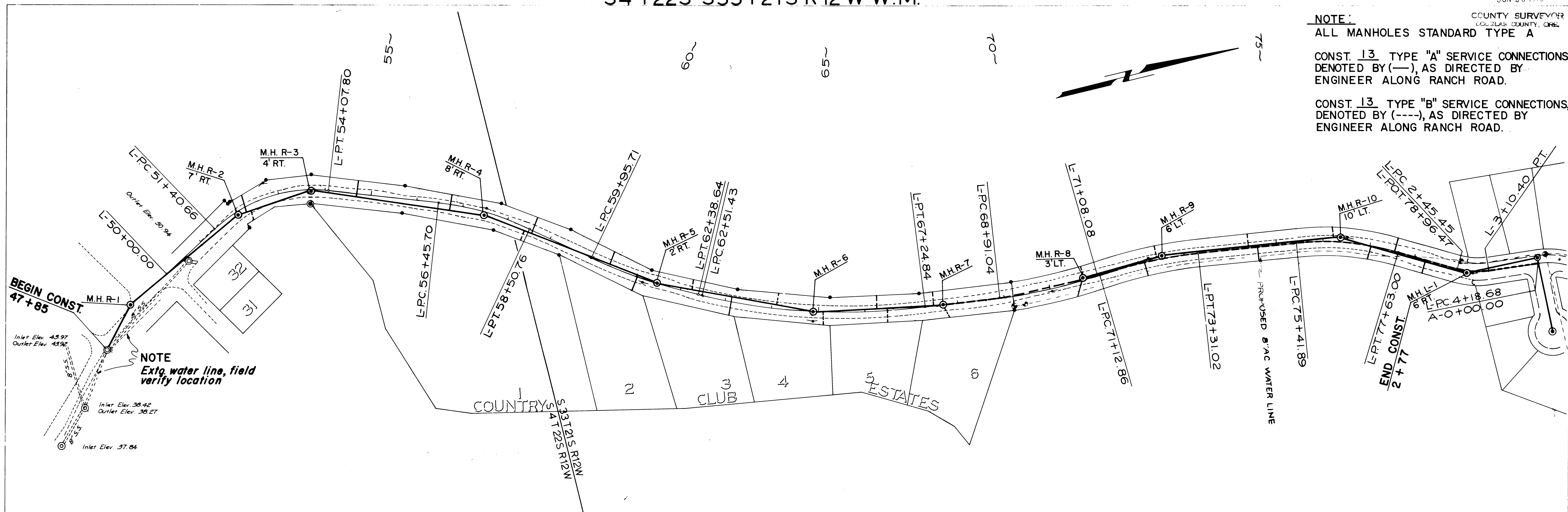


S4 T22S S33 T21S R12 W W.M.

FILED  
RECEIVED  
JUN 26 1978  
COUNTY SURVEYOR  
DOUGLAS COUNTY, ORE.

**NOTE:**  
ALL MANHOLES STANDARD TYPE "A"  
CONST. 13 TYPE "A" SERVICE CONNECTIONS, DENOTED BY (—), AS DIRECTED BY ENGINEER ALONG RANCH ROAD.  
CONST. 13 TYPE "B" SERVICE CONNECTIONS, DENOTED BY (----), AS DIRECTED BY ENGINEER ALONG RANCH ROAD.

DATE	
BY	
NO.	
PLAN	
REVISIONS	
NO.	
DATE	
BY	
NO.	
PROFILE	
REVISIONS	
NO.	
DATE	
BY	
NO.	



AS BUILT-3/20/78 C.V.H.  
DOUGLAS COUNTY  
PUBLIC WORKS DEPARTMENT  
RANCH ROAD  
1976  
SHT. 8  
GEORGE E. GRUBB, DIRECTOR