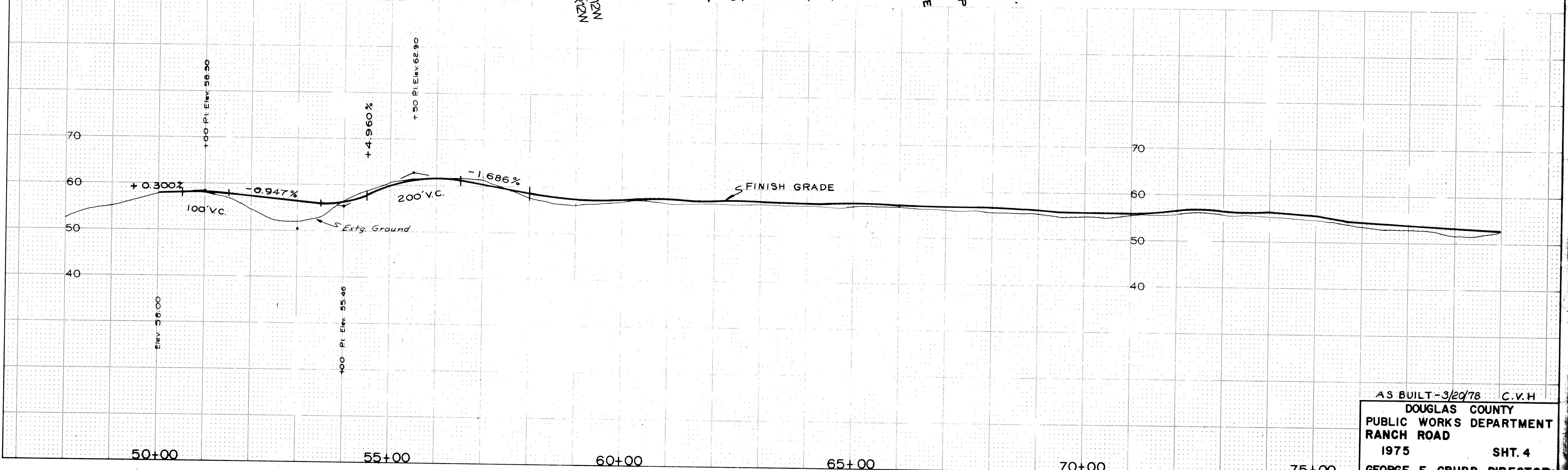
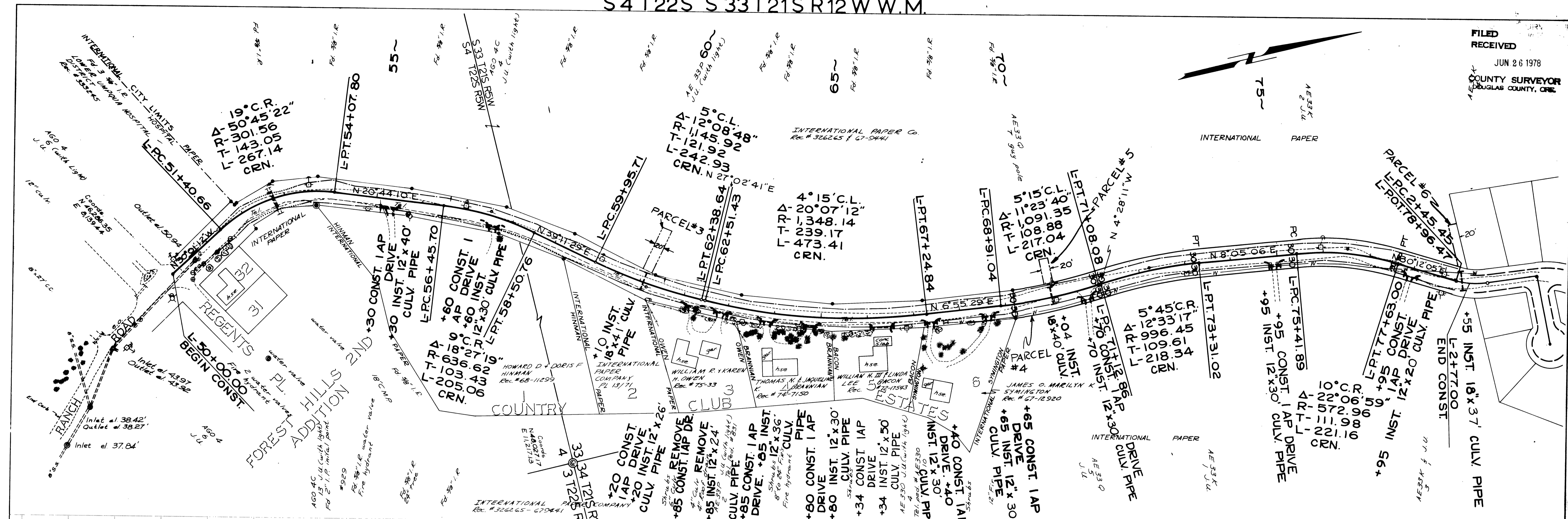


S 4 T 22 S S 33 T 21 S R 12 W W.M.

FILED  
RECEIVED  
JUN 26 1978  
COUNTY SURVEYOR  
DOUGLAS COUNTY, ORE



AS BUILT-3/29/78 C.V.H.  
DOUGLAS COUNTY  
PUBLIC WORKS DEPARTMENT  
RANCH ROAD  
1975 SHT. 4  
GEORGE E. GRUBB, DIRECTOR