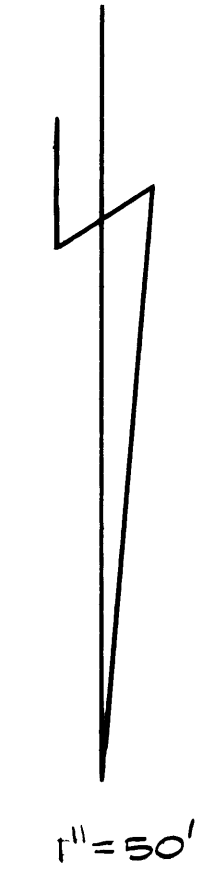
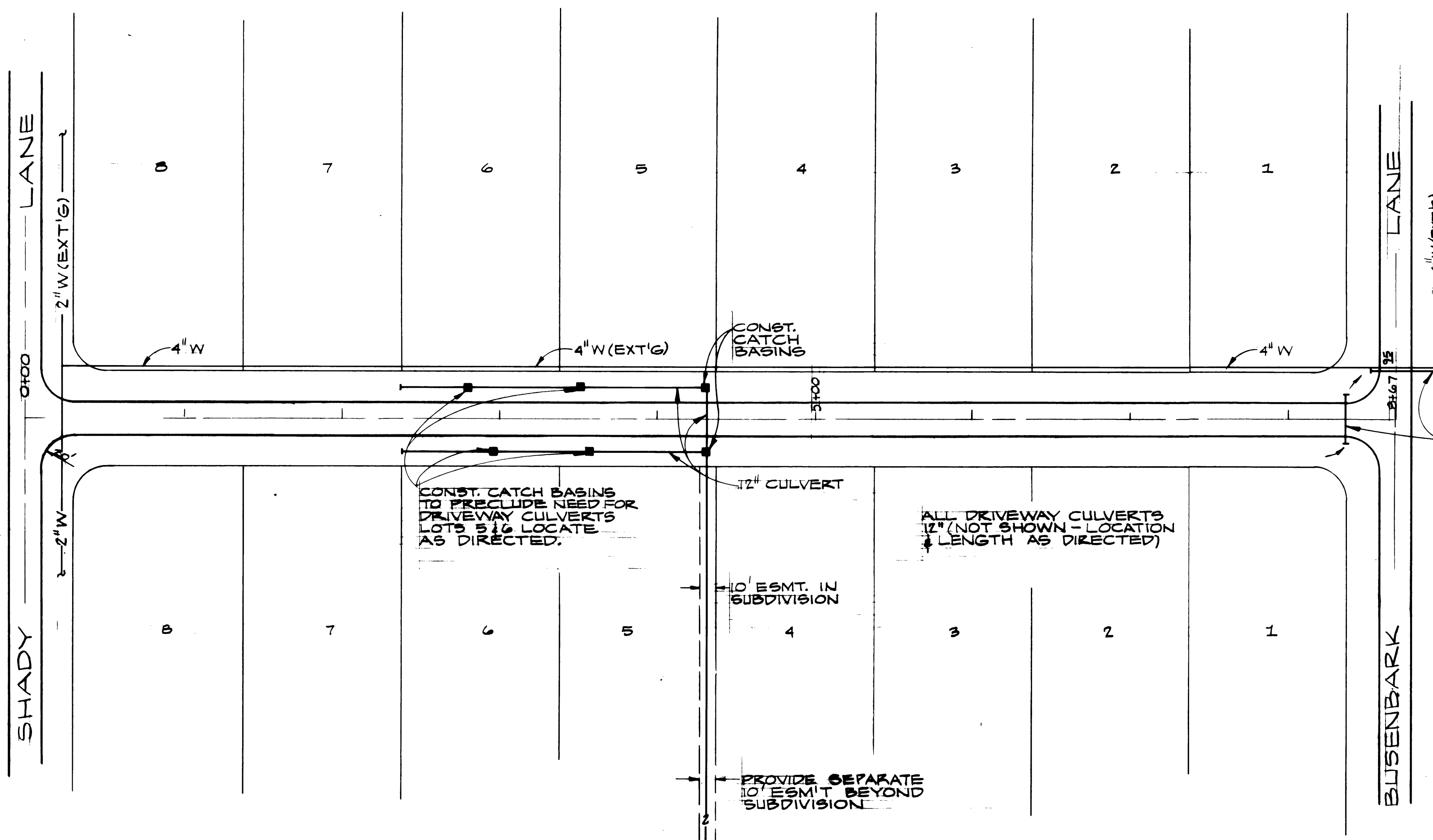


NOTE:
1. PROJECT B.M. BRIDGE SPIKE IN ANCHOR POST @ S.E. CORNER OF INTERSECTION CONN. 16 FORD & OLD MELROSE RD. EL. 406.04
2. OBTAIN APPROVAL FROM DOUGLAS COUNTY PUBLIC WORKS DEPARTMENT PRIOR TO CONSTRUCTION.

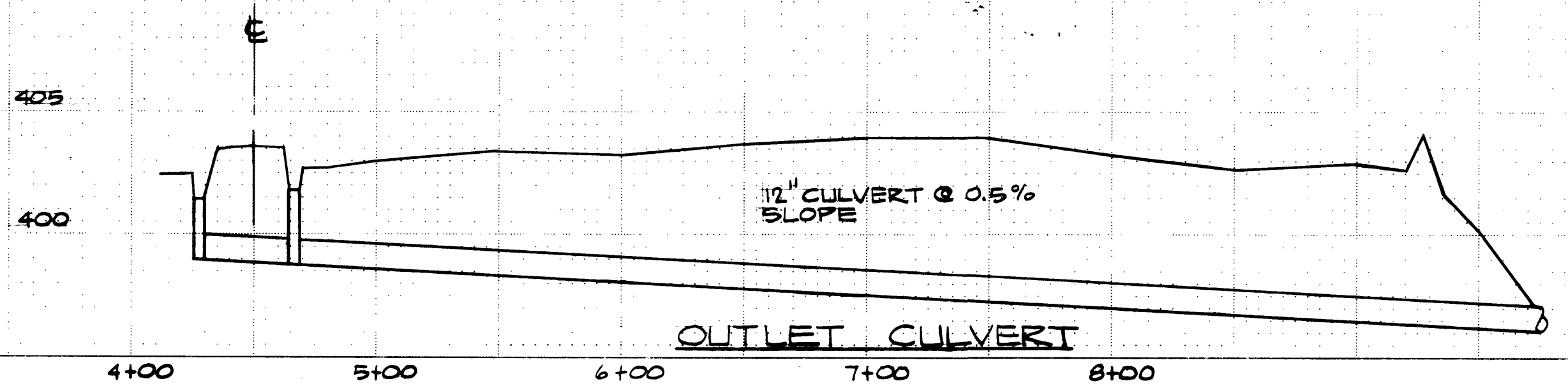
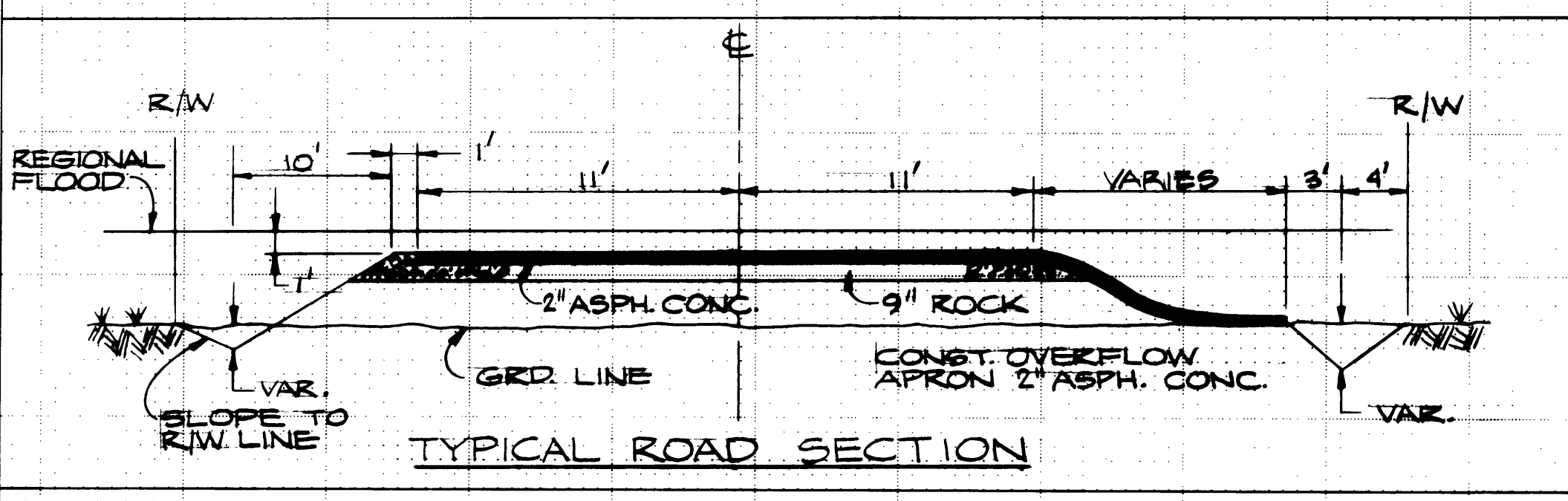
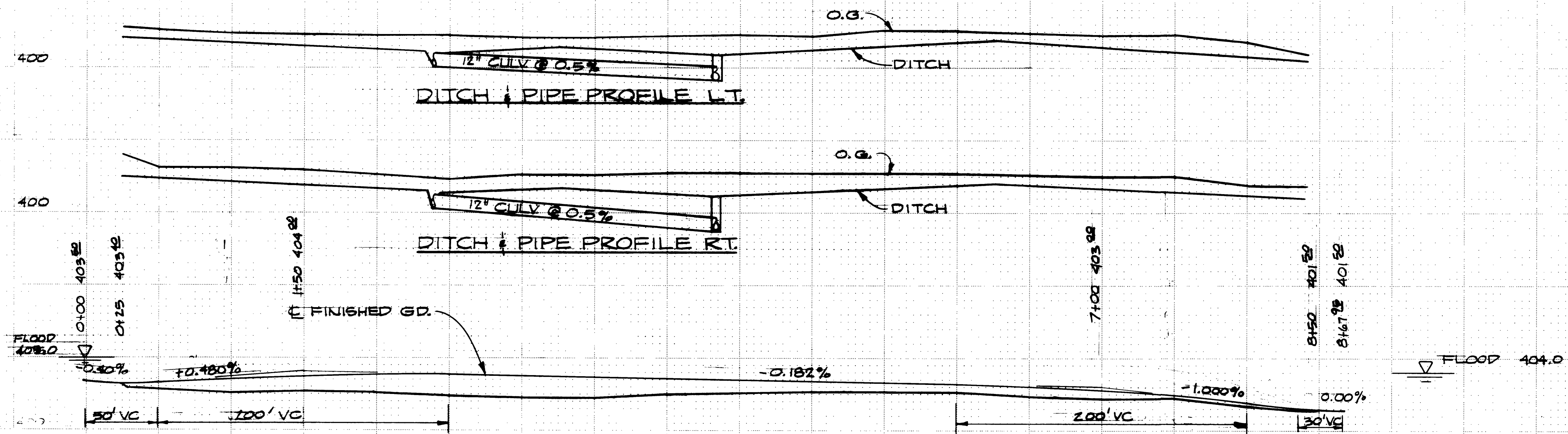
VICINITY MAP



FILED
RECEIVED
APR 12 1976
COUNTY SURVEYOR
DOUGLAS COUNTY, OR

QUANTITY SUMMARY (APPROX.)

DITCH EXCAVATION	300 CU. YDS
TRENCH EXCAVATION	400 CU. YDS
EMBANKMENT	
CRUSHED ROCK	875 CU. YDS
A.C. PAVEMENT	350 TONS
12" CULVERT	1,020 LIN. FT. (PLUS DRIVEWAY CULV. NOT SHOWN)
CATCH BASINS	6 EACH



REVISED GRADE 6-2-76
CAMINO FRANCISCO WILLOW RANCH ... FIRST ADD.
DECEMBER, 1975
FRANK GUIDO, DEVELOPER
H.L. BALL, CIVIL ENGINEER