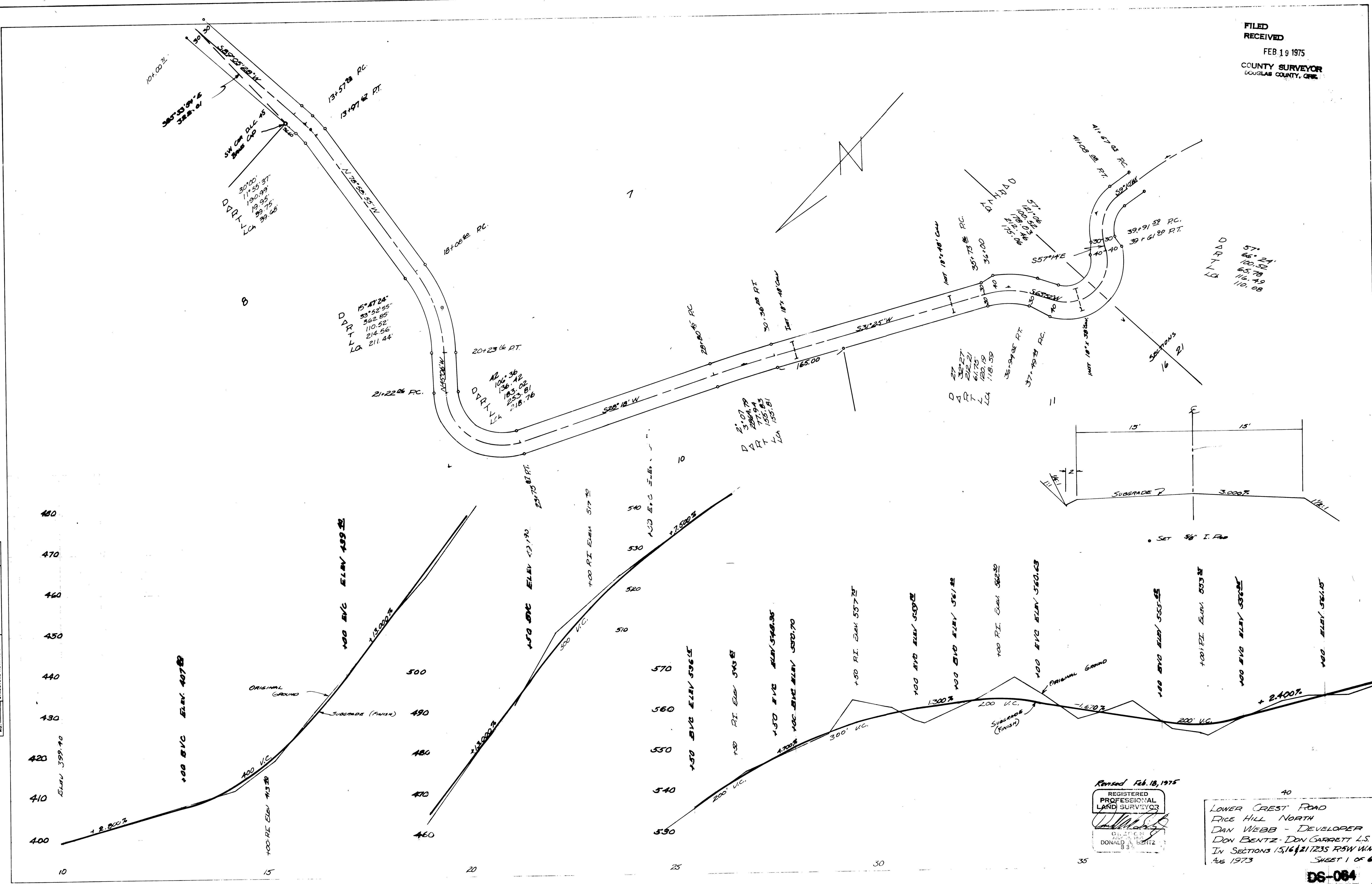


FILED
RECEIVED
FEB 19 1975
COUNTY SURVEYOR
DOUGLAS COUNTY, OKLA.

PLAN	DATE	BY
NO.		
NO. OF PARTS		
ALIGNED NUMBER		
PROJECT		

PROFILE	DATE	BY
NO.		
NO. OF PARTS		
ALIGNED NUMBER		
PROJECT		



Revised Feb. 18, 1975
REGISTERED
PROFESSIONAL
LAND SURVEYOR
DONALD A. BENTZ

40
LOWER CREST ROAD
RICE HILL NORTH
DAN WEBB - DEVELOPER
DON BENTZ - DON GARRETT L.S.'s
IN SECTIONS 15, 16 & 21 T23S R5W W.M.
AUG 1973
SHEET 1 OF 6

DS-084