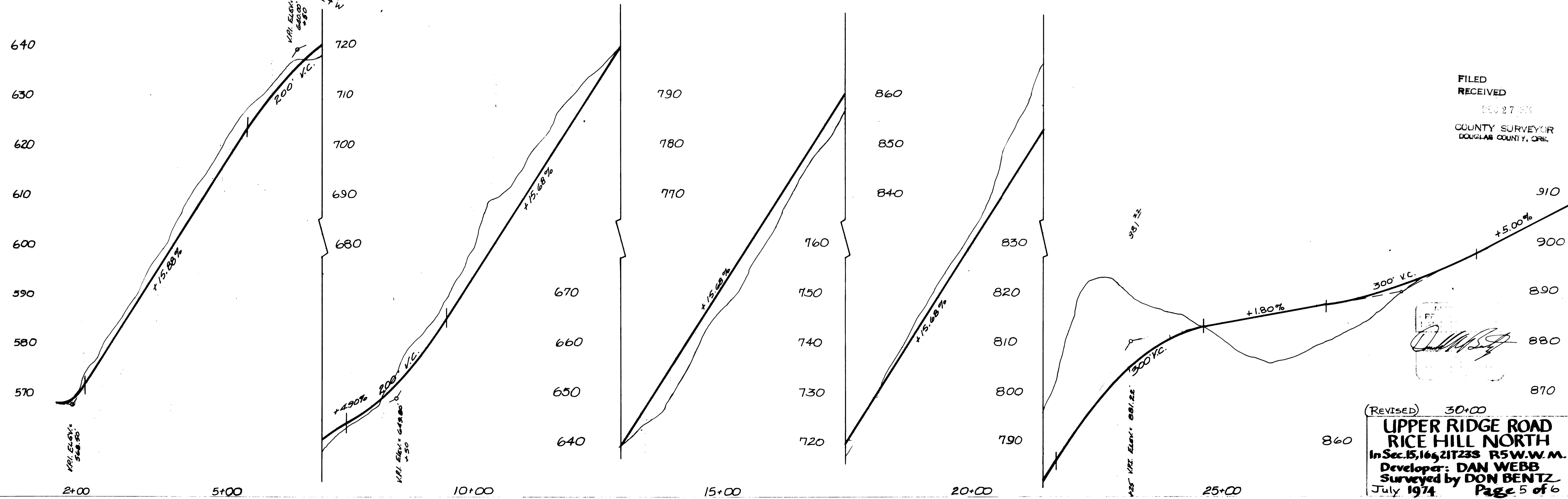
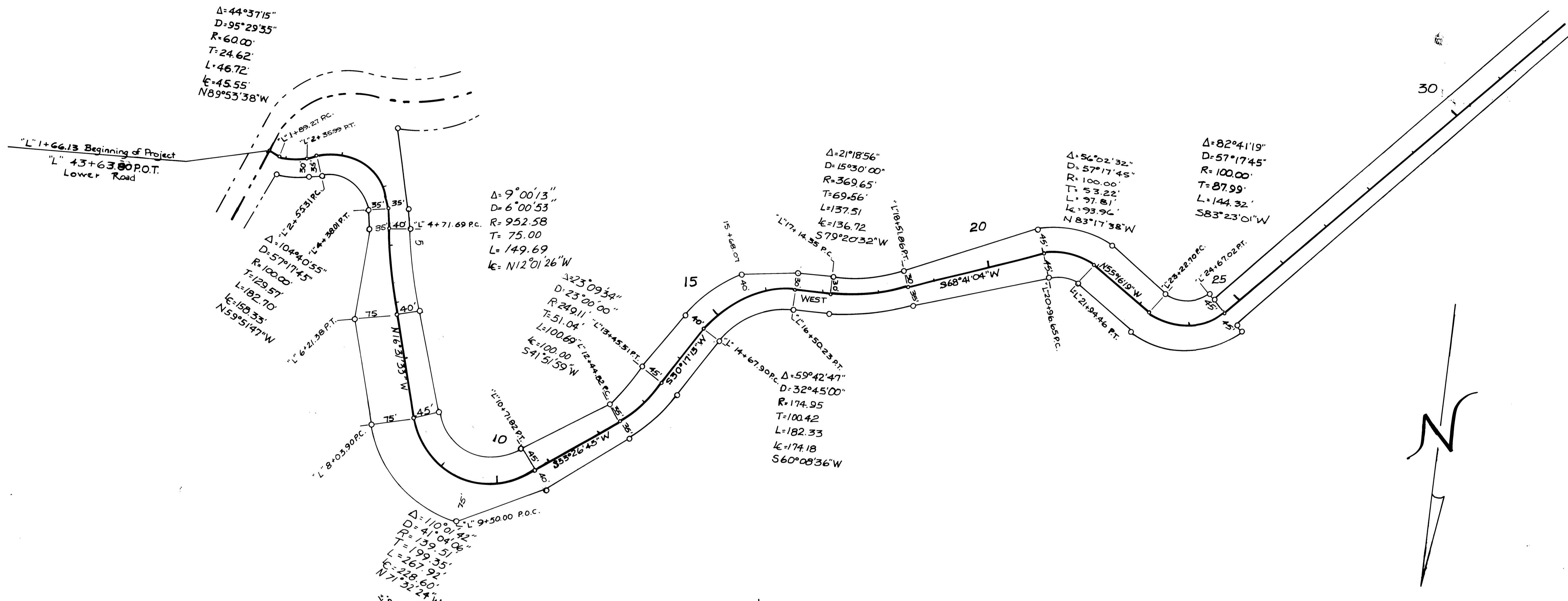


DATE	
BY	
SURVEYED	
ADJUSTMENT CHECKED	
NOTE BOOK	
RT. OF WAY CHECKED	
NO.	

DATE	
BY	
SURVEYED	
ADJUSTMENT CHECKED	
NOTE BOOK	
RT. OF WAY CHECKED	
NO.	



FILED  
RECEIVED  
2007  
COUNTY SURVEYOR  
DOUGLAS COUNTY, ORE.

(REVISED) 30+00  
**UPPER RIDGE ROAD  
RICE HILL NORTH**  
In Sec. 15, 16, 21, 23, R5W, W.M.  
Developer: DAN WEBB  
Surveyed by DON BENTZ  
July 1974 Page 5 of 6