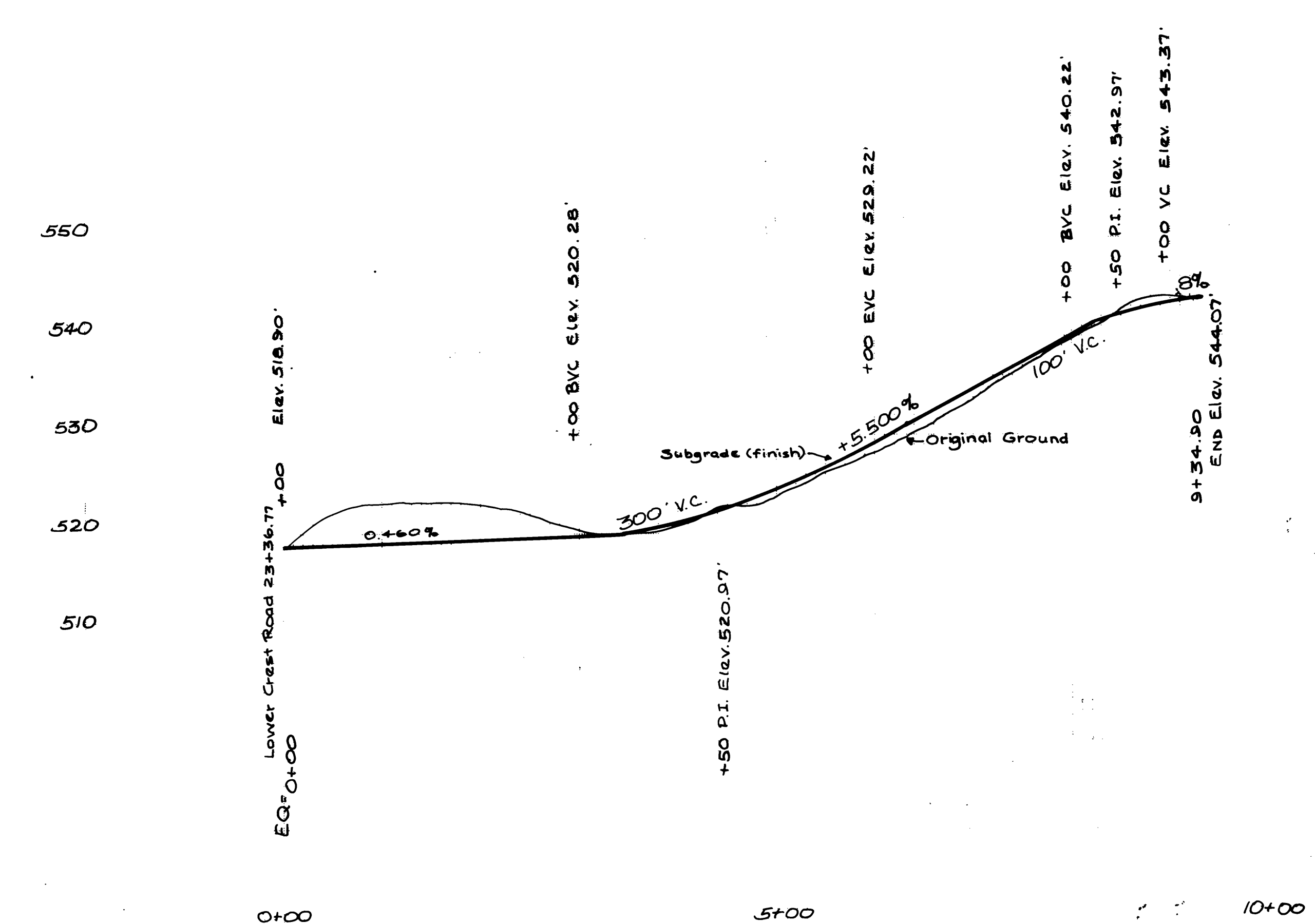
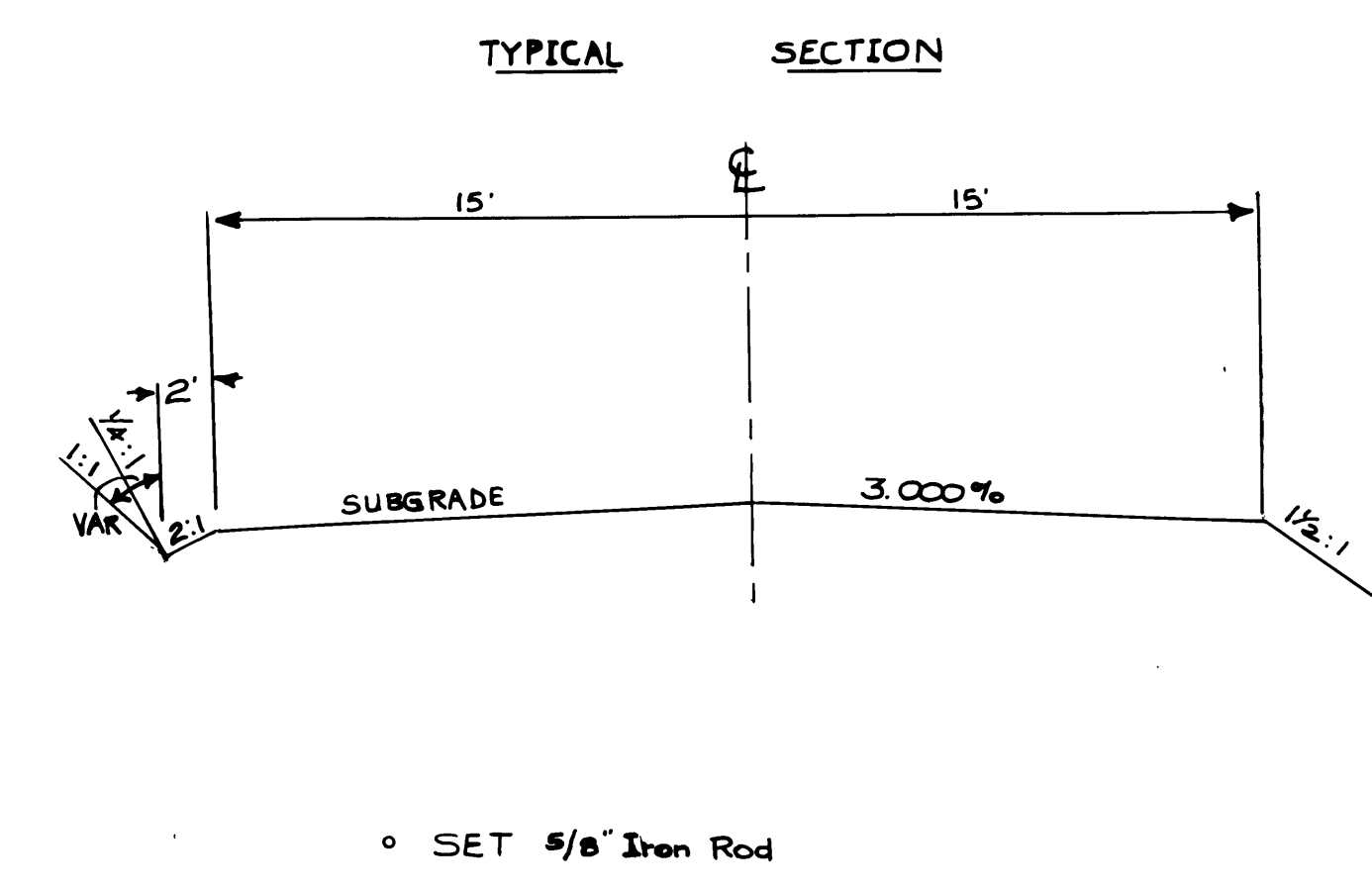
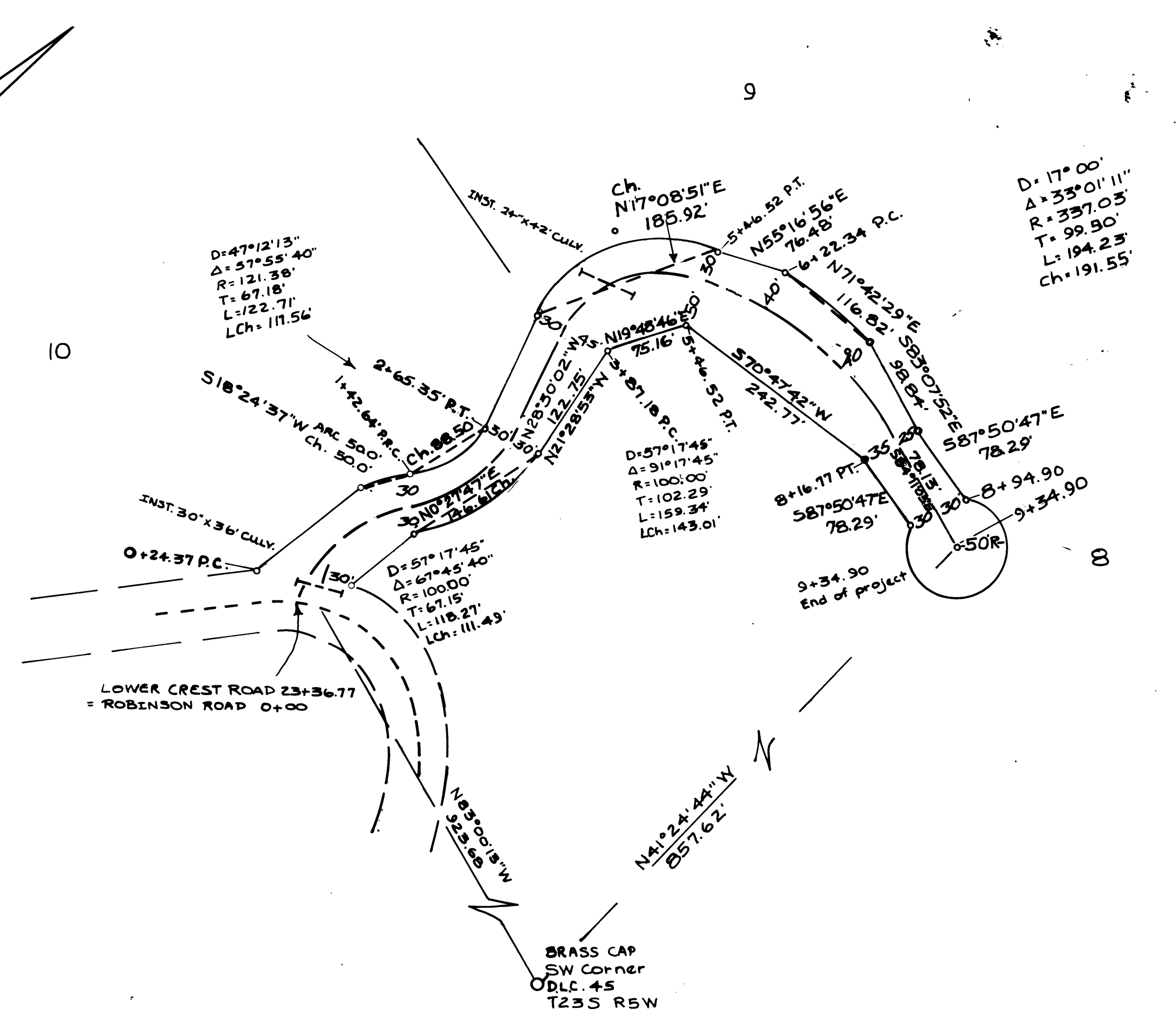
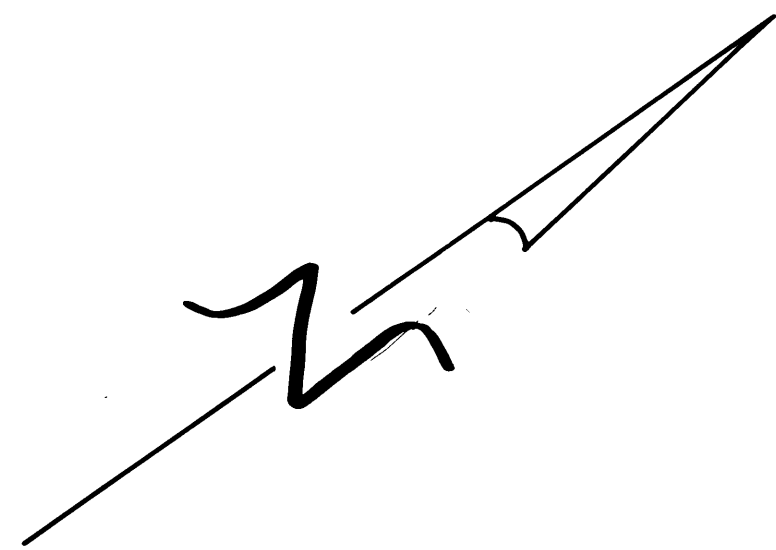


DATE	
BY	
SURVEYED	
PLOTTED	
CHECKED	
BY	
NO.	

DATE	
BY	
SURVEYED	
PLOTTED	
CHECKED	
BY	
NO.	



FILED
RECEIVED
DEC 27 1974
COUNTY SURVEYOR
DOUGLAS COUNTY, OREG.

REGISTERED
PROFESSIONAL
LAND SURVEYOR
[Signature]
OREGON
DONALD A. BENTZ
855

(Revised July 1974)
ROBINSON ROAD A PORTION OF
RICE HILL NORTH
DAN WEBB - DEVELOPER
DON BENTZ - L.S.
IN SEC. 15, 16, 21, T235 R5W W.M.
July 1974 SHEET 4 OF 6

As Built