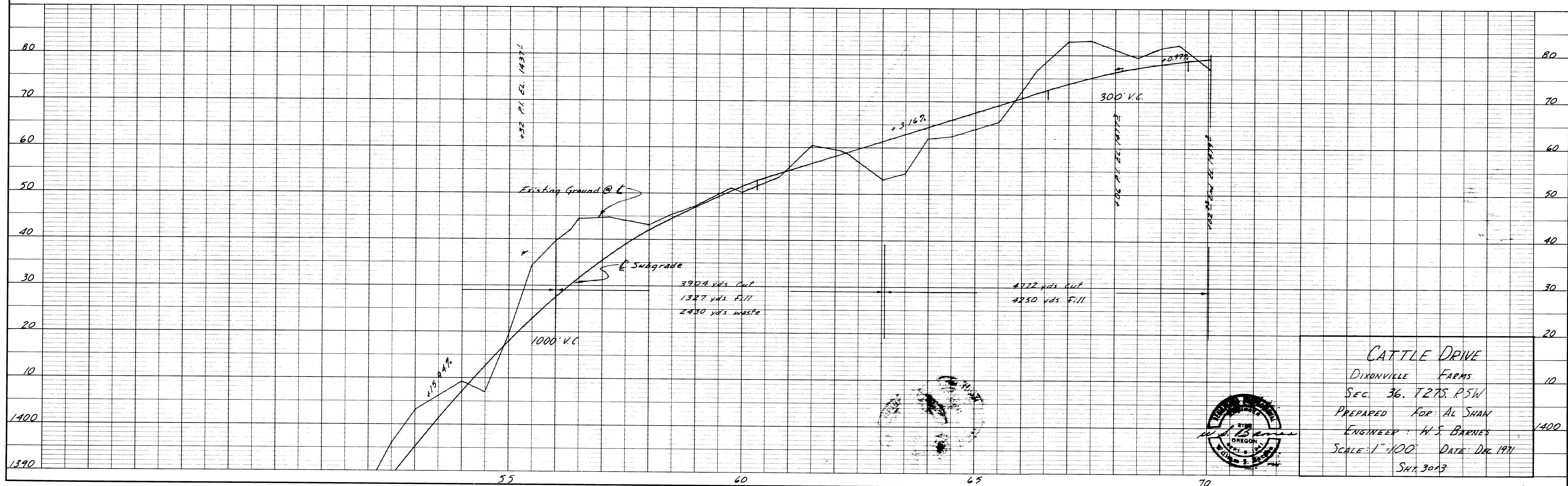
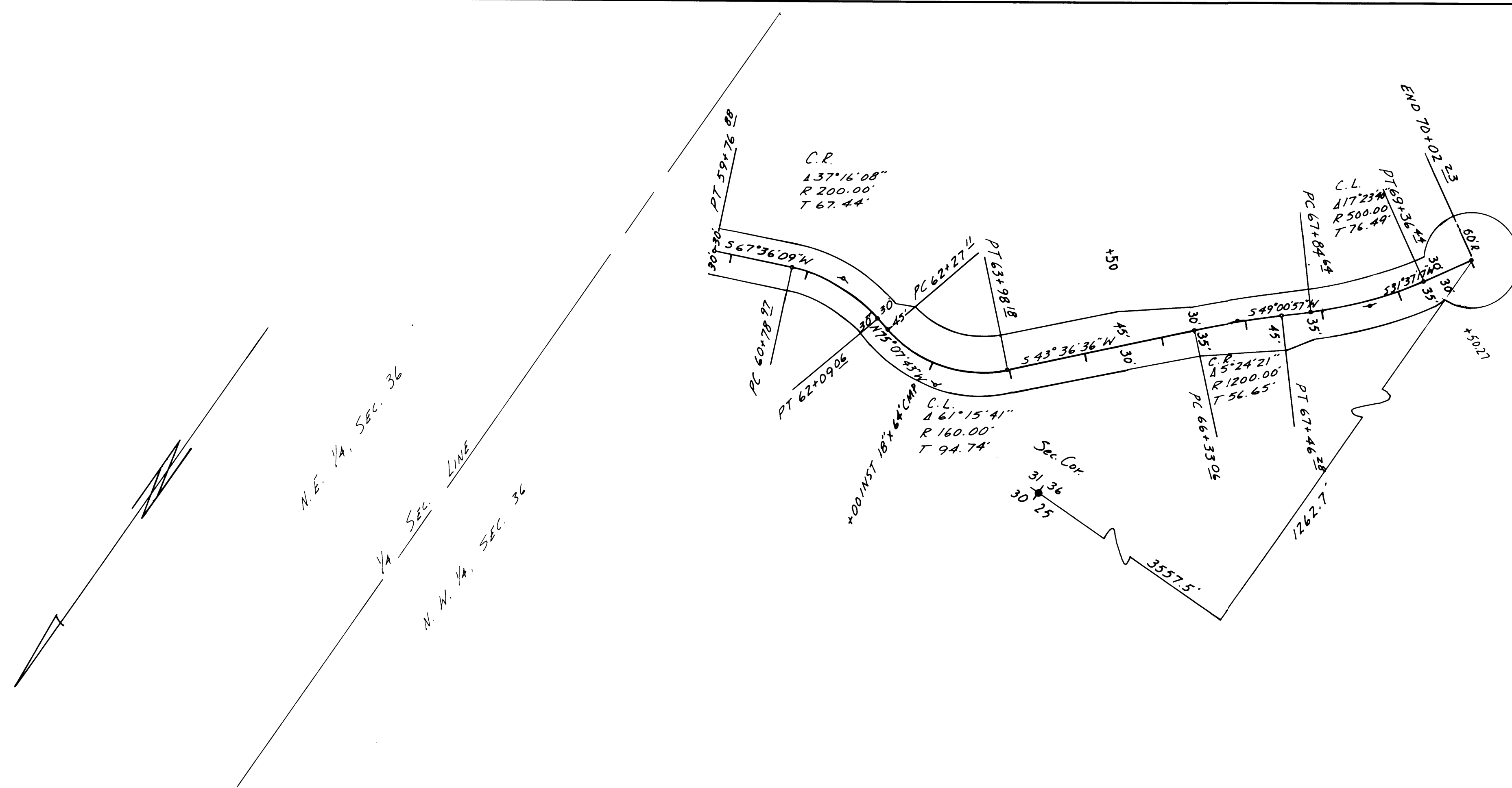


FILED  
 RECEIVED  
 MAR 11 1974  
 COUNTY SURVEYOR  
 CLATSOP COUNTY, ORE.

PLAN NOTE BOOK No.	DATE
	BY
	REVISIONS
	NO. OF WAY CHECKED

PROFILE NOTE BOOK No.	DATE
	BY
	REVISIONS
	NO. OF WAY CHECKED



CATTLE DRIVE  
 DIXONVILLE FARMS  
 SEC. 36, T27S, R5W  
 PREPARED FOR: AL SHAW  
 ENGINEER: W.S. BARNES  
 SCALE: 1"=100' DATE: DEC 1971  
 SHX 3043