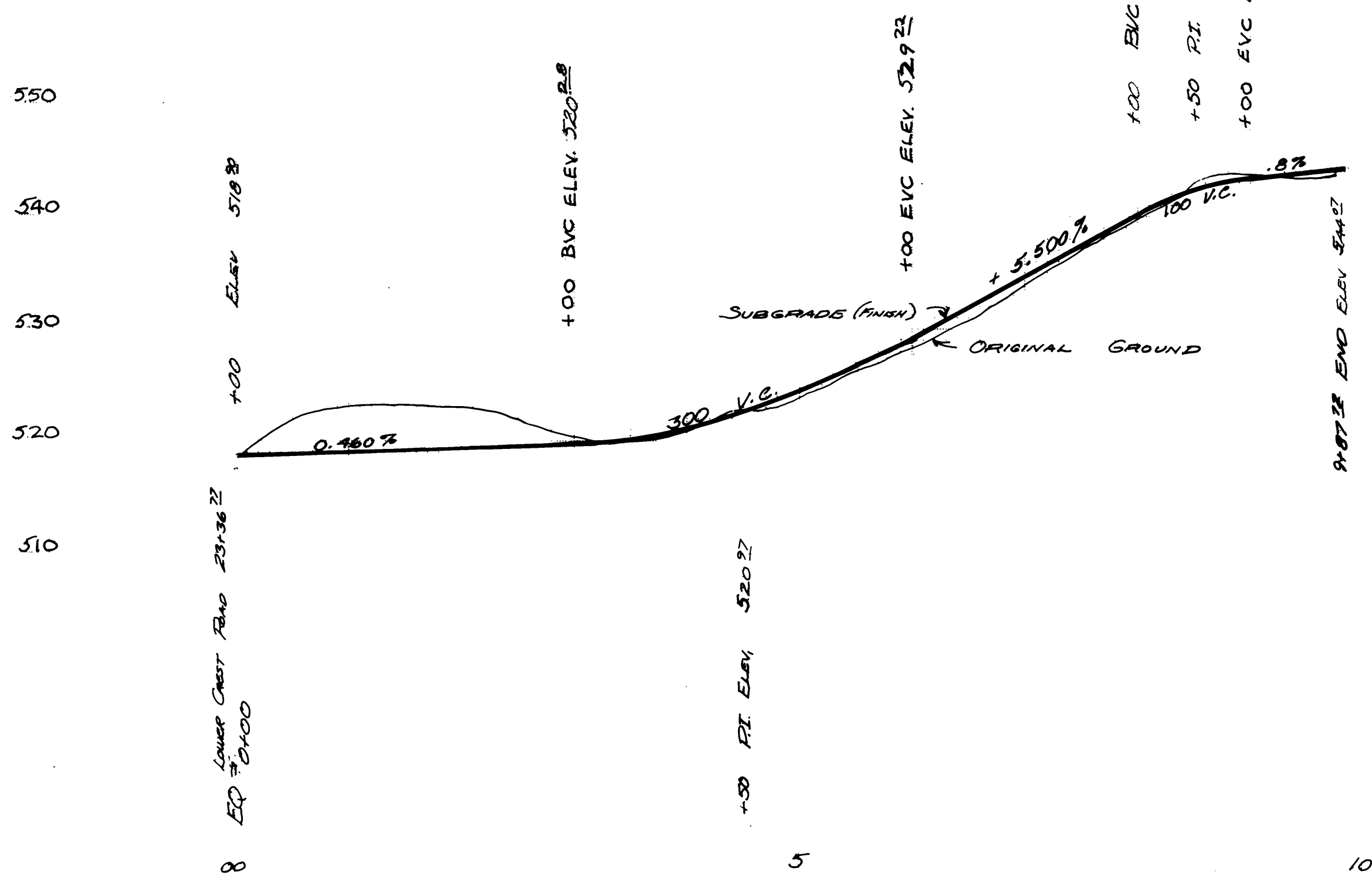
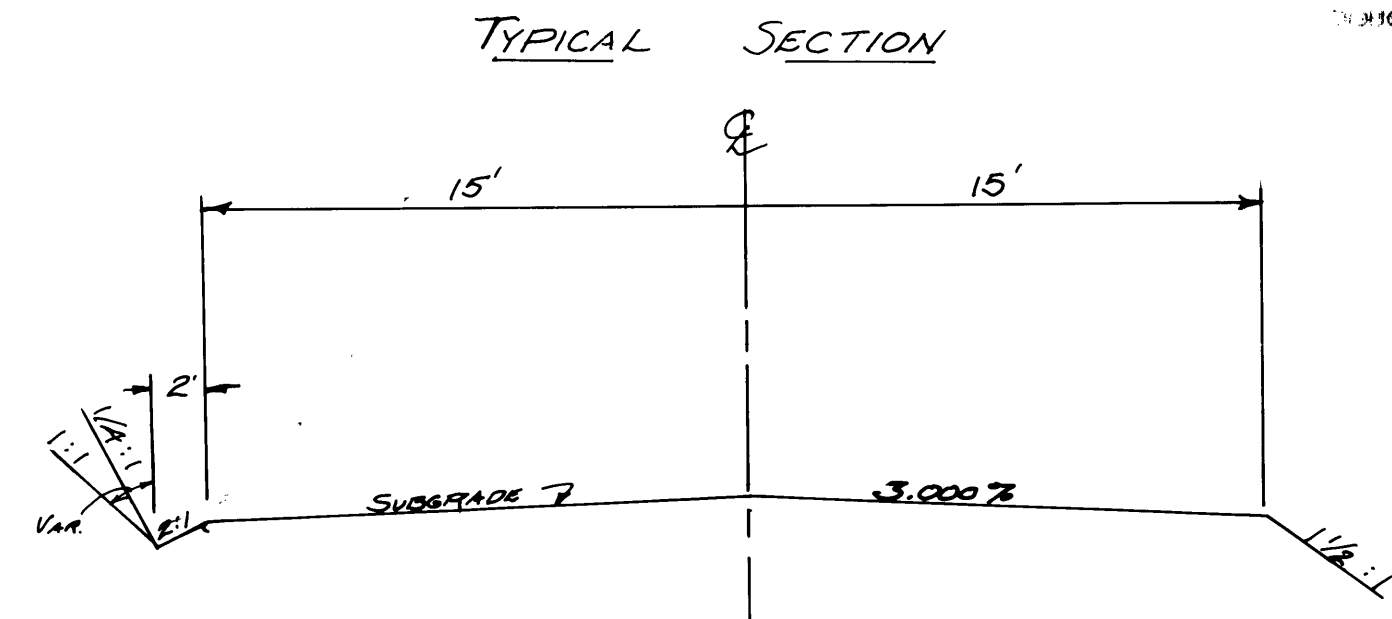
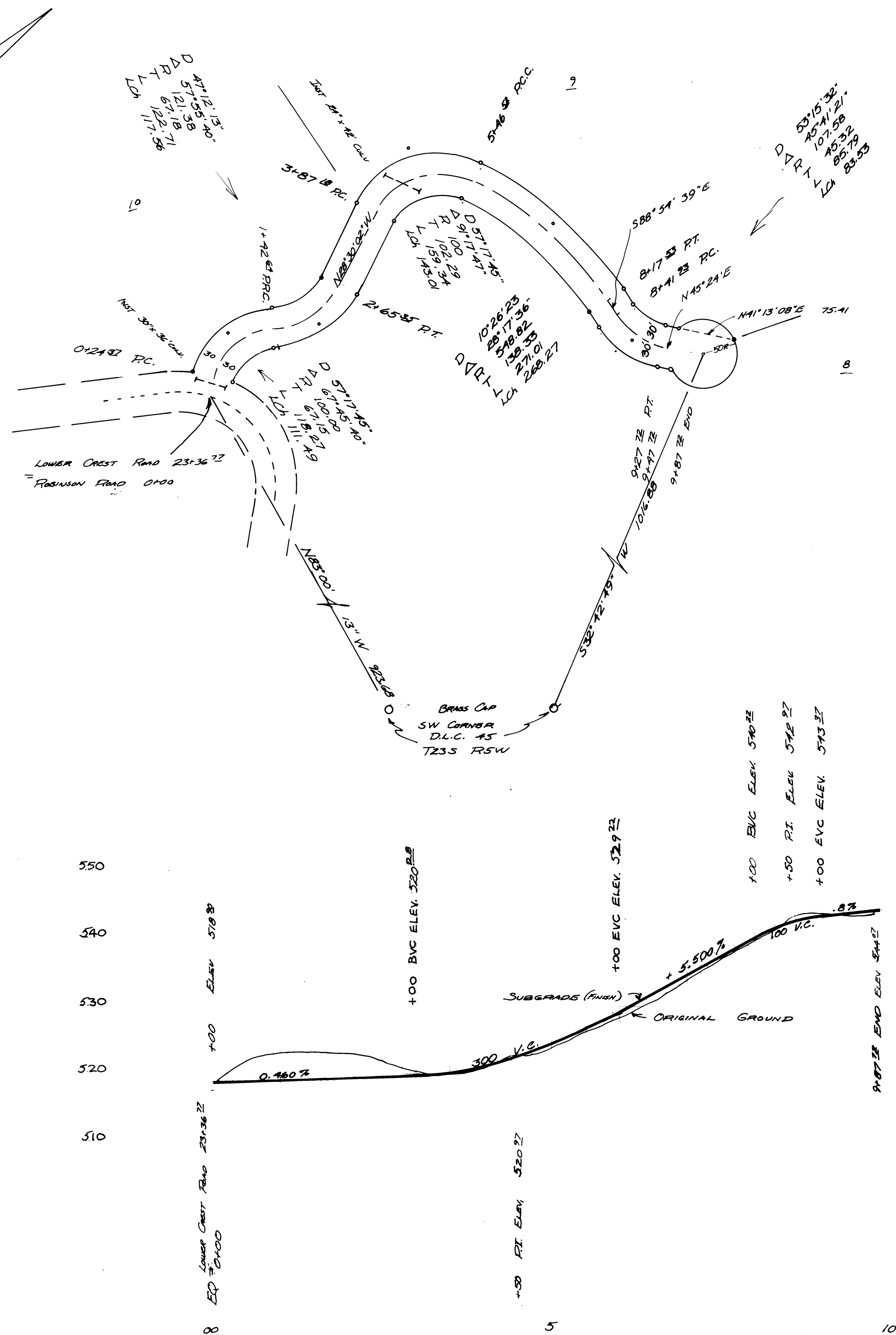


DATE	BY
PLAN	
SURVEYED	ALIGNMENT CHECKED
NOTE BOOK	RT. OF WAY CHECKED
NO.	NO.

DATE	BY
PROFILE	
SURVEYED	GRADES CHECKED
NOTE BOOK	STRUCTURE LOCATIONS CHECKED
NO.	NO.

SCALE HORIZ 1" = 100'  
VERT 1" = 10'



REGISTERED  
PROFESSIONAL  
LAND SURVEYOR  
*Donald A. Bentz*  
DONALD A. BENTZ  
639

ROBINSON ROAD A PORTION OF  
RICE HILL NORTH  
DAN WEBB - DEVELOPER  
DON BENTZ - DON GARRETT - L.S.S.  
IN SEC. 15, 16 & 17 T235 RSW W.M.  
AUG. 1973 SHEET 7 of 6

SEE REVISED SHEET  
FILED 12/21/74 DS-053