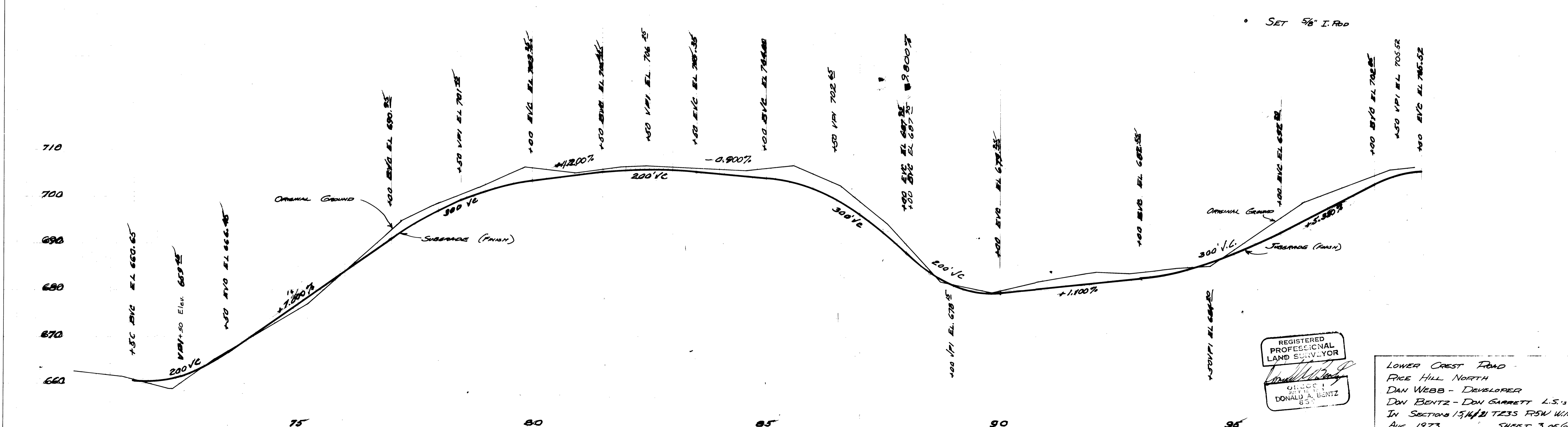
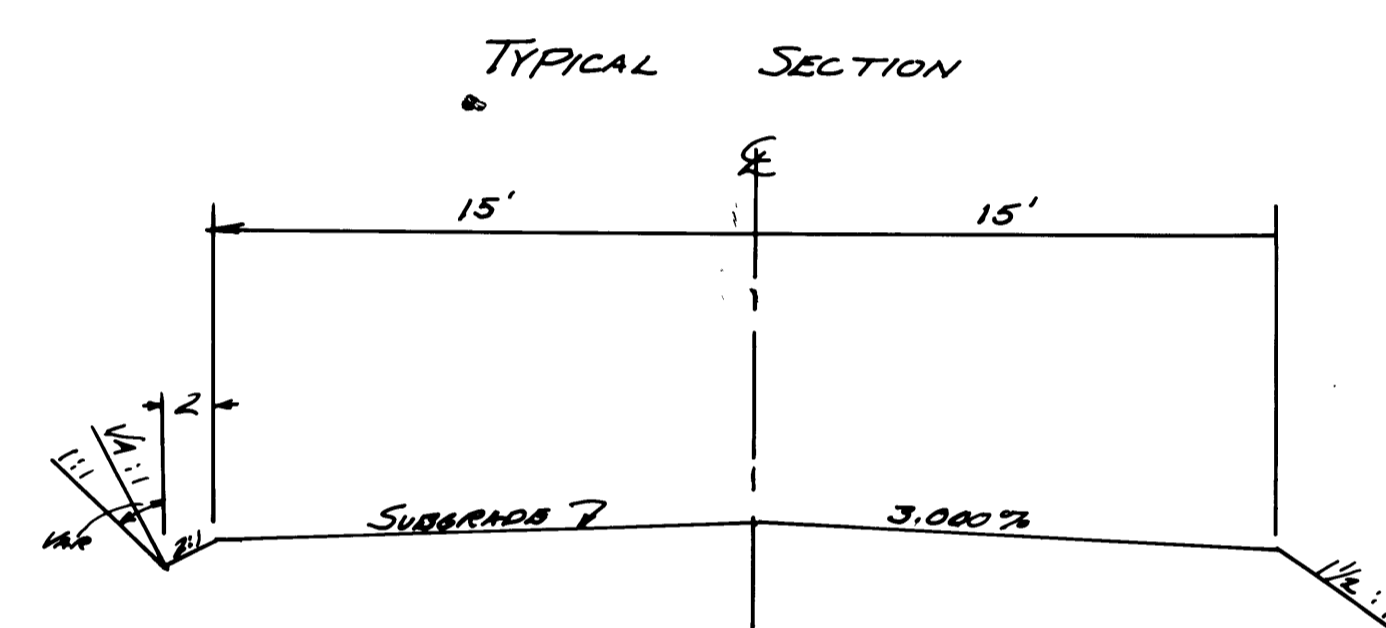
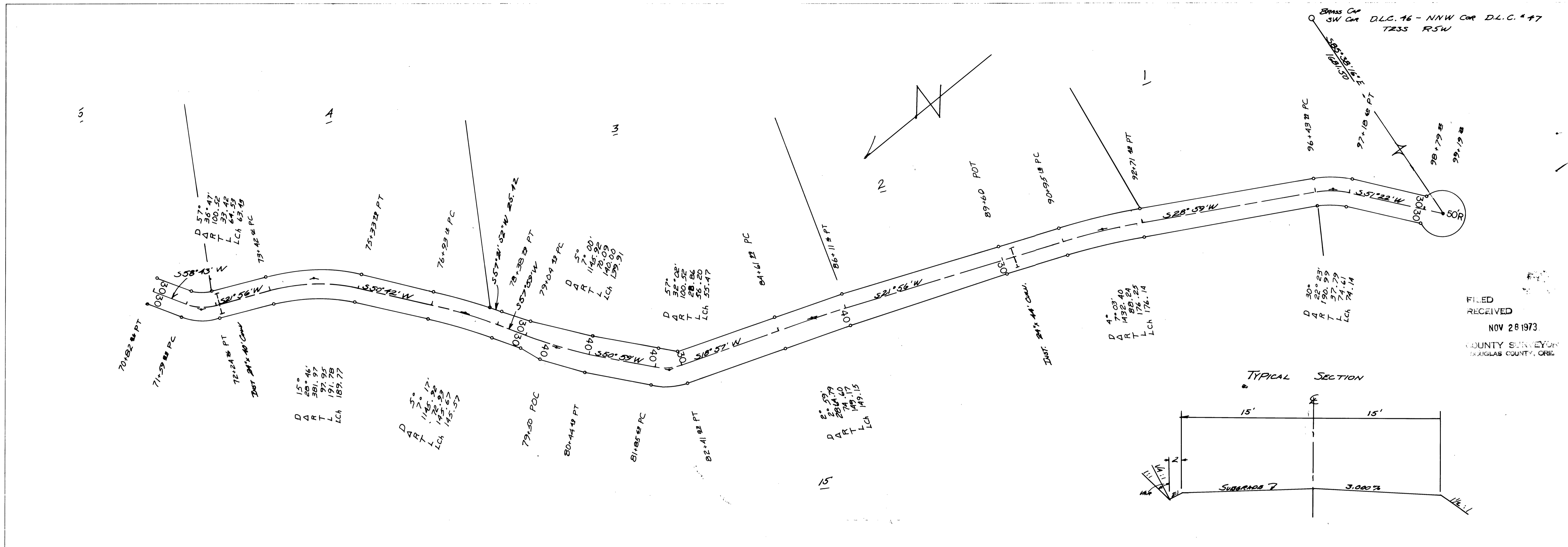


PLAN	REVISED	DATE
NO. BOOK	PLOTTED	BY
NOTE	ALIGNMENT CHECKED	
	ST. OF WAY CHECKED	

PROFILE	REVISED	DATE
NO. BOOK	GRADES CHECKED	BY
	STRUCTURE NOTATIONS CH'KD.	



FILED  
RECEIVED  
NOV 28 1973  
COUNTY SURVEYOR  
DAUGLAS COUNTY, ORE.

REGISTERED  
PROFESSIONAL  
LAND SURVEYOR  
*Donald A. Bentz*  
DONALD A. BENTZ  
8-3

LOWER CREST ROAD  
PRICE HILL NORTH  
DAN WEBB - DEVELOPER  
DON BENTZ - DON GARRETT L.S.'s  
IN SECTIONS 15, 14, 21 T23S R5W W1/4  
AUG 1973 SHEET 3 OF 6

SEE REVISED SHEET  
FILED 2/19/75

DS-052