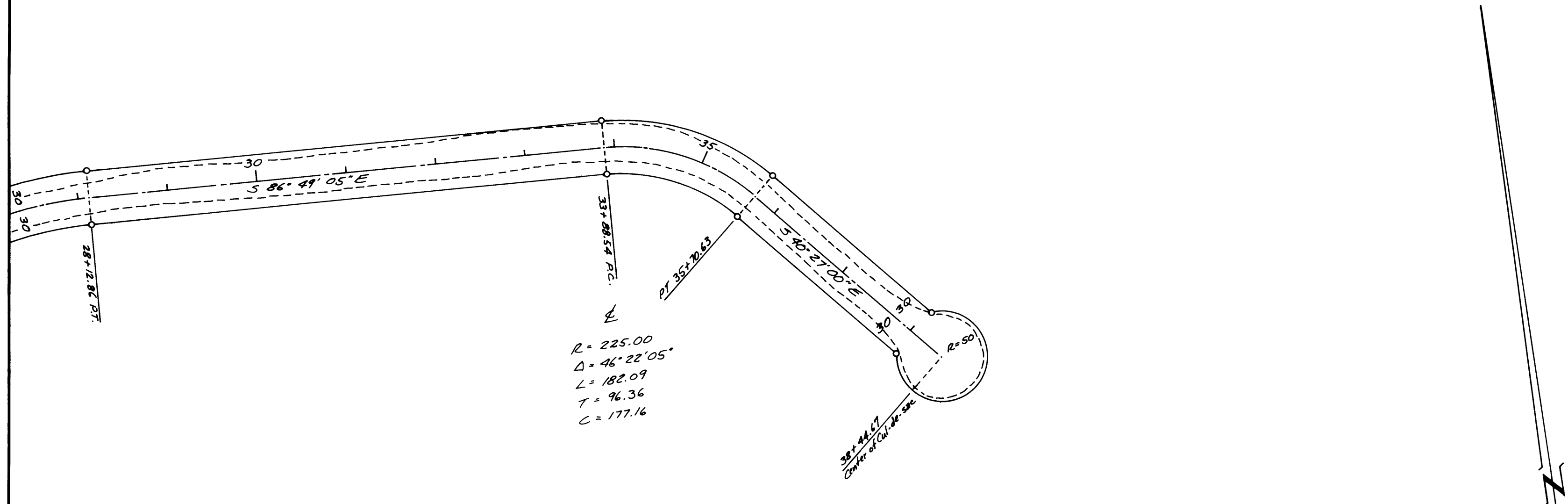


Filed 4/3/73

DATE	
BY	
SURVEYED	
PLOTTED	
ALIGNED	
CHECKED	
BY	
DATE	
NO.	



REGISTERED  
 PROFESSIONAL  
 LAND SURVEYOR  
*Victor M. McInd*  
 U.S. GEOLOGICAL SURVEY  
 VICTOR M. MCIND  
 934

**STANDLEY ROAD**  
 IN SECTION 34, T26S, R3W, W.M.  
 Douglas County, Ore.  
 AS CONSTRUCTED  
 PLAN AND PROFILE  
 DECEMBER 1972  
 Sheet 2 of 2

o ~ Indicates Set 5/8" x 30" Iron Rods

DATE	
BY	
SURVEYED	
PLOTTED	
ALIGNED	
CHECKED	
BY	
DATE	
NO.	

