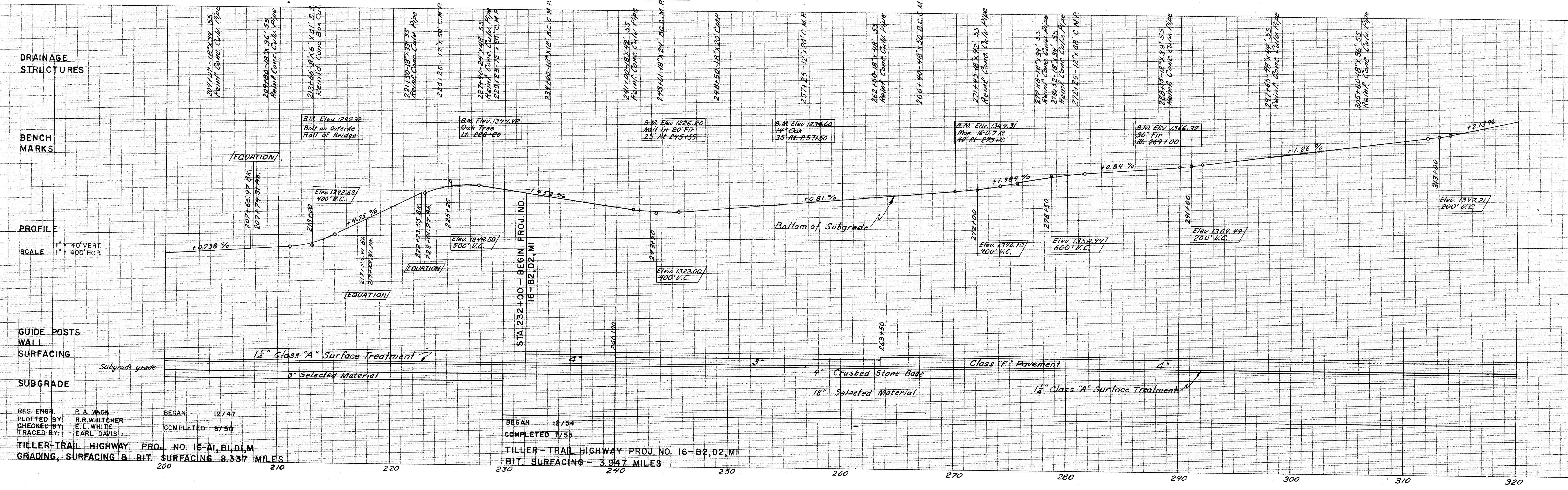


4" Crushed Stone Base Course
 1 1/2" Class "A" Surface Treatment
 3" - 4" Class "F" Pavement
TYPICAL SECTION - 232+00 to 440+03.14



RES. ENGR. R. A. MACK
 PLOTTED BY: R. R. WHITCHER
 CHECKED BY: E. L. WHITE
 TRACED BY: EARL DAVIS

BEGAN 12/47
 COMPLETED 8/50

BEGAN 12/54
 COMPLETED 7/55

TILLER-TRAIL HIGHWAY PROJ. NO. 16-A1, B1, D1, M
 GRADING, SURFACING & BIT SURFACING 8.337 MILES

TILLER-TRAIL HIGHWAY PROJ. NO. 16-B2, D2, M
 BIT SURFACING - 3.947 MILES