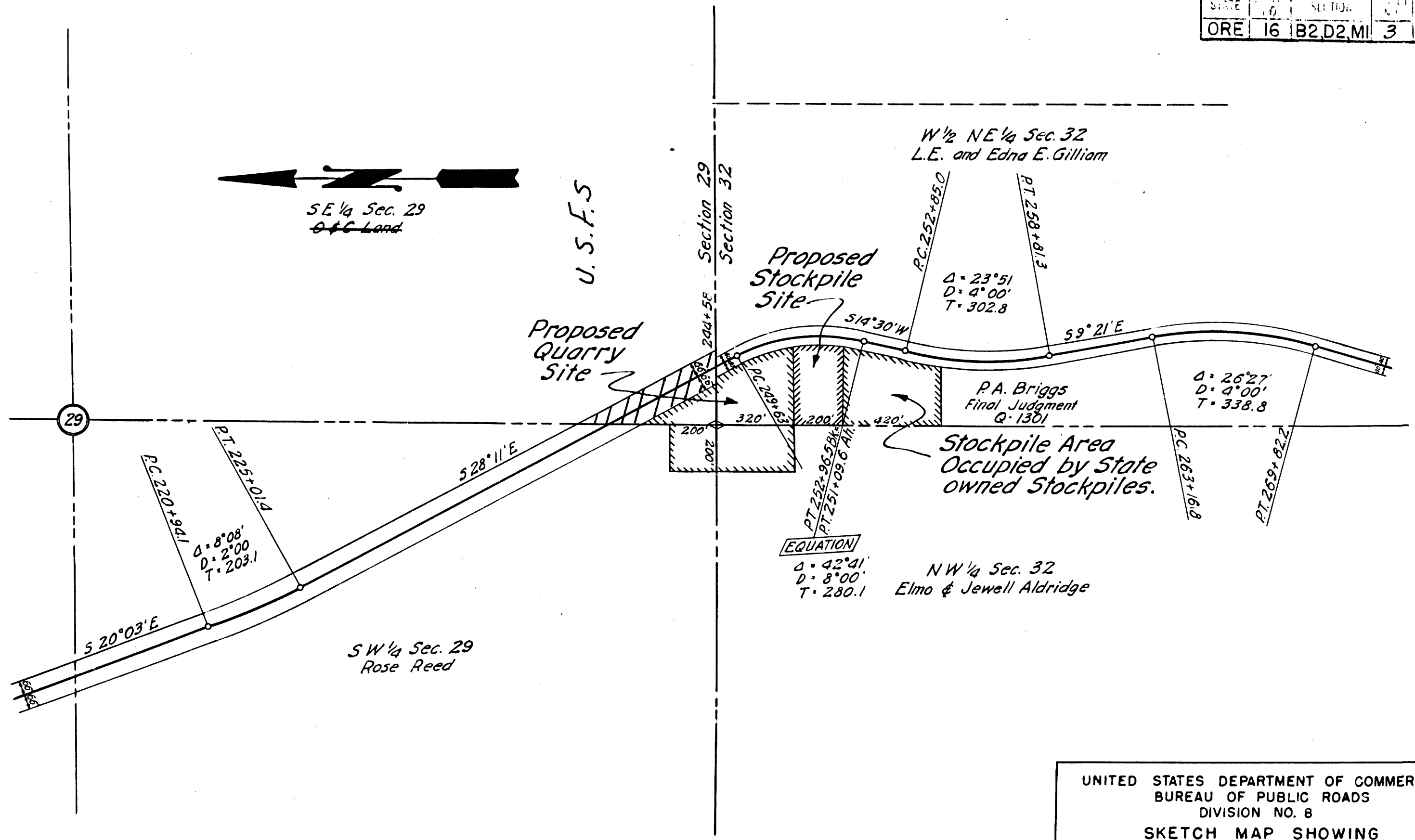


BUREAU OF PUBLIC ROADS				
STATE	SECTION	FILE	TOTAL SHEETS	
ORE	16 B2,D2,MI	3	5	



UNITED STATES DEPARTMENT OF COMMERCE
 BUREAU OF PUBLIC ROADS
 DIVISION NO. 8
 SKETCH MAP SHOWING
 PROPOSED QUARRY AND STOCKPILE SITE
 TILLER-TRAIL HIGHWAY
 PROJECT NO. 16-B2, D2, MI
 SCALE 1" = 400' DATE: SEPTEMBER 1954

K-7