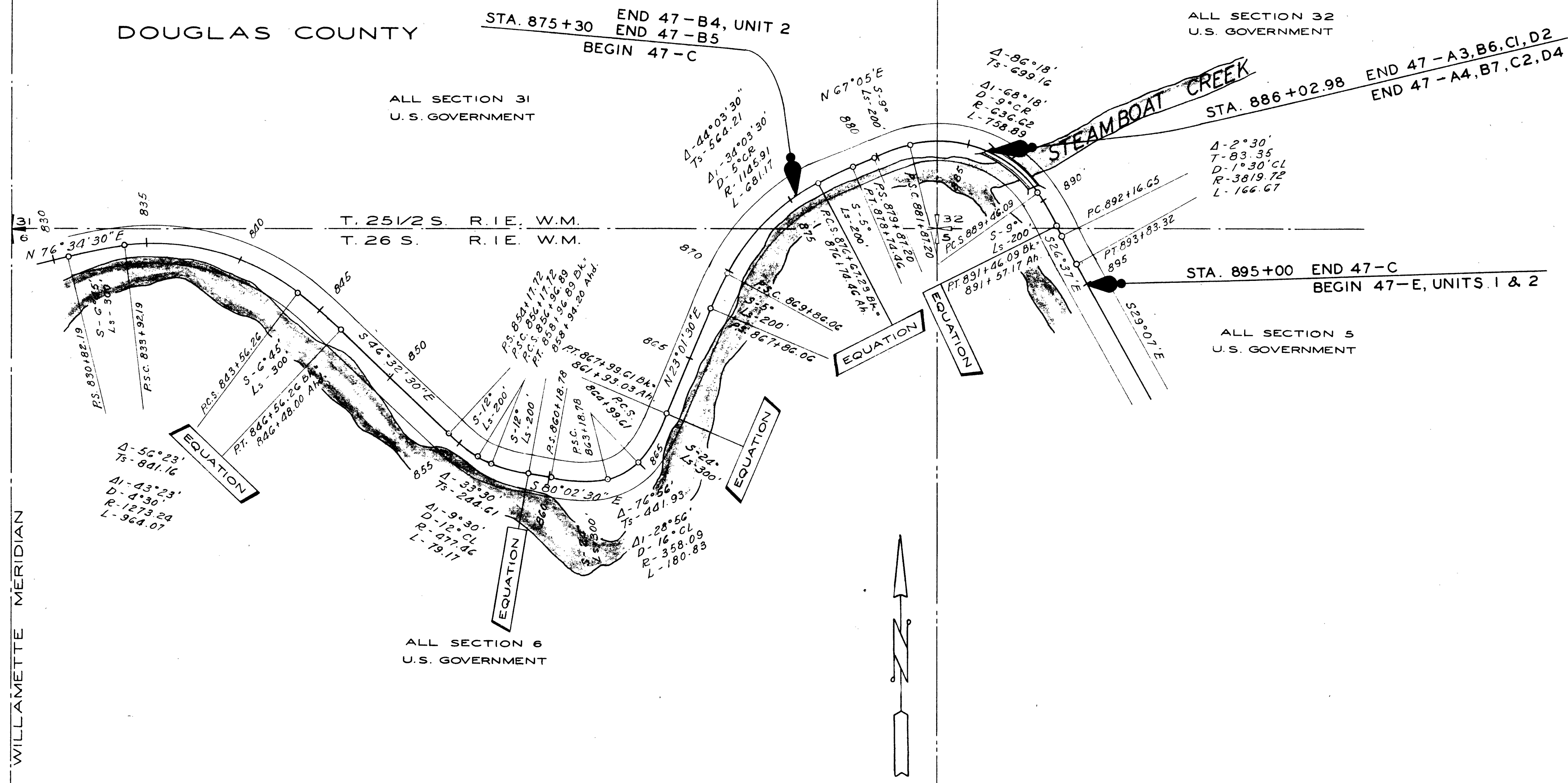
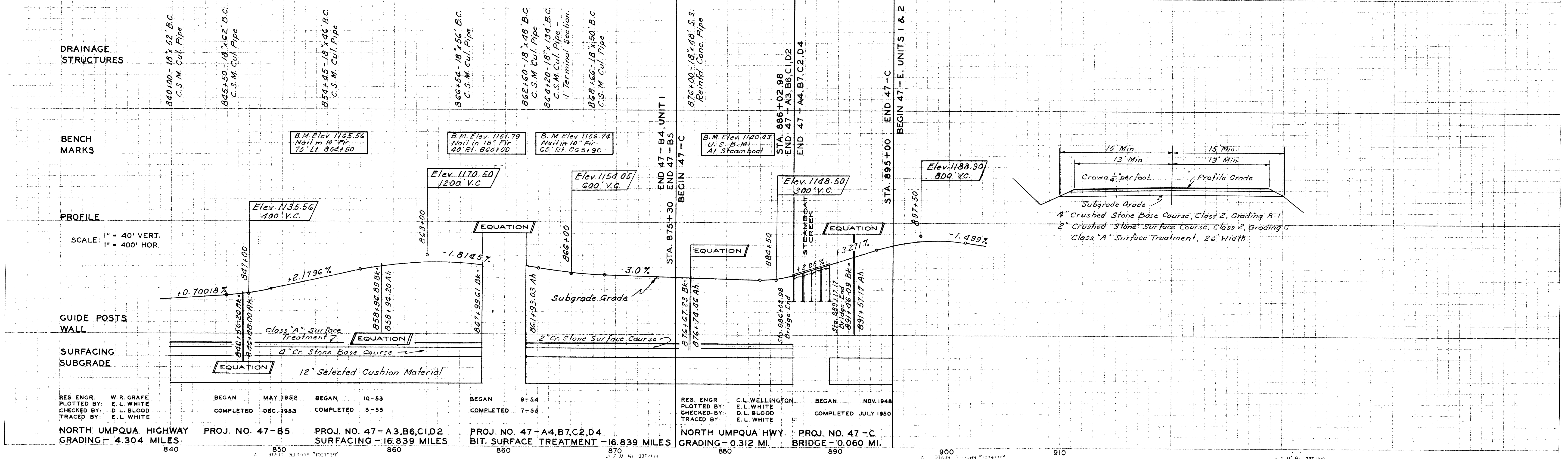


DOUGLAS COUNTY



U M P Q U A N A T I O N A L F O R E S T



RES. ENGR. W. R. GRAFE PLOTTED BY: E. L. WHITE CHECKED BY: D. L. BLOOD TRACED BY: E. L. WHITE	BEGAN MAY 1952 COMPLETED DEC. 1953	BEGAN 10-53 COMPLETED 3-55	BEGAN 9-54 COMPLETED 7-55	RES. ENGR. C. L. WELLINGTON PLOTTED BY: E. L. WHITE CHECKED BY: D. L. BLOOD TRACED BY: E. L. WHITE	BEGAN NOV. 1948 COMPLETED JULY 1950
--	---------------------------------------	-------------------------------	------------------------------	---	--

NORTH UMPQUA HIGHWAY PROJ. NO. 47-B5 SURFACING - 4.304 MILES
 PROJ. NO. 47-A3, B6, C1, D2 SURFACING - 16.839 MILES
 PROJ. NO. 47-A4, B7, C2, D4 BIT SURFACE TREATMENT - 16.839 MILES
 NORTH UMPQUA HWY. PROJ. NO. 47-C GRADING - 0.312 MI. BRIDGE - 0.060 MI.