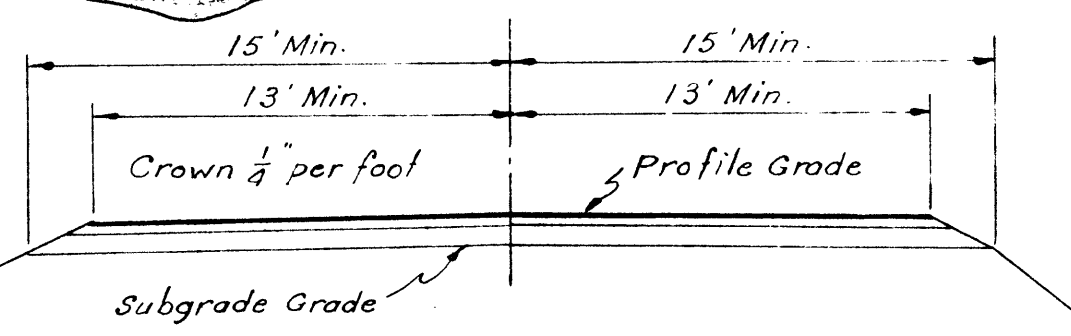
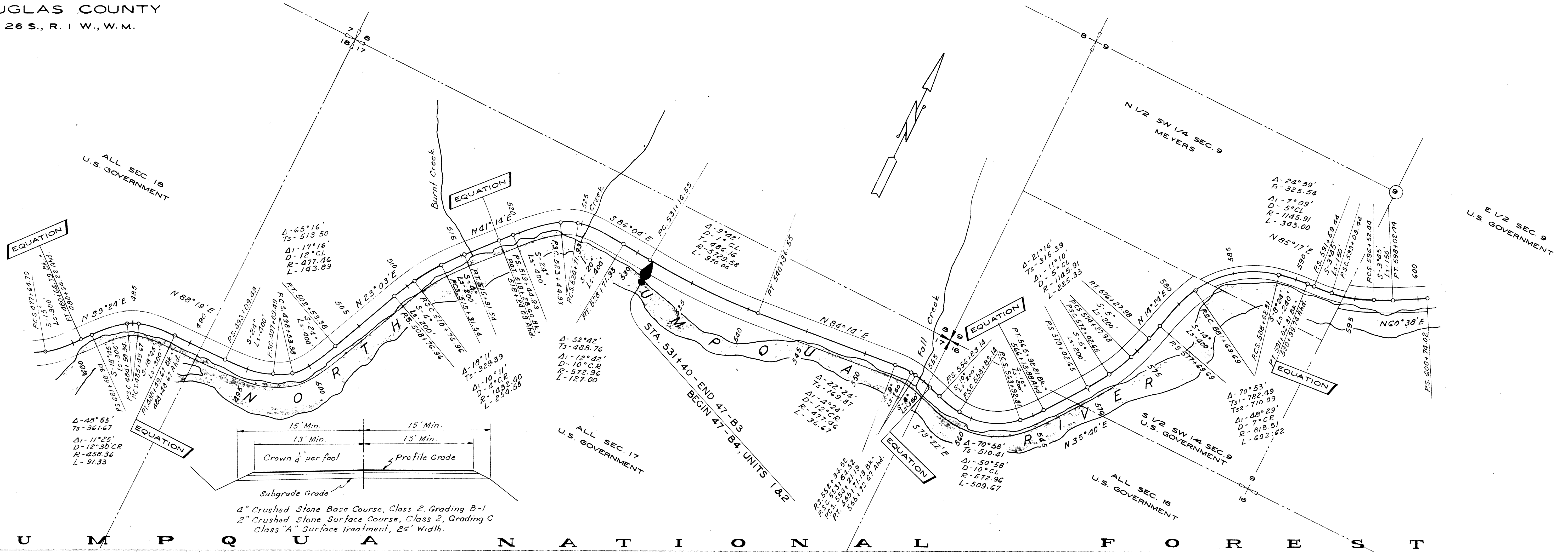
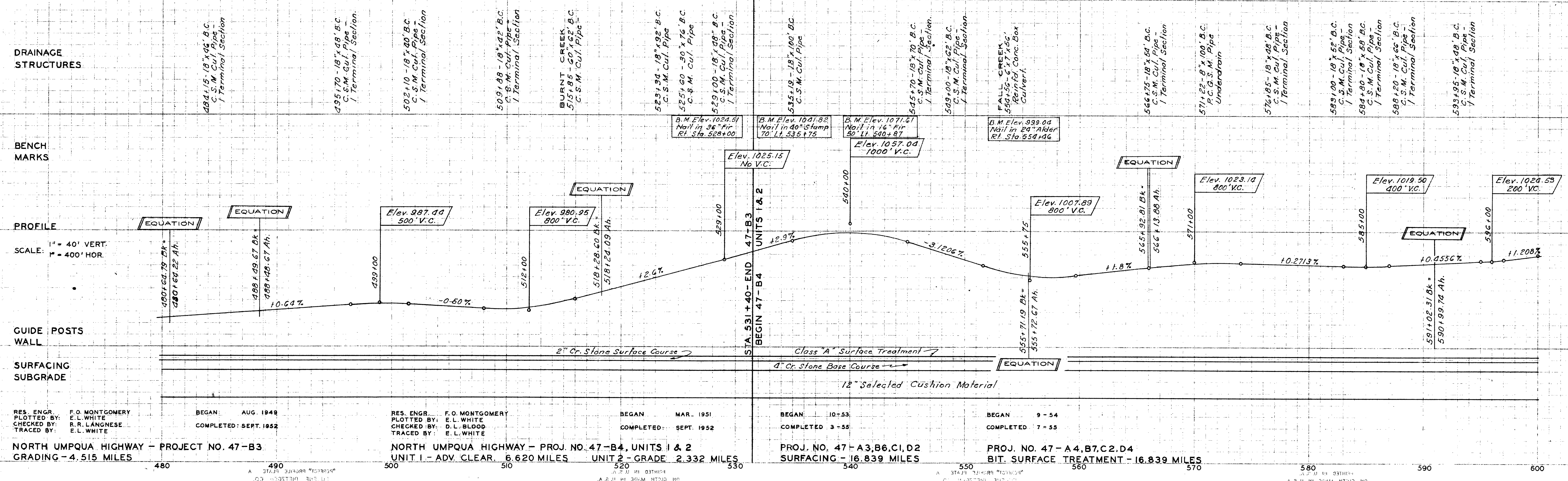


DOUGLAS COUNTY
T. 26 S., R. 1 W., W.M.



4" Crushed Stone Base Course, Class 2, Grading B-1
2" Crushed Stone Surface Course, Class 2, Grading C
Class "A" Surface Treatment, 26' Width.



RES. ENGR. F.O. MONTGOMERY PLOTTED BY: E.L. WHITE CHECKED BY: R.R. LANGHESE TRACED BY: E.L. WHITE	BEGAN: AUG. 1949 COMPLETED: SEPT. 1952	RES. ENGR. F.O. MONTGOMERY PLOTTED BY: E.L. WHITE CHECKED BY: D.L. BLOOD TRACED BY: E.L. WHITE	BEGAN: MAR. 1951 COMPLETED: SEPT. 1952	BEGAN: 10-53 COMPLETED: 3-55	BEGAN: 9-54 COMPLETED: 7-55							
NORTH UMPQUA HIGHWAY - PROJECT NO. 47-B3 GRADING - 4.515 MILES		NORTH UMPQUA HIGHWAY - PROJ. NO. 47-B4, UNITS 1 & 2 UNIT 1 - ADV. CLEAR. 6.620 MILES UNIT 2 - GRADE 2.332 MILES		PROJ. NO. 47-A3, B6, C1, D2 SURFACING - 16.839 MILES								
480	490	500	510	520	530	540	550	560	570	580	590	600