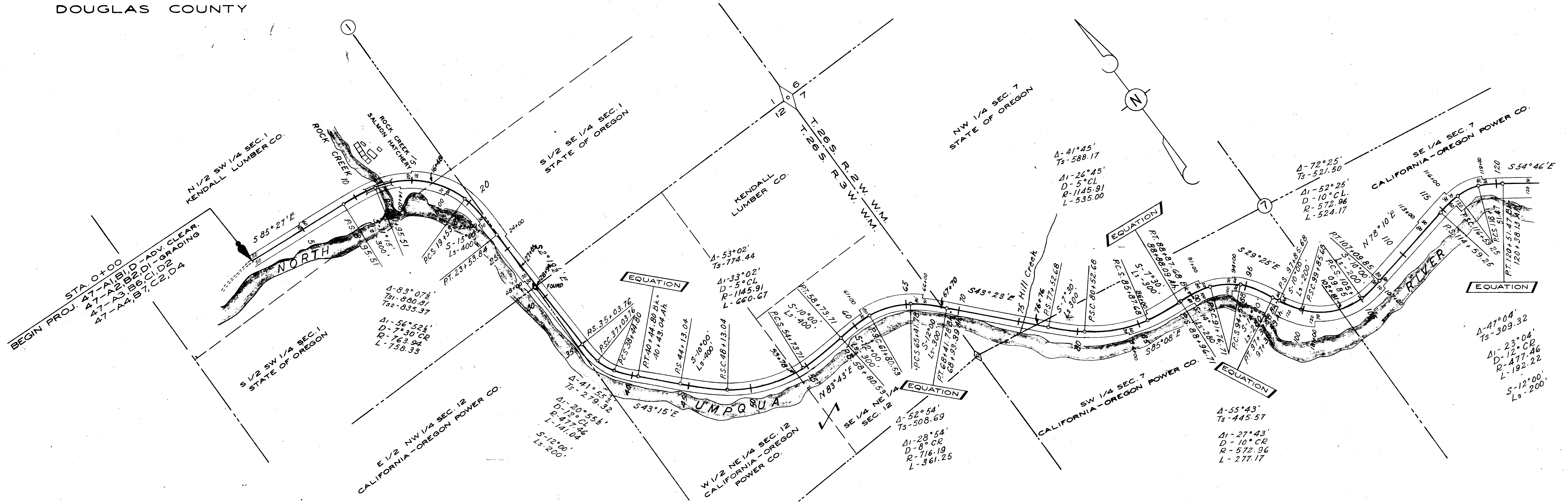
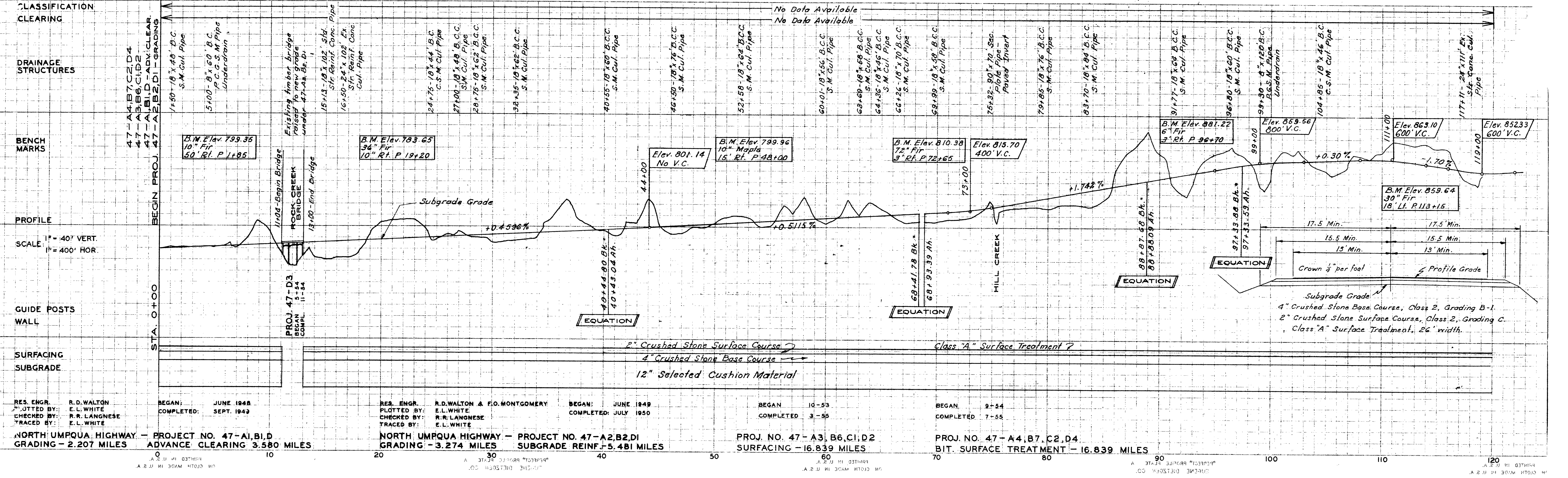


DOUGLAS COUNTY



U M P Q U A N A T I O N A L F O R E S T



RES. ENGR. R.D. WALTON PLOTTED BY: E.L. WHITE CHECKED BY: R.R. LANGHESE TRACED BY: E.L. WHITE	BEGAN: JUNE 1948 COMPLETED: SEPT. 1949	RES. ENGR. R.D. WALTON & E.O. MONTGOMERY PLOTTED BY: E.L. WHITE CHECKED BY: R.R. LANGHESE TRACED BY: E.L. WHITE	BEGAN: JUNE 1949 COMPLETED: JULY 1950	BEGAN: 10-53 COMPLETED: 3-55	BEGAN: 9-54 COMPLETED: 7-55
NORTH UMPQUA HIGHWAY - PROJECT NO. 47-A1,B1,D ADVANCE CLEARING - 2.207 MILES		NORTH UMPQUA HIGHWAY - PROJECT NO. 47-A2,B2,D1 SUBGRADE REINF. - 5.481 MILES		PROJECT NO. 47-A3,B6,C1,D2 SURFACING - 16.839 MILES	
NORTH UMPQUA HIGHWAY - PROJECT NO. 47-A4,B7,C2,D4 BIT. SURFACE TREATMENT - 16.839 MILES					

Subgrade Grade
 4" Crushed Stone Base Course, Class 2, Grading B-1
 2" Crushed Stone Surface Course, Class 2, Grading C
 Class "A" Surface Treatment, 26" width