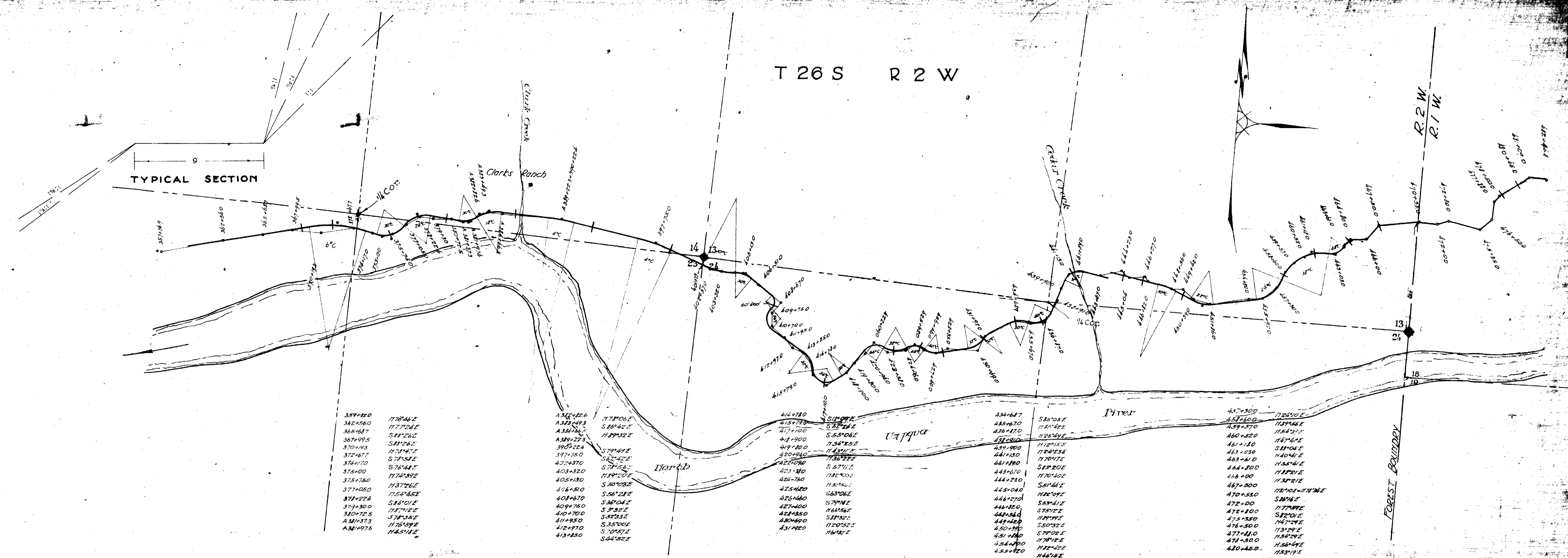


T 26 S R 2 W



| | | | | | | | |
|---------|----------|---------|----------|---------|----------|---------|----------|
| 359+200 | N77°46'E | 414+780 | S10°02'E | 434+487 | S82°08'E | 457+500 | N77°02'E |
| 362+060 | N77°26'E | 415+770 | S5°50'E | 435+470 | N11°45'E | 458+510 | N58°46'E |
| 365+487 | S81°26'E | 416+760 | N34°58'E | 436+460 | N28°56'E | 459+520 | N67°46'E |
| 367+095 | S81°26'E | 417+750 | N34°58'E | 437+500 | N10°15'E | 460+530 | N67°46'E |
| 370+493 | S78°54'E | 418+740 | N34°58'E | 438+490 | N10°15'E | 461+540 | S81°04'E |
| 372+677 | S78°54'E | 419+730 | N34°58'E | 439+480 | N10°15'E | 462+550 | N40°41'E |
| 374+710 | S78°54'E | 420+720 | N34°58'E | 440+470 | N10°15'E | 463+560 | N40°41'E |
| 375+400 | N77°59'E | 421+710 | N34°58'E | 441+460 | N10°15'E | 464+570 | N40°41'E |
| 377+050 | N73°26'E | 422+700 | N34°58'E | 442+450 | N10°15'E | 465+580 | N40°41'E |
| 379+224 | S81°01'E | 423+690 | N34°58'E | 443+440 | N10°15'E | 466+590 | N40°41'E |
| 380+725 | N77°02'E | 424+680 | N34°58'E | 444+430 | N10°15'E | 467+600 | N40°41'E |
| 381+313 | S78°53'E | 425+670 | N34°58'E | 445+420 | N10°15'E | 468+610 | N40°41'E |
| 381+976 | N45°18'E | 426+660 | N34°58'E | 446+410 | N10°15'E | 469+620 | N40°41'E |
| | | 427+650 | N34°58'E | 447+400 | N10°15'E | 470+630 | N40°41'E |
| | | 428+640 | N34°58'E | 448+390 | N10°15'E | 471+640 | N40°41'E |
| | | 429+630 | N34°58'E | 449+380 | N10°15'E | 472+650 | N40°41'E |
| | | 430+620 | N34°58'E | 450+370 | N10°15'E | 473+660 | N40°41'E |
| | | 431+610 | N34°58'E | 451+360 | N10°15'E | 474+670 | N40°41'E |
| | | 432+600 | N34°58'E | 452+350 | N10°15'E | 475+680 | N40°41'E |
| | | 433+590 | N34°58'E | 453+340 | N10°15'E | 476+690 | N40°41'E |
| | | 434+580 | N34°58'E | 454+330 | N10°15'E | 477+700 | N40°41'E |
| | | 435+570 | N34°58'E | 455+320 | N10°15'E | 478+710 | N40°41'E |
| | | 436+560 | N34°58'E | 456+310 | N10°15'E | 479+720 | N40°41'E |
| | | 437+550 | N34°58'E | 457+300 | N10°15'E | 480+730 | N40°41'E |

DRAINAGE STRUCTURES

BENCH MARKS

PROFILE

Scale: 1" = 400'

Plotted by: J.L. Myers
 Traced: L. Krichesky
 Date: 10-18
 North Umpqua 1977-1978
 Length: 19.47 mi

