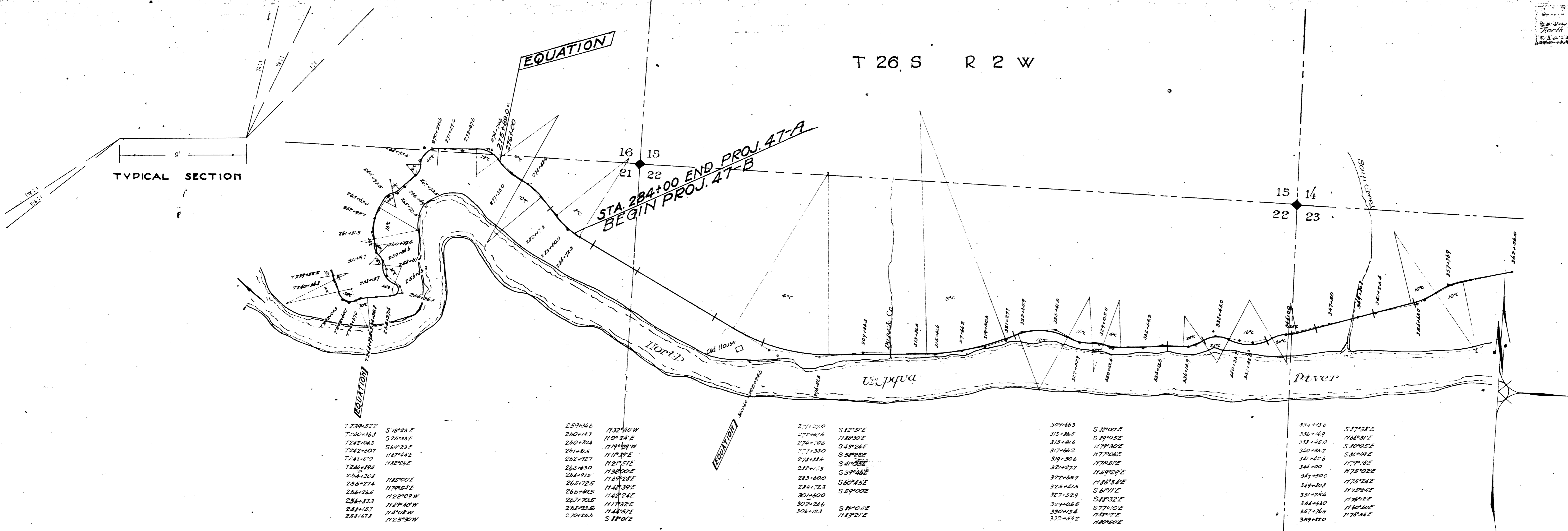


T 26 S R 2 W



7239+522	S 10°23' E
7240+363	S 20°33' E
7241+043	S 64°23' E
7242+607	N 67°44' E
7243+410	N 82°28' E
7244+194	N 82°28' E
7245+201	N 82°28' E
7246+274	N 79°54' E
7247+265	N 72°00' W
7248+333	N 47°30' W
7249+151	N 47°30' W
7250+174	N 25°30' W

259+346	N 32°40' W
260+187	N 09°24' E
261+704	N 19°58' W
262+815	N 17°39' E
263+827	N 27°51' E
264+910	N 38°00' E
265+725	N 49°24' E
266+995	N 44°39' E
267+705	N 44°24' E
268+828	N 17°32' E
269+556	N 44°39' E
	S 19°12' E

271+270	S 42°51' E
272+676	N 41°50' E
273+708	S 43°24' E
274+330	S 58°28' E
275+114	S 41°05' E
276+113	S 39°48' E
277+400	S 67°15' E
278+723	S 67°15' E
279+400	S 89°00' E
301+400	S 89°00' E
302+246	S 89°00' E
303+123	S 89°00' E
	N 43°21' E

309+663	S 100°0' E
310+345	S 89°00' E
311+416	S 89°00' E
312+662	N 77°30' E
313+506	N 77°30' E
314+277	N 77°30' E
315+689	N 89°24' E
316+415	N 86°34' E
317+524	S 67°12' E
318+085	S 89°32' E
319+085	S 77°00' E
320+134	N 41°0' E
321+542	N 41°0' E

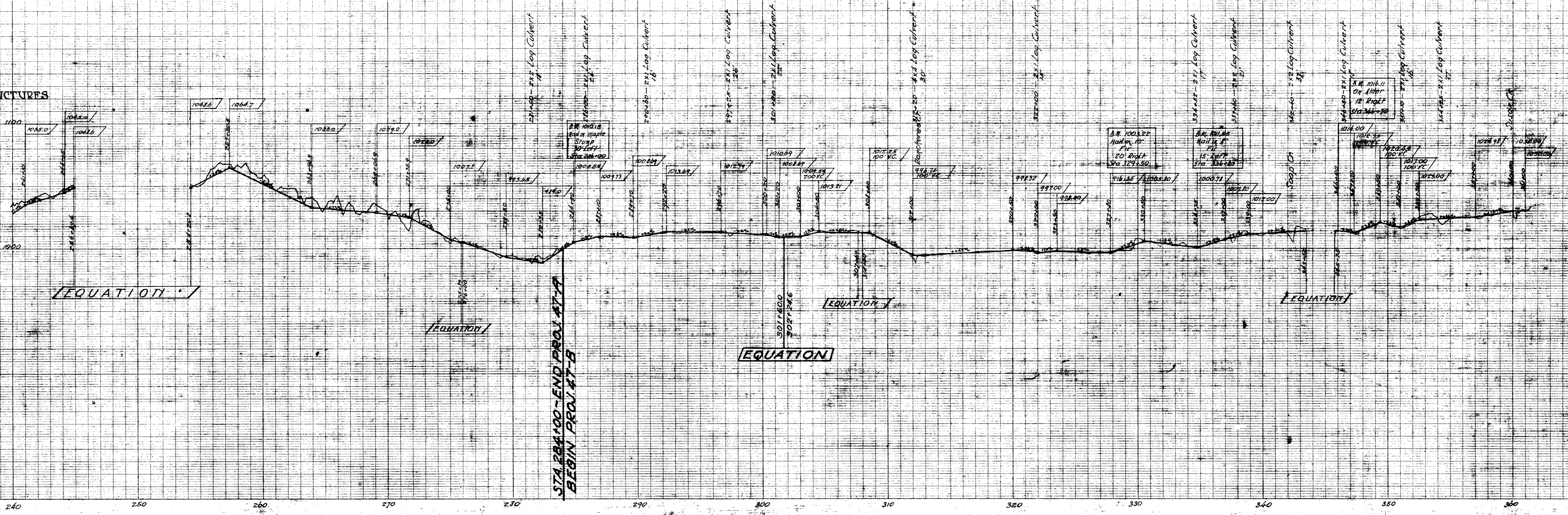
331+710	S 17°58' E
332+419	N 64°31' E
333+450	S 100°0' E
334+352	S 89°00' E
335+428	N 77°30' E
336+400	N 77°30' E
337+850	N 75°24' E
338+201	N 75°24' E
339+254	N 75°24' E
340+254	N 75°24' E
341+630	N 75°24' E
342+764	N 75°24' E
343+100	N 75°24' E

DRAINAGE STRUCTURES

BENCH MARKS

PROFILE

Scale - Hor 1" = 400'  
 Ver 1" = 40'



Plotted by J.W. Myers  
 Traced by L. Kitchin  
 Project No. 10  
 North Umpqua 1912-1915  
 Length 1947 III