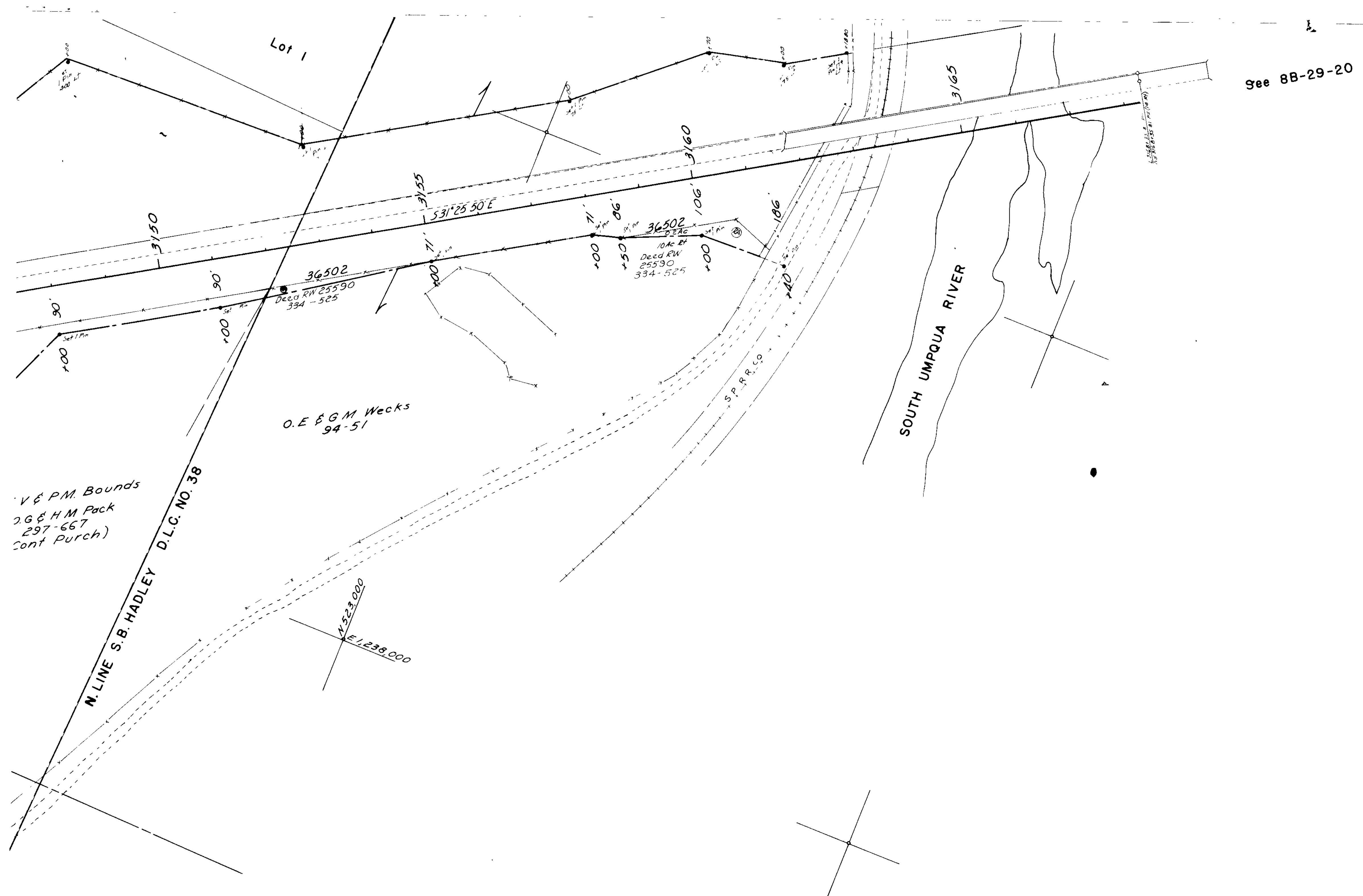


FILED
MAY 5 1988
COUNTY SURVEYOR
DOUGLAS COUNTY, ORE.

Area C.S. 63/68
0-112



ROBERTS MOUNTAIN - MYRTLE CREEK SECTION
 PACIFIC HIGHWAY
 DOUGLAS COUNTY
 SCALE: 1" = 100'
 PART 1 of 2 PARTS
 AUGUST, 1963
 DRG. NO. 8B-29-3

Survey Completed 3-16-67
 Revised: Mar. 1977
 Revised: April 1979
 Revised: Mar., 1982
 Revised: Mar., 1983 - Mar., 1986
 Page 5 of 5

REGISTERED
 PROFESSIONAL
 LAND SURVEYOR
 OREGON
 MAR. 22, 1977
 JAMES J. O'NEAL
 1192

ROBERTS MOUNTAIN - MYRTLE CREEK SECTION
 PACIFIC HIGHWAY
 DOUGLAS COUNTY
 SCALE: 1" = 100'
 PART 1 OF 2 PARTS
 DRG. NO. 8B-29-3

0-112