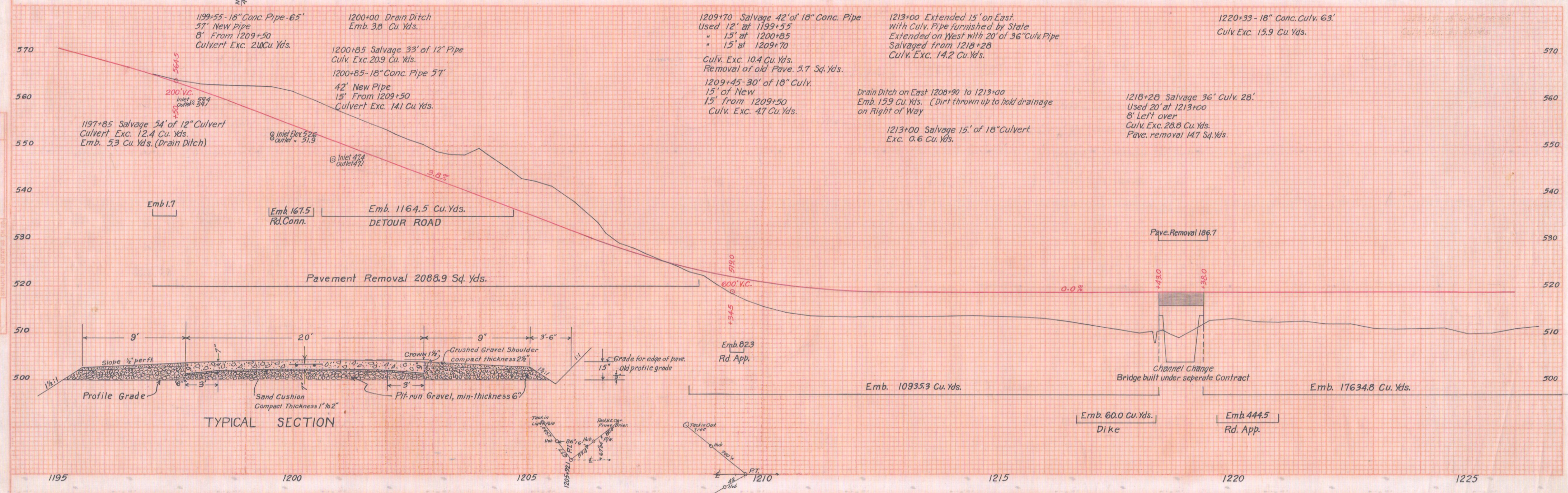
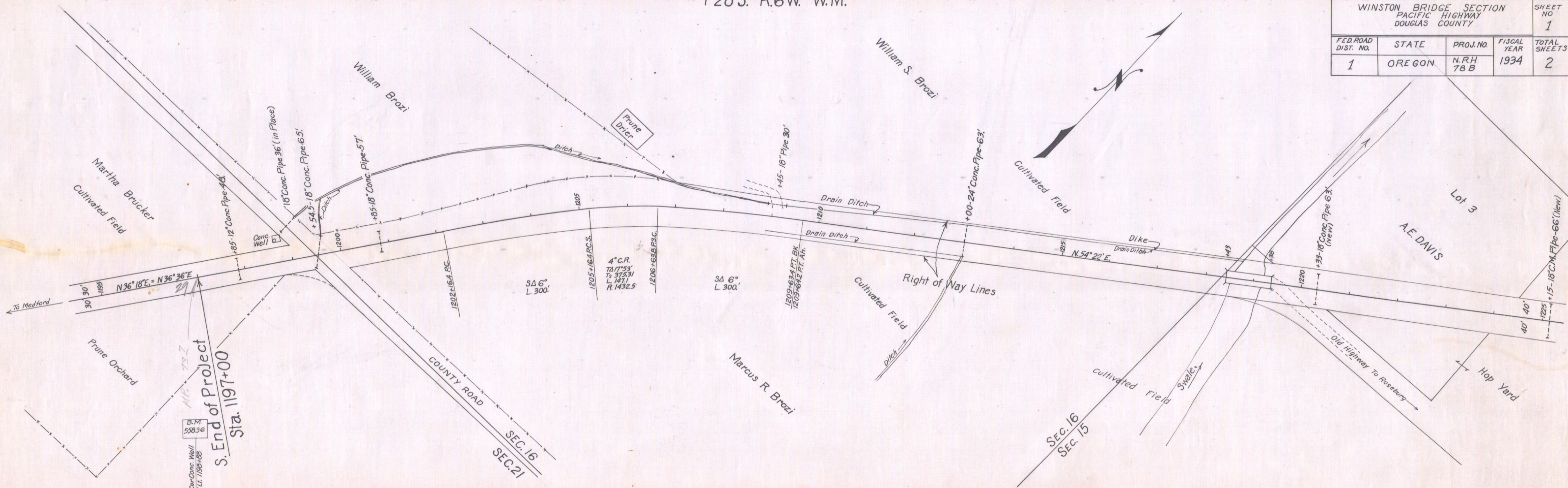
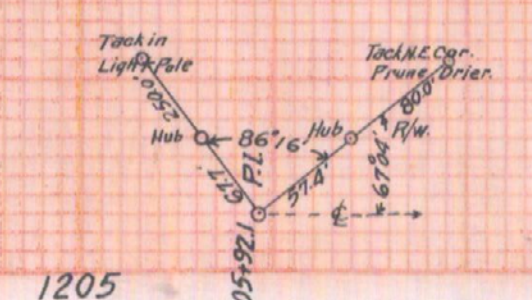


T28 S. R.6 W. W.M.

WINSTON BRIDGE SECTION PACIFIC HIGHWAY DOUGLAS COUNTY				SHEET NO 1
FED. ROAD DIST. NO.	STATE	PROJ. NO.	FISCAL YEAR	TOTAL SHEETS
1	OREGON	N.R.H 78 B	1934	2



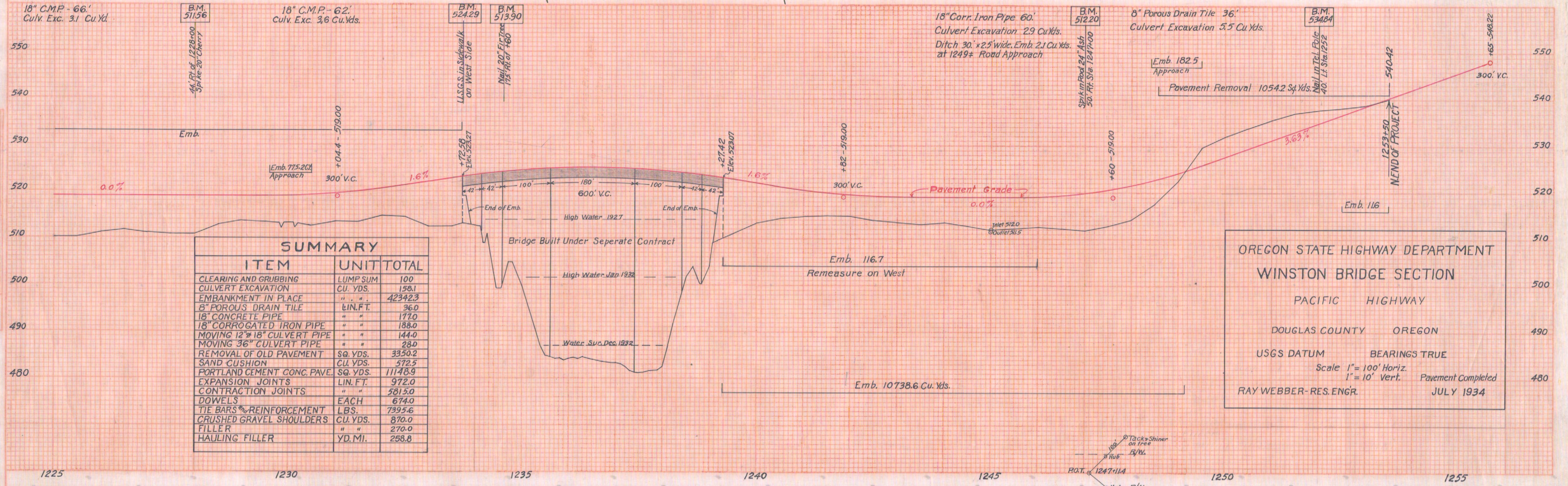
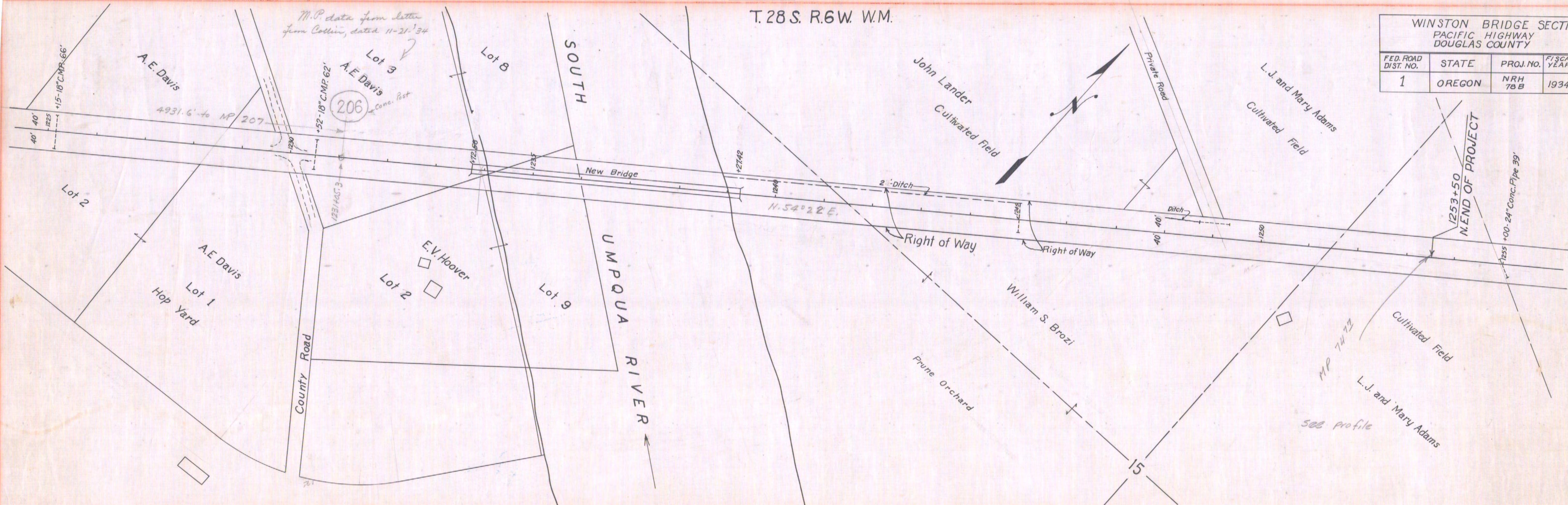
TYPICAL SECTION



VERTICAL PLAN - PROFILE PLATE 1
SEE 4' VERTICAL DISTANCE

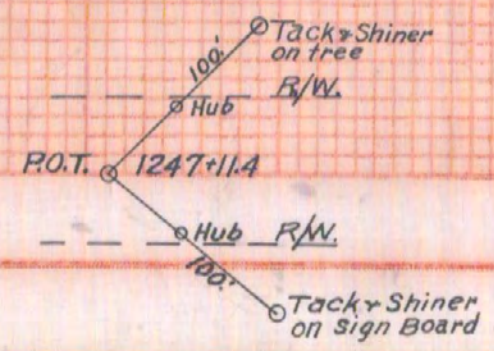
T.28S. R.6W. W.M.

WINSTON BRIDGE SECTION				
PACIFIC HIGHWAY				
DOUGLAS COUNTY				
FED. ROAD DIST. NO.	STATE	PROJ. NO.	FISCAL YEAR	SHEET NO
1	OREGON	NRH 78 B	1934	2
TOTAL SHEETS				2



SUMMARY		
ITEM	UNIT	TOTAL
CLEARING AND GRUBBING	LUMP SUM	100
CULVERT EXCAVATION	CU. YDS.	156.1
EMBANKMENT IN PLACE	" "	42342.3
8" POROUS DRAIN TILE	LIN. FT.	36.0
18" CONCRETE PIPE	" "	177.0
18" CORRUGATED IRON PIPE	" "	188.0
MOVING 12" x 18" CULVERT PIPE	" "	144.0
MOVING 36" CULVERT PIPE	" "	28.0
REMOVAL OF OLD PAVEMENT	SQ. YDS.	3350.2
SAND CUSHION	CU. YDS.	572.5
PORTLAND CEMENT CONC. PAVE.	SQ. YDS.	11148.9
EXPANSION JOINTS	LIN. FT.	972.0
CONTRACTION JOINTS	" "	5615.0
DOWELS	EACH	674.0
TIE BARS REINFORCEMENT	LBS.	7395.6
CRUSHED GRAVEL SHOULDERS	CU. YDS.	870.0
FILLER	" "	270.0
HAULING FILLER	YD. MI.	258.8

OREGON STATE HIGHWAY DEPARTMENT
 WINSTON BRIDGE SECTION
 PACIFIC HIGHWAY
 DOUGLAS COUNTY OREGON
 USGS DATUM BEARINGS TRUE
 Scale 1" = 100' Horiz.
 1" = 10' Vert. Pavement Completed
 RAY WEBBER-RES. ENGR. JULY 1934



HIGHWAY PLAN & PROFILE PLATE
 THE A. S. CO. ENGINEERS, INC.