

N. END OF PROJECT
MP 220.39

CANYONVILLE

To Roseburg

Stockpile Site 'A'
MP 224.7

Pacific Highway
U.S. Route 99

Stockpile Site 'C'
MP 237.4

QUARRY and STOCKPILE SITE 'B'
and 700 ft. S.E. of MP 235.06
SEE ENLARGED MAP

DOUGLAS CO. JOSEPHINE CO. Cr.

MP 239.11

Stockpile Site 'D'
MP 241.0

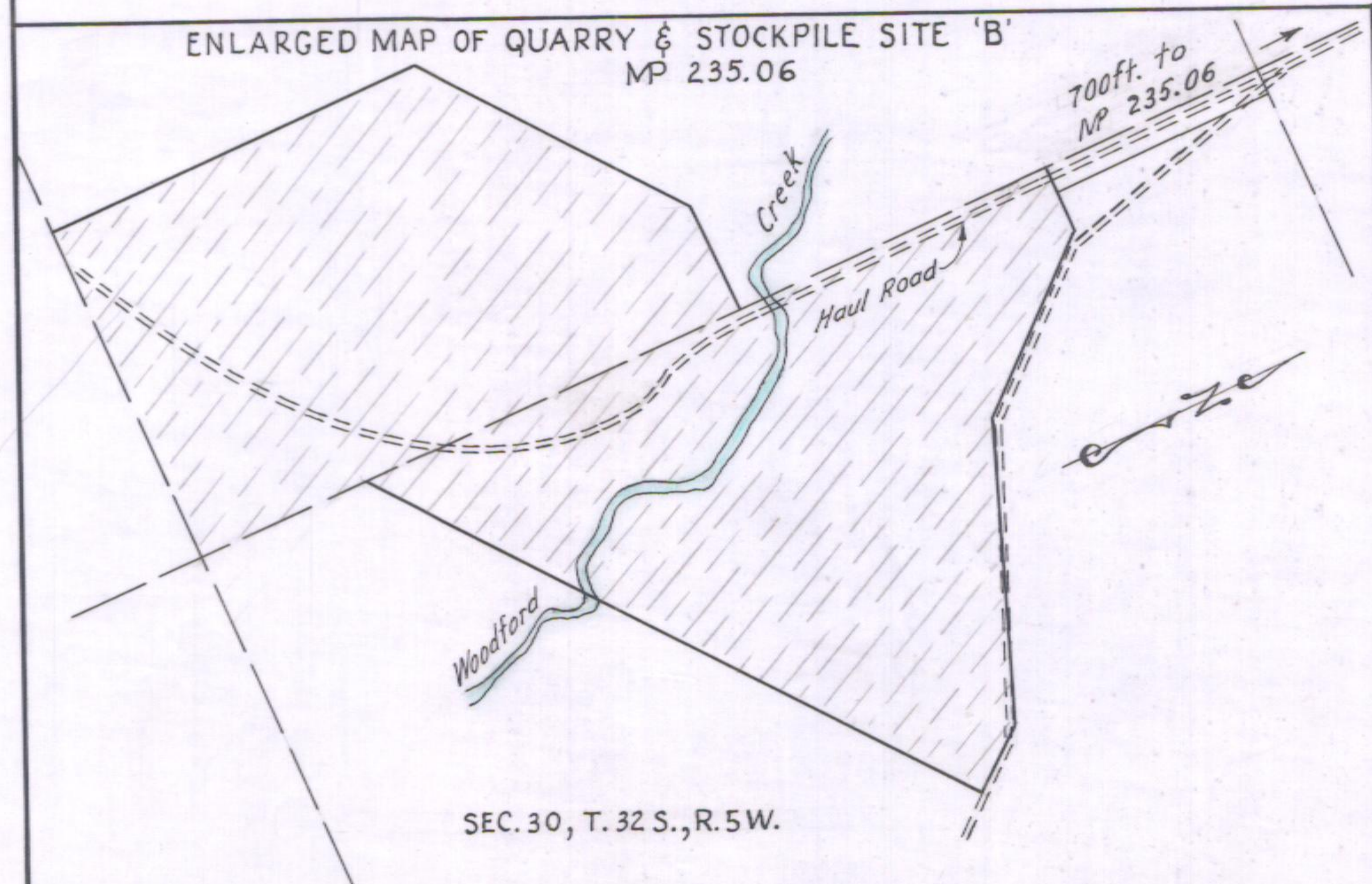
S. END OF PROJECT
MP 242.18

To Grants Pass

Wolf Creek

Wolf

ENLARGED MAP OF QUARRY & STOCKPILE SITE 'B'
MP 235.06



SEC. 30, T. 32 S., R. 5 W.

OREGON STATE HIGHWAY DEPARTMENT
Sketch Map
CANYONVILLE - WOLF CREEK
ROCK PRODUCTION PROJECT
PACIFIC HIGHWAY
DOUGLAS & JOSEPHINE COUNTIES
April, 1962