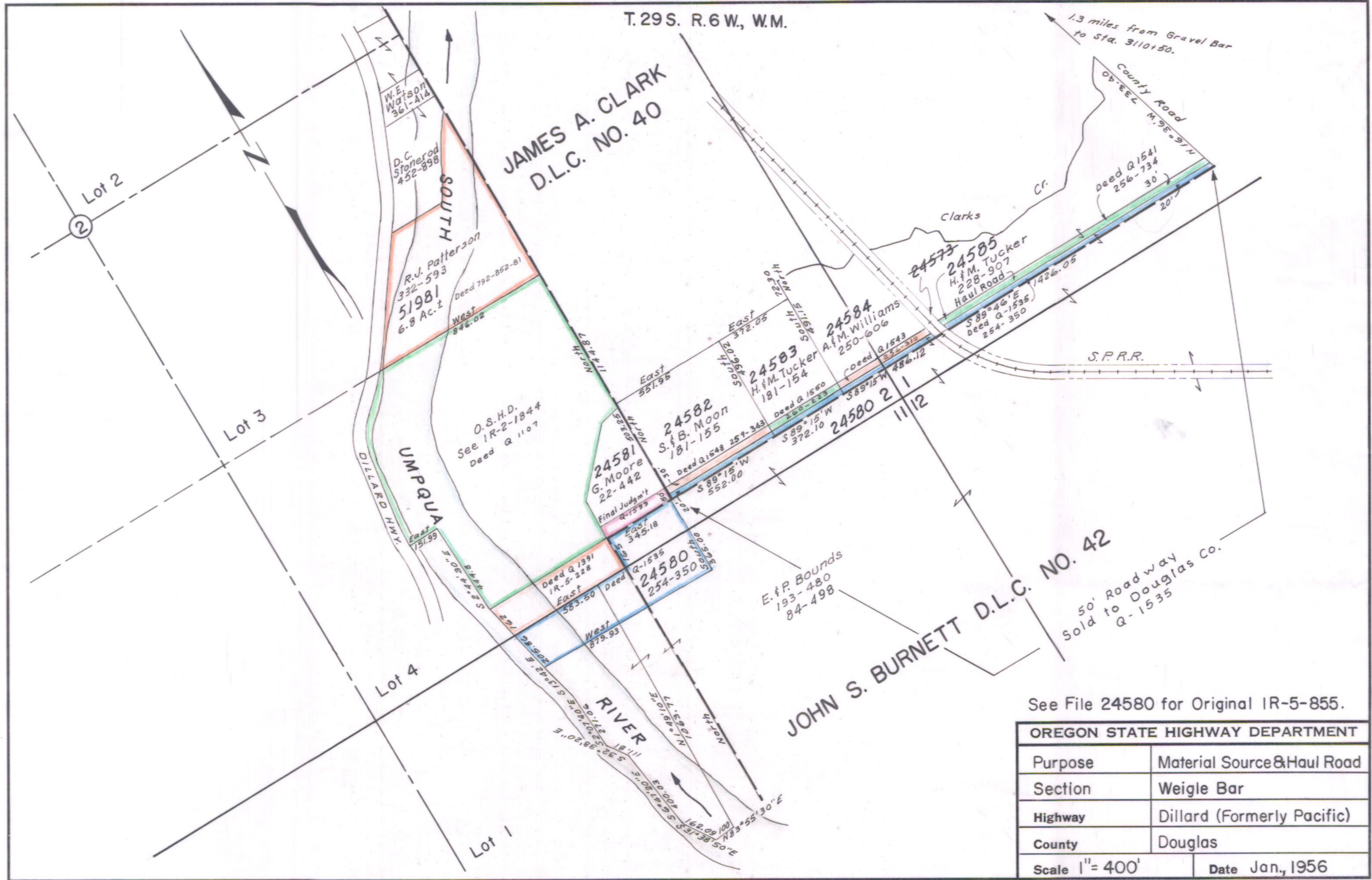


T.29S. R.6 W., W.M.



See File 24580 for Original IR-5-855.

OREGON STATE HIGHWAY DEPARTMENT	
Purpose	Material Source & Haul Road
Section	Weigle Bar
Highway	Dillard (Formerly Pacific)
County	Douglas
Scale 1" = 400'	Date Jan., 1956

Rev. April, 1956  
May, 1981

3B-11-8  
IR-2-1844  
IR-5-228