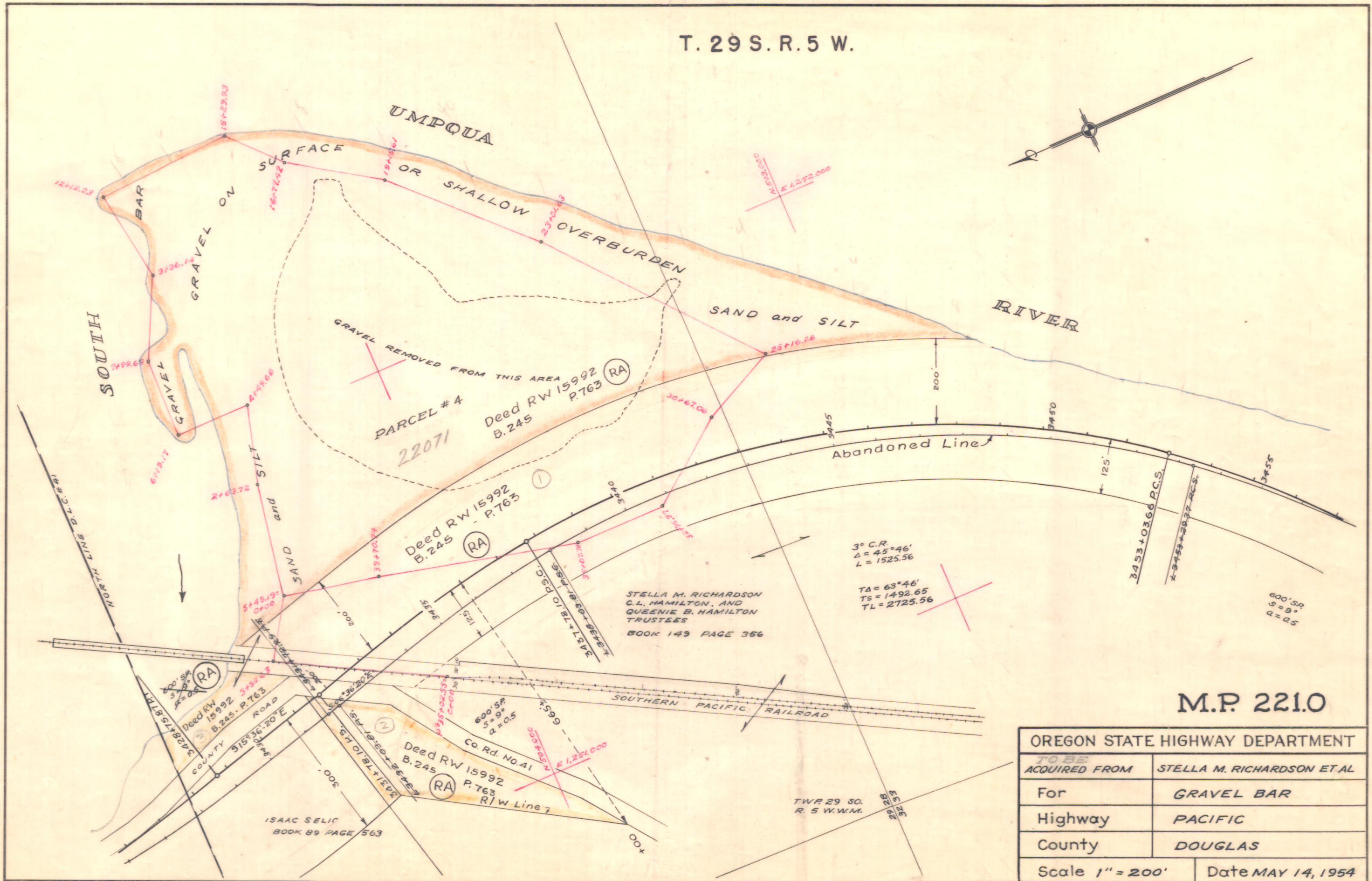


T. 29 S. R. 5 W.



M.P. 221.0

OREGON STATE HIGHWAY DEPARTMENT	
TO BE ACQUIRED FROM	STELLA M. RICHARDSON ET AL
For	GRAVEL BAR
Highway	PACIFIC
County	DOUGLAS
Scale 1" = 200'	Date MAY 14, 1954