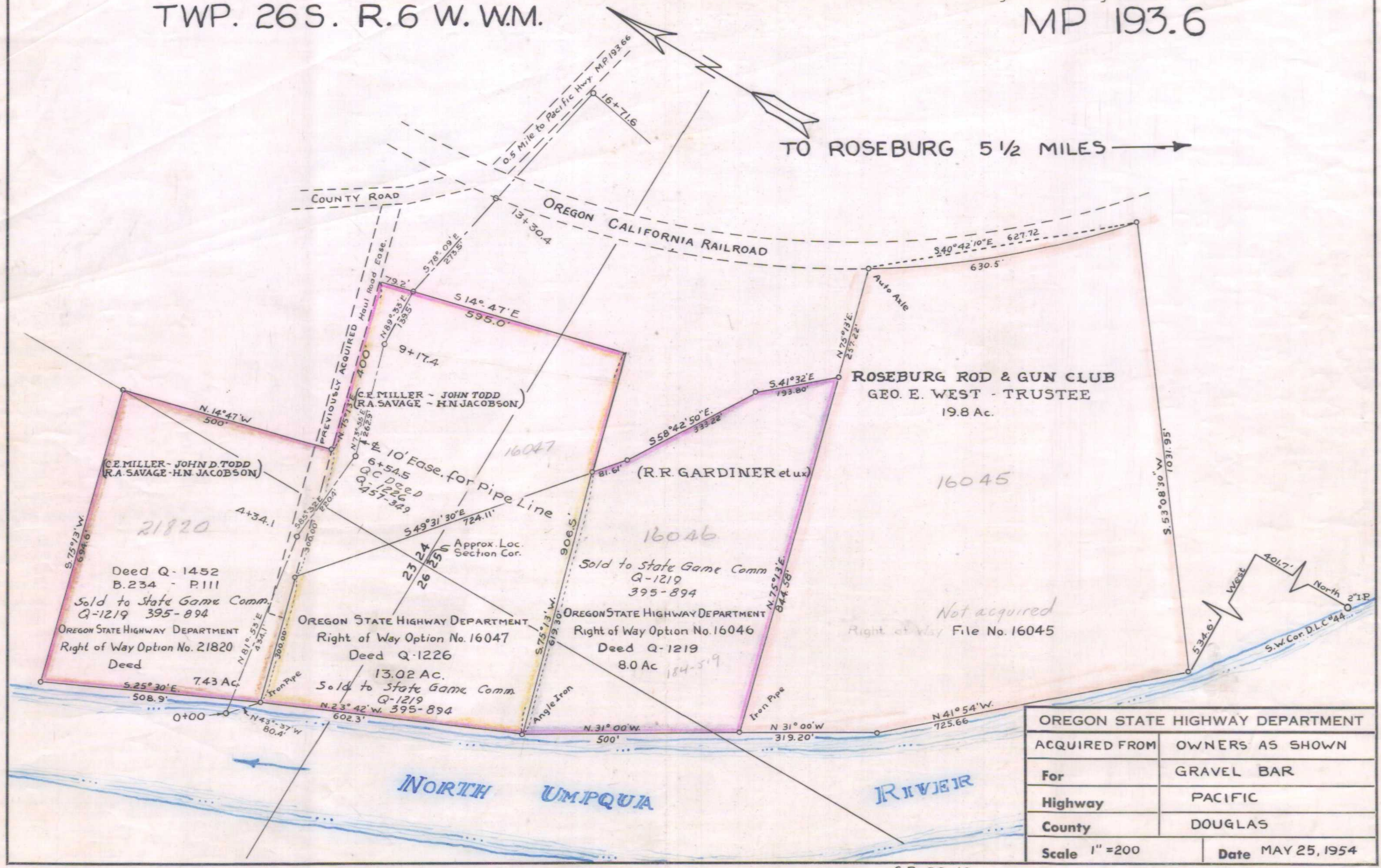


TWP. 26 S. R. 6 W. W.M.

Original tracing in File Q-1226

MP 193.6

TO ROSEBURG 5 1/2 MILES



OREGON STATE HIGHWAY DEPARTMENT	
ACQUIRED FROM	OWNERS AS SHOWN
For	GRAVEL BAR
Highway	PACIFIC
County	DOUGLAS
Scale 1" = 200	Date MAY 25, 1954

6B-29-16
3B-11-12
7B-7-10

COMPOSITE OF IR-5-526 & IR-2-2512

Winchester Gravel Bar