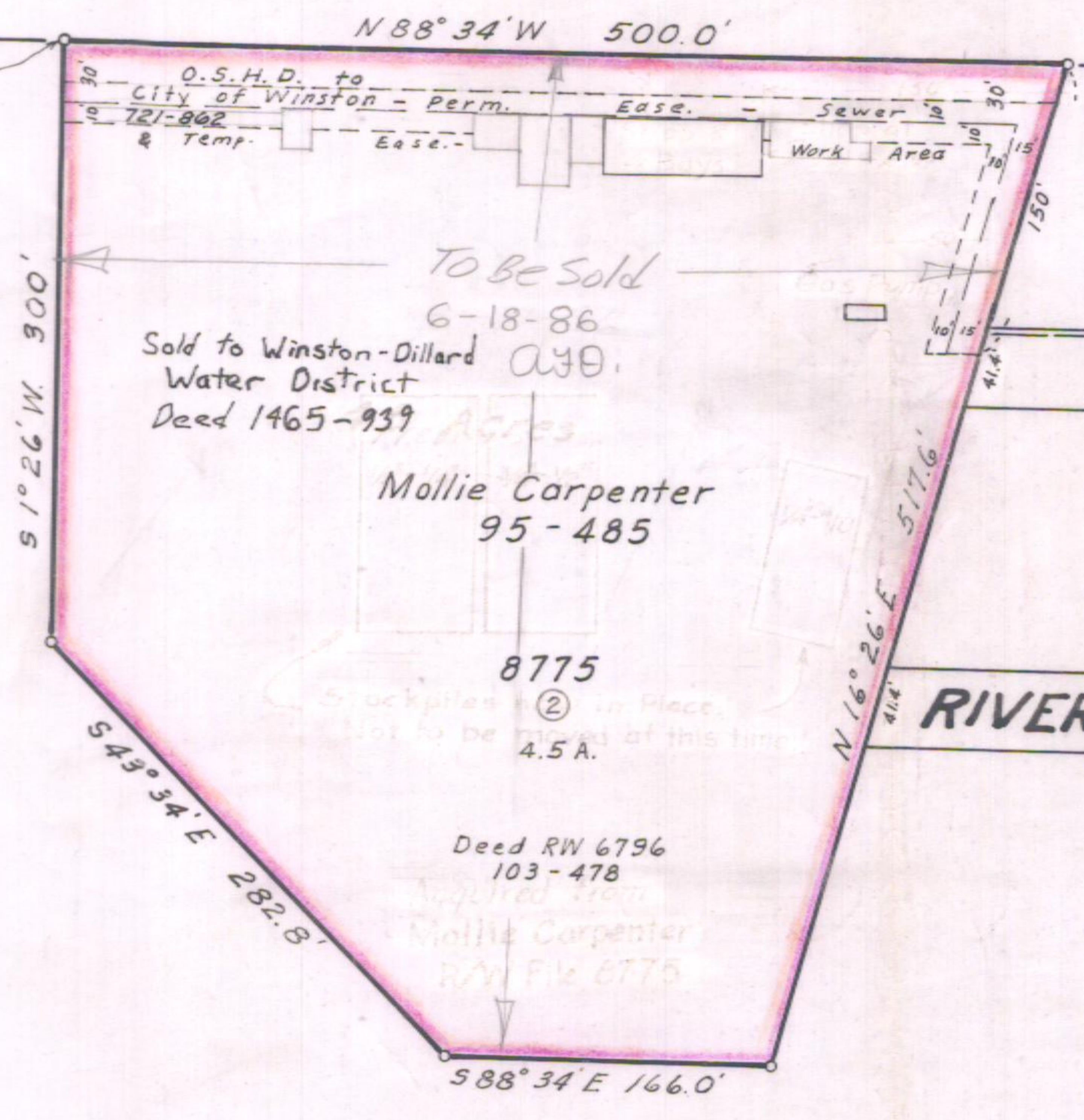


SEC. 21, T28 S, R 6 W, WM

Point of Beginning  
#36' No & 3765' We. of  
S.E. Cor. of Sec. 21



SOUTH UMPQUA RIVER

SE 1/4 of SW 1/4

OREGON STATE HIGHWAY DEPARTMENT	
Acquired from	Mollie Carpenter
For	Winston Maint. Hdqrs.
Highway	Pacific Dillard #335
County	Douglas
Scale 1" = 100'	Date Dec. 1941

See 5B-30-16 for Parcel 1  
9B-7-5

Rev. Mar. 1953  
Rev. July 1978