

Note:
2.15 miles via county roads
62 A and 62 to Curtin at mile
Post 155.5 Pacific Highway



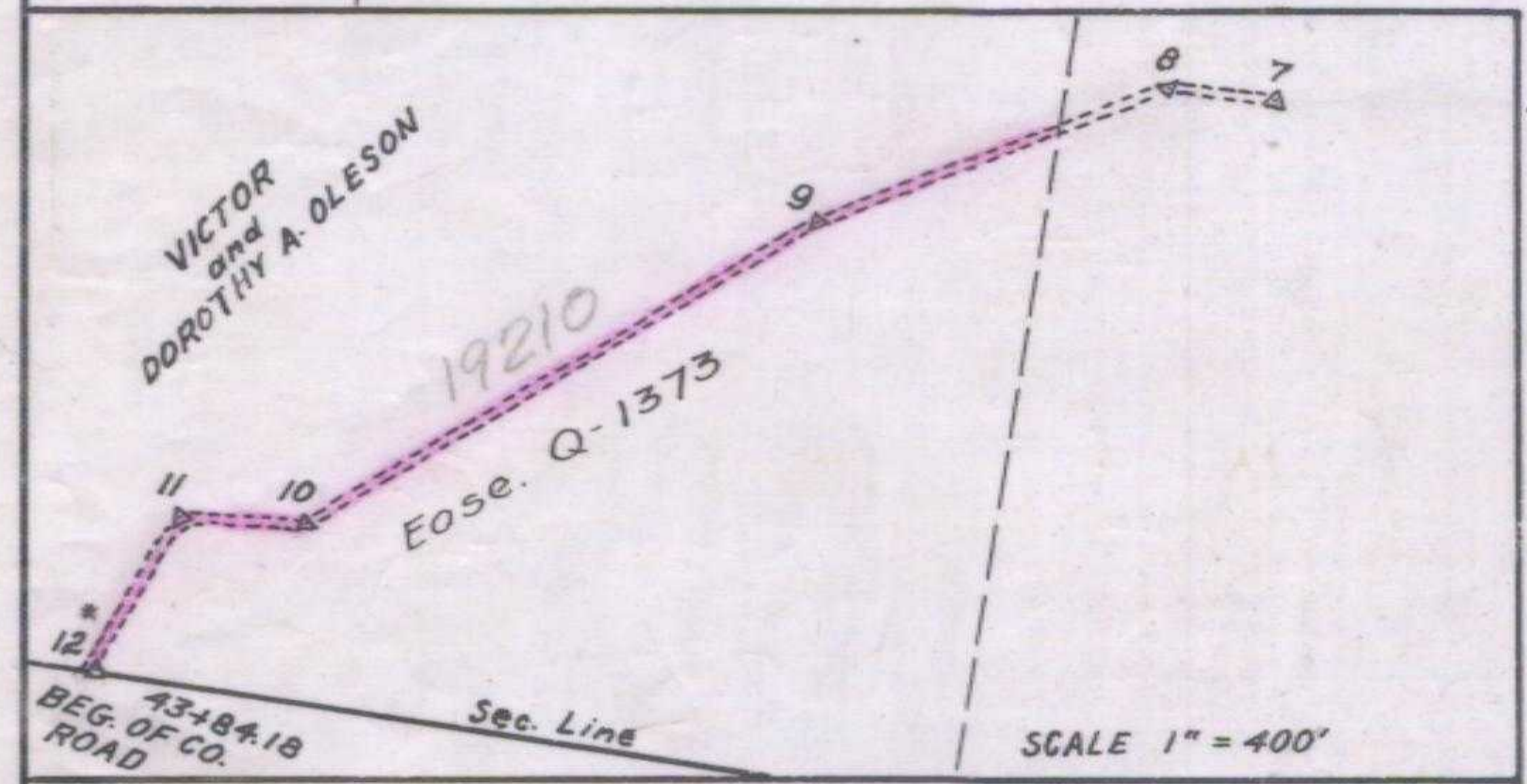
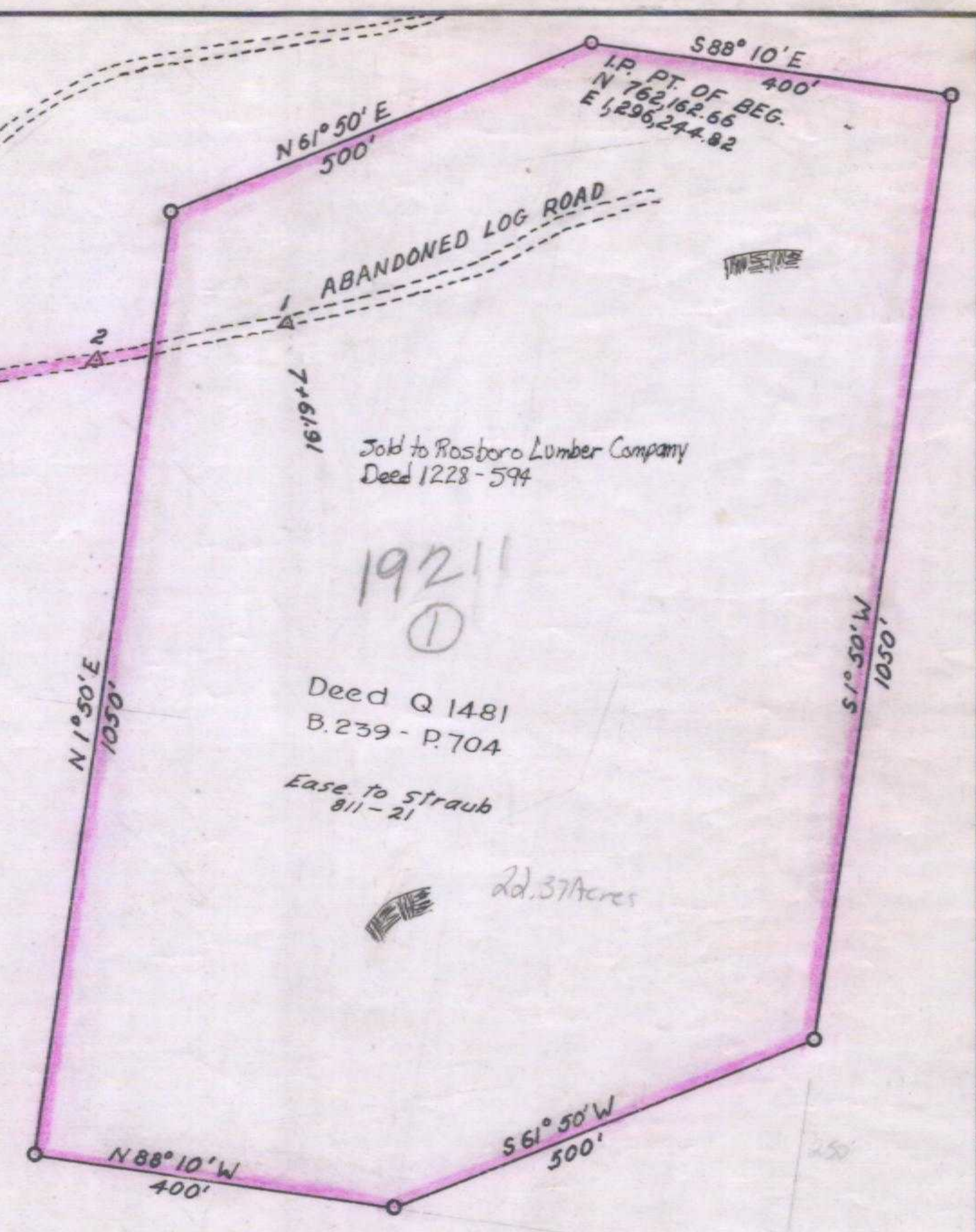
T 21 S, R 4 W

R. B. Bewley et ux
~~ELMO M. and THELMA P. SUMMERS~~

VICTOR
and
DOROTHY A. OLESON

19211 ②
40 foot Easement for Haul Road

LESLIE A. and WANDA CRANE



SCALE 1" = 400'

OREGON COORDINATE SYSTEM
SOUTH ZONE

| ACCESS ROAD | | | | | |
|-------------|-----------------|--------|-----|-----------------|--------|
| STA | GRID BEARING | DIST | STA | GRID BEARING | DIST |
| 1 | S 72° 25' 42" W | 213.94 | 7 | S 89° 21' 27" W | 169.27 |
| 2 | S 75° 40' 57" W | 151.76 | 8 | S 60° 21' 57" W | 529.83 |
| 3 | S 58° 57' 57" W | 396.21 | 9 | S 51° 52' 27" W | 844.80 |
| 4 | S 65° 22' 57" W | 416.61 | 10 | S 85° 49' 57" W | 185.65 |
| 5 | S 63° 26' 27" W | 388.13 | 11 | S 21° 43' 57" W | 251.32 |
| 6 | S 83° 23' 27" W | 320.37 | 12* | | |

21/22
28/27
LARGE ROCK MARKED "X"
N 760,066.20
E 1,295,199.14

| OREGON STATE HIGHWAY DEPARTMENT | |
|---------------------------------|----------------|
| | To be acquired |
| For | QUARRY |
| Highway | PACIFIC |
| County | DOUGLAS |
| Scale 1" = 200' | Date MAY 1952 |

3B-11-11 (400') Rev. Feb. 1955

(Bear Creek Quarry) Crane Quarry