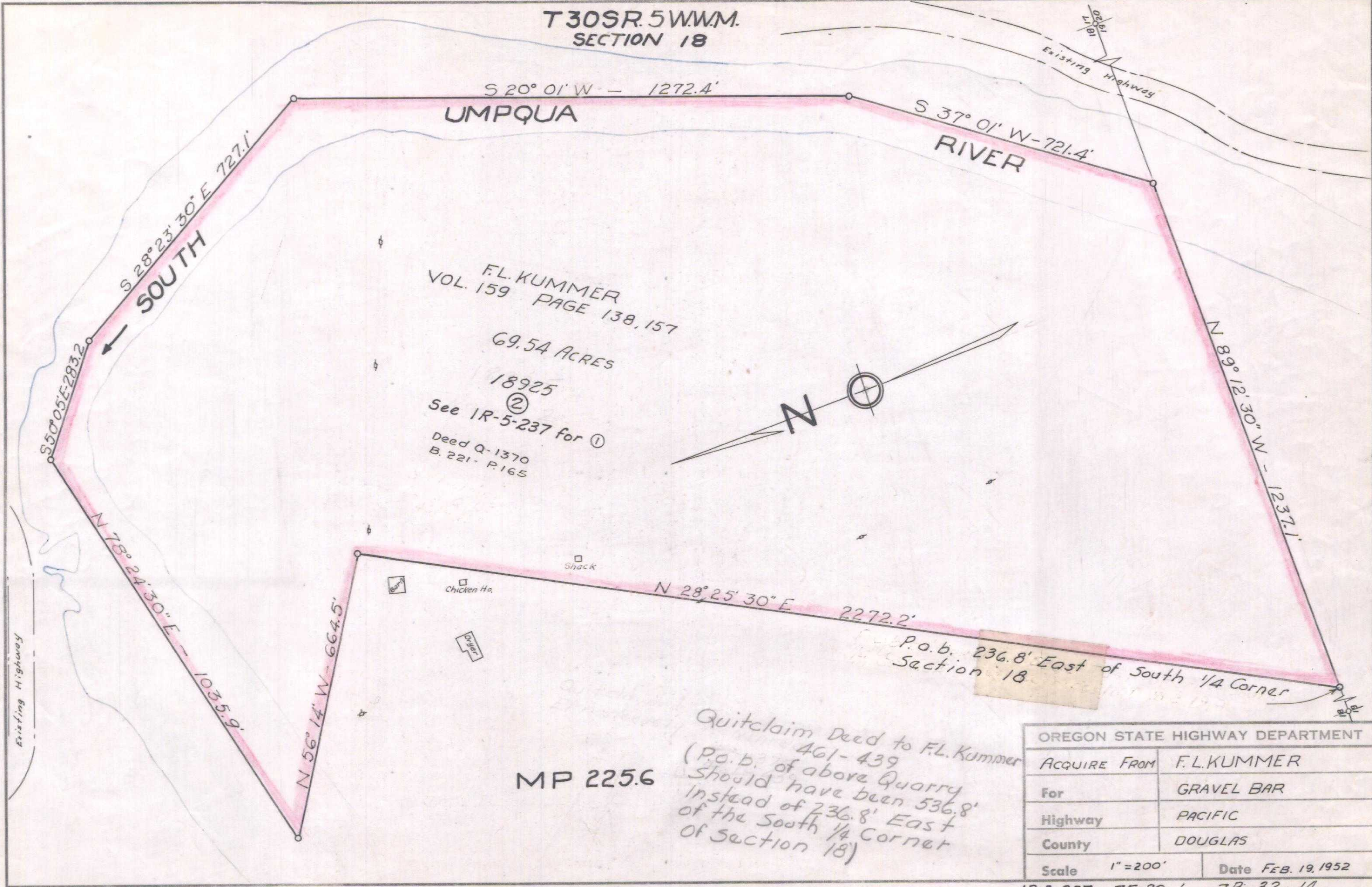


T30SR.5W.W.M.  
SECTION 18



F.L. KUMMER  
VOL. 159 PAGE 138, 157  
69.54 ACRES  
18925  
②  
See IR-5-237 for ①  
Deed Q-1370  
B. 221 - P. 165

MP 225.6

Quitclaim Deed to F.L. Kummer  
461-439  
(P.O.B. of above Quarry  
Should have been 536.8'  
Instead of 236.8' East  
of the South 1/4 Corner  
of Section 18)

P.O.B. 236.8' East of South 1/4 Corner  
Section 18

OREGON STATE HIGHWAY DEPARTMENT	
ACQUIRE FROM	F.L. KUMMER
For	GRAVEL BAR
Highway	PACIFIC
County	DOUGLAS
Scale	1" = 200'
Date	FEB. 19, 1952

IR-5-237 7F-20-1 7B-32-14