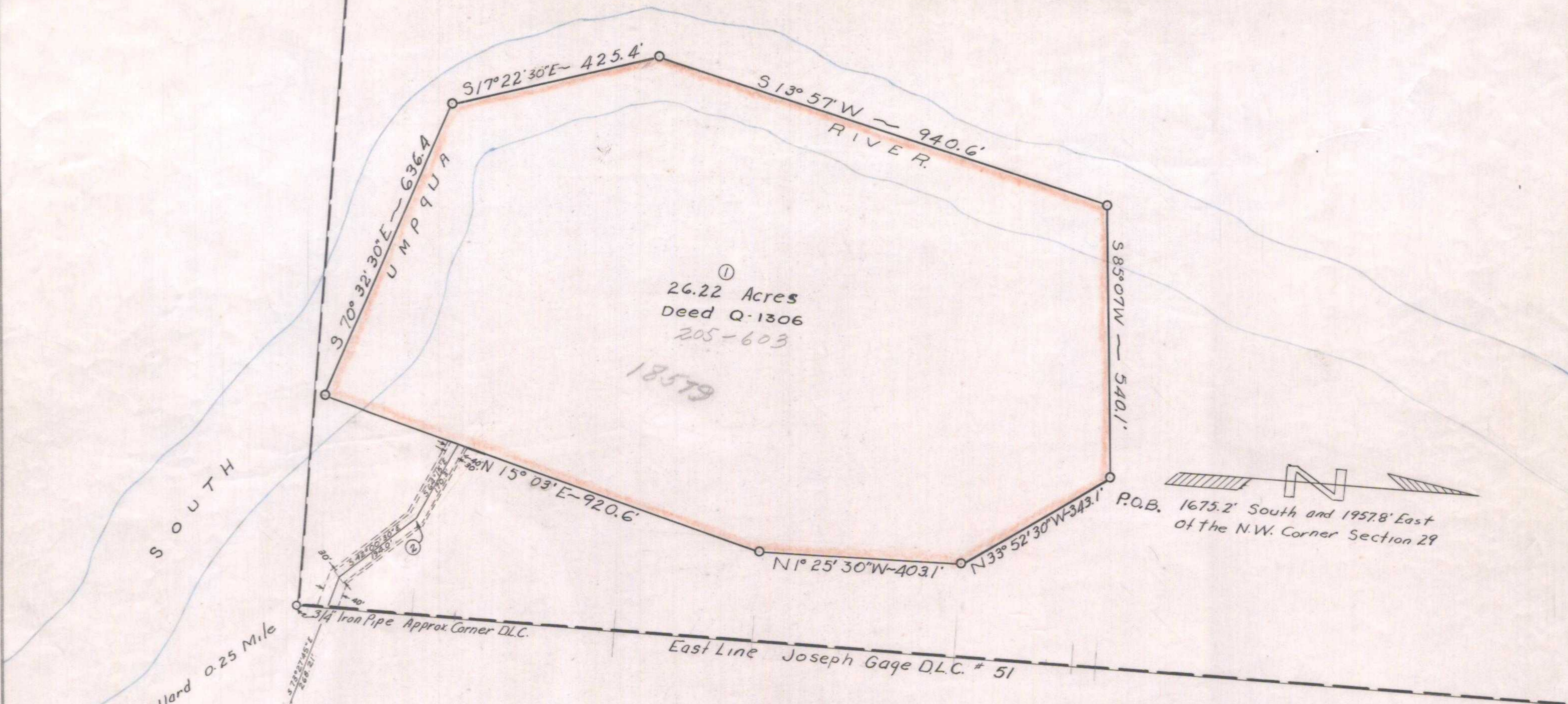


Vol. 109, P. 41

T.28 S. R. 6 W. W. M.
W 1/2 SECTION 29



To Dillard 0.25 Mile

See 38-11-8 for continuation of Easement Under File No. 47157

P.O.B. 1675.2' South and 1957.8' East of the N.W. Corner Section 29

OREGON STATE HIGHWAY DEPARTMENT	
Acquire	Paul I Rummell
For	Gravel Bar Site
Highway	Coos Bay-Roseburg
County	Douglas County
Scale 1" = 200'	Date Nov. 9 1951