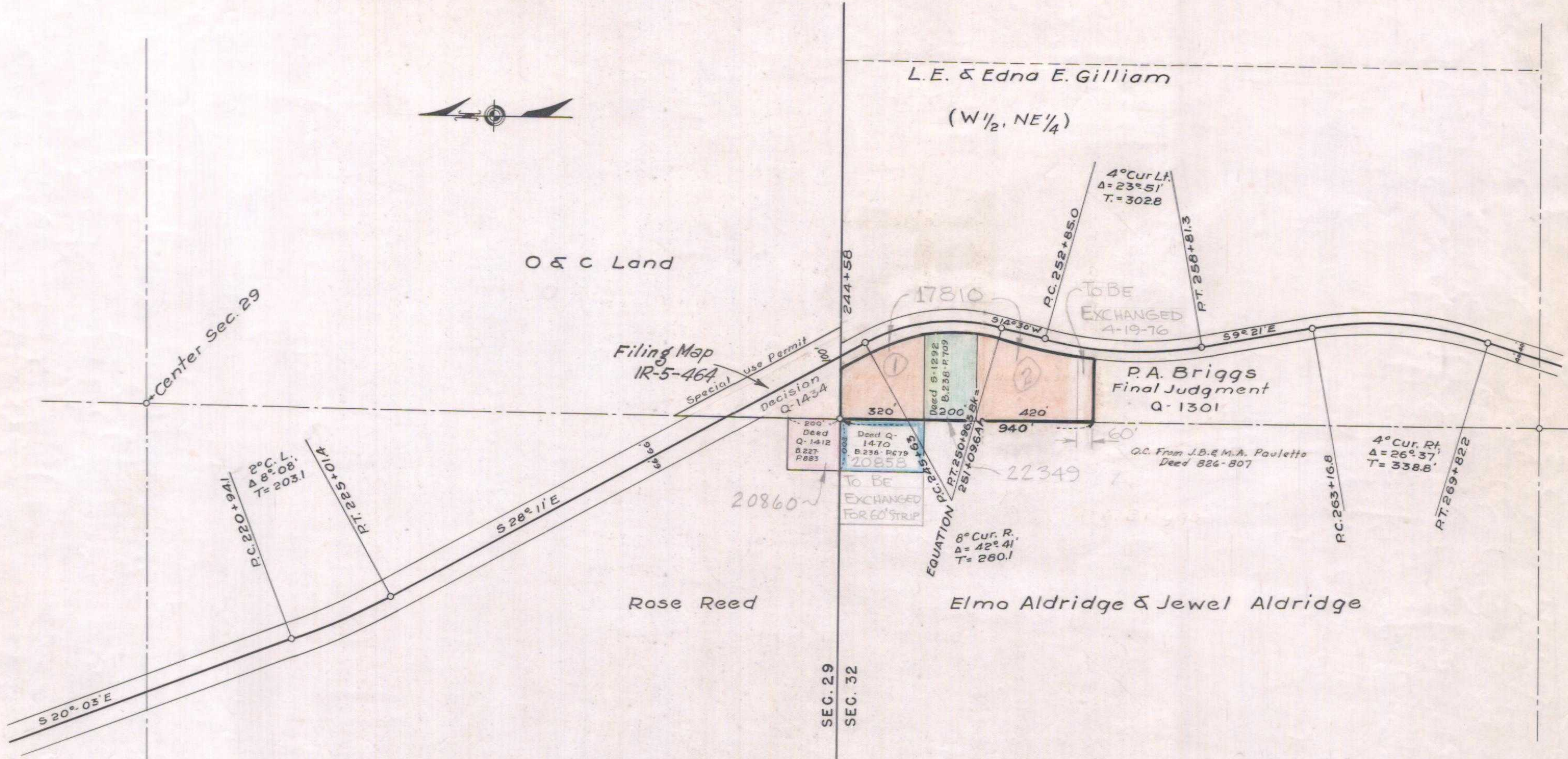


T. 31 S. R. 1 W.



M.P. 32.74

OREGON STATE HIGHWAY DEPARTMENT	
Acquired From	L.E. & Edna E. Gilliam
For	quarry & stock pile sites
Highway	Tiller-Trail
County	Douglas
Scale 1" = 400'	Date July, 1951

68-27-6

Revised July 1953  
Sept. 1954