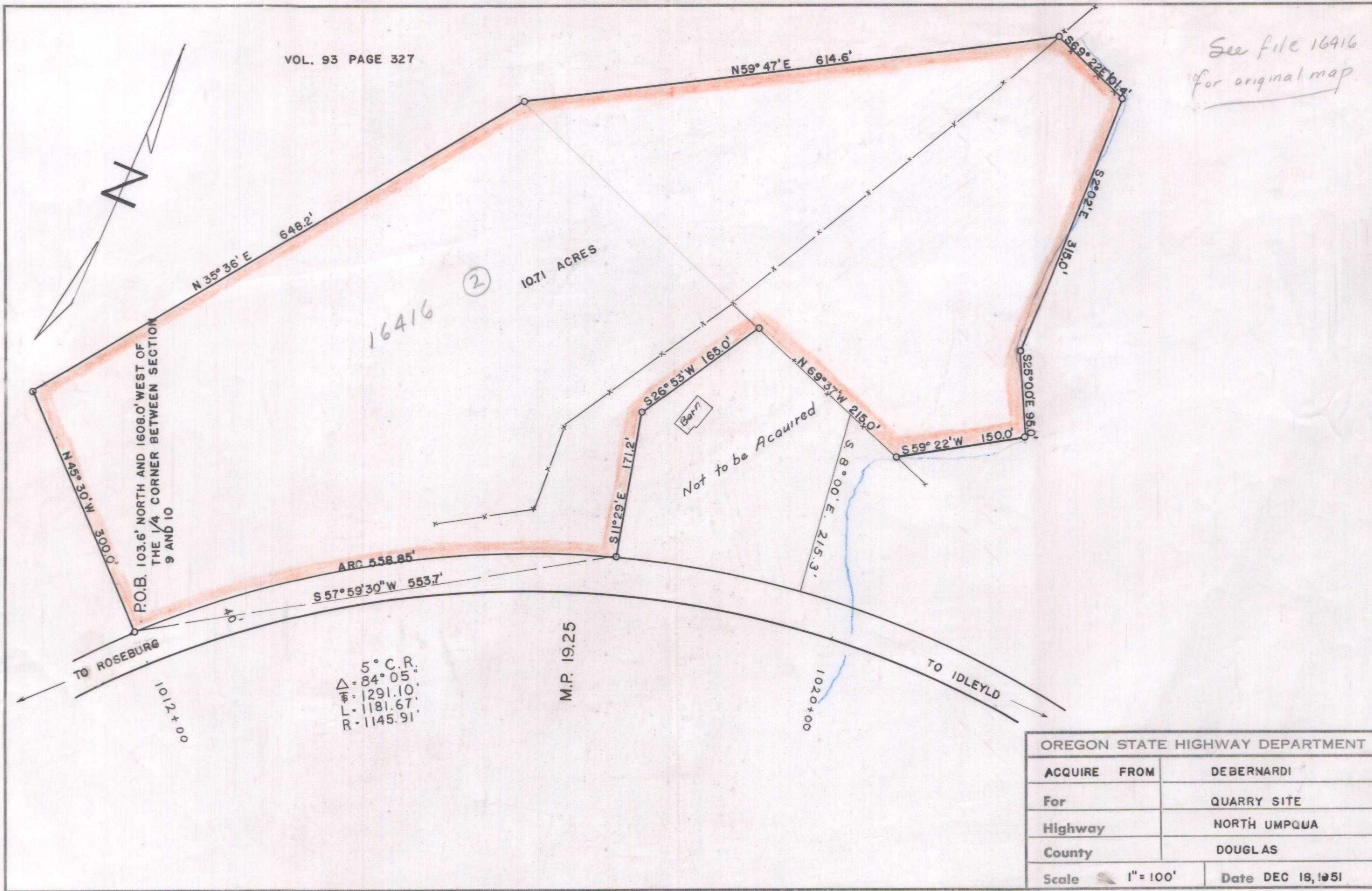


VOL. 93 PAGE 327

See file 16416  
for original map



P.O.B. 103.6' NORTH AND 1608.0' WEST OF  
THE 1/4 CORNER BETWEEN SECTION  
9 AND 10

16416 (2) 10.71 ACRES

Barn  
Not to be Acquired

5° C.R.  
Δ = 84° 05'  
F = 1291.10'  
L = 1181.67'  
R = 1145.91'

M.P. 19.25

TO ROSEBURG

TO IDLEYLD

OREGON STATE HIGHWAY DEPARTMENT	
ACQUIRE FROM	DEBERNARDI
For	QUARRY SITE
Highway	NORTH UMPQUA
County	DOUGLAS
Scale 1" = 100'	Date DEC 18, 1951

58-17-17 (100')