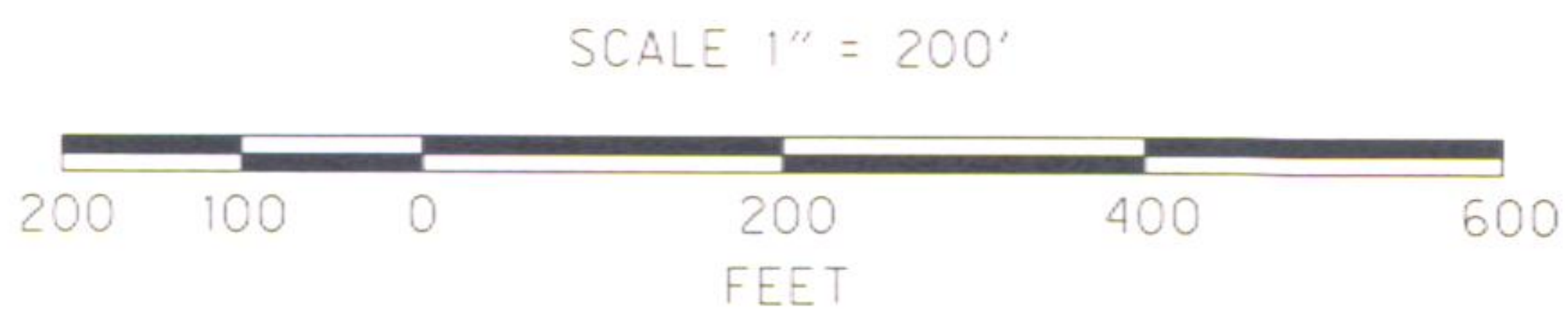
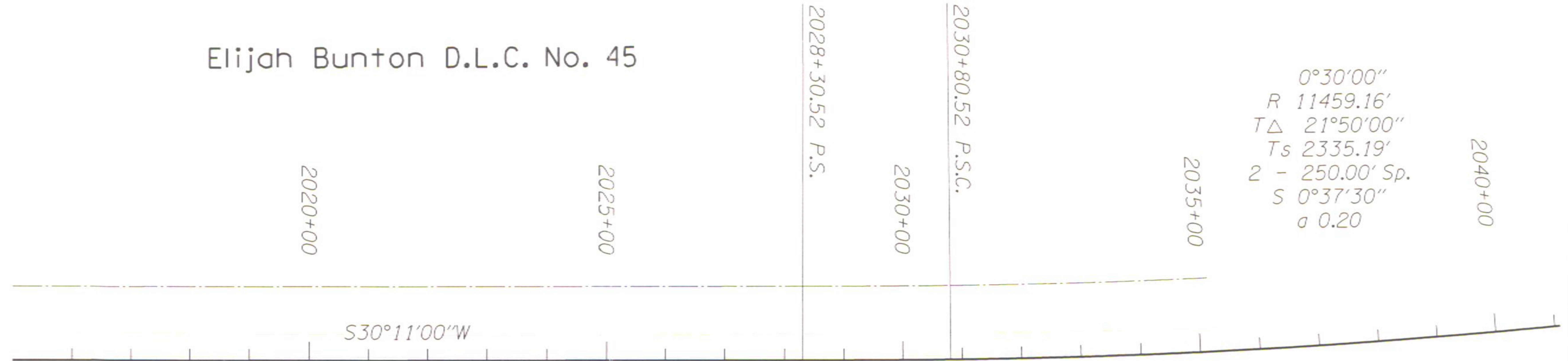


NW 1/4 SEC. 7, T. 26 S., R. 5 W., W.M.

DRAWING 1R-4-1050
SEE 8B-26-7 FOR PRIOR RW

Elijah Bunton D.L.C. No. 45

0°30'00"
R 11459.16'
TΔ 21°50'00"
Ts 2335.19'
2 - 250.00' Sp.
S 0°37'30"
a 0.20



R/W ENGINEERING
ORIGINAL
DO NOT REMOVE FROM FILE

OREGON DEPARTMENT OF TRANSPORTATION



Section	Wilbur Mitigation Site		
Highway	Pacific	Scale	1" = 200'
County	Douglas	Date	Nov., 2006
Purpose	Entire Take	Proj. No.	6012

REVISION HISTORY

DATE	NAME	DESCRIPTION

\\Sedat\Ar\wmaps\Region3\DOUGLAS\1R-4-1050_15WilburMitSite\1R-4-1050.dgn 11/30/2006 Murshall Worjsttuff, 0001