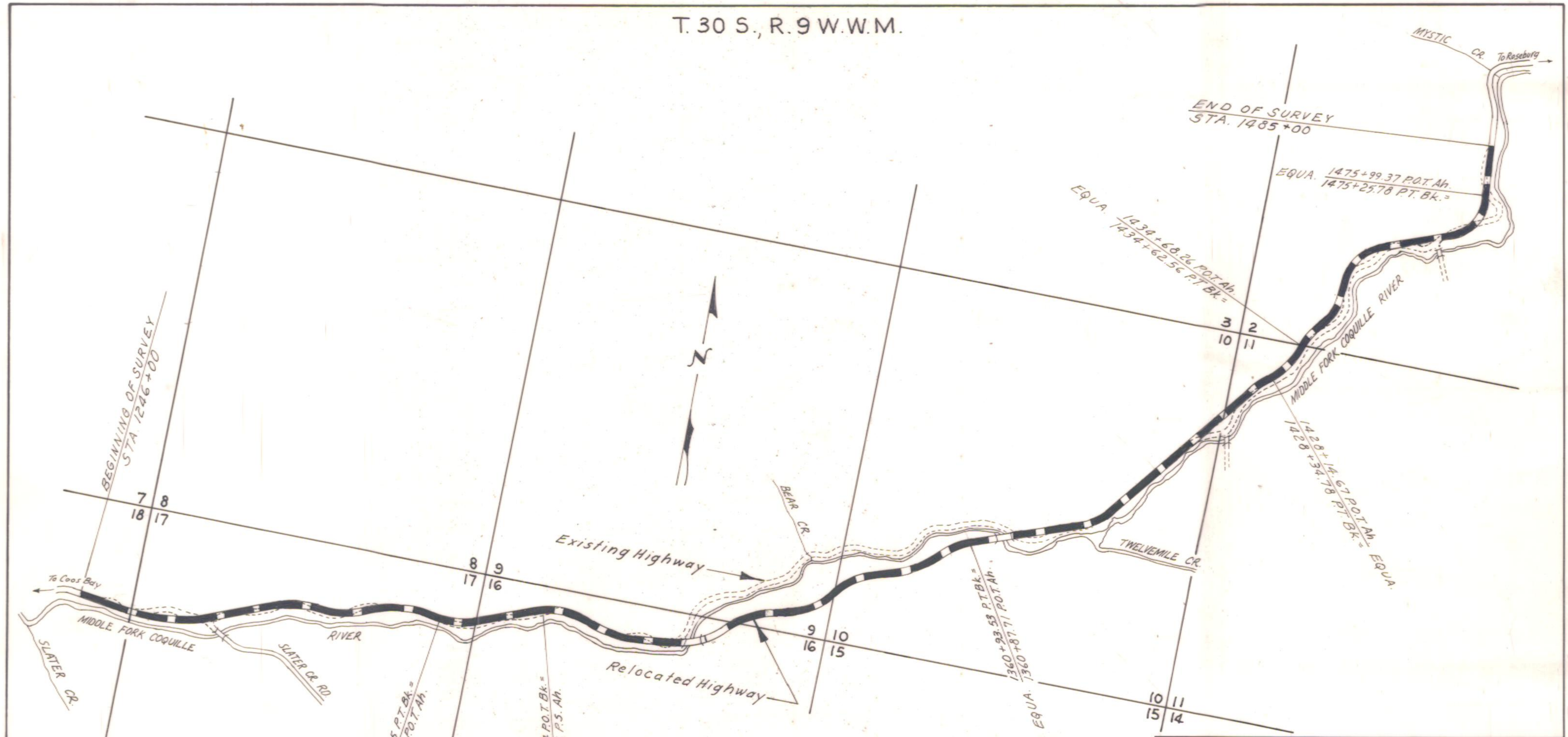


T. 30 S., R. 9 W.W.M.



OREGON STATE HIGHWAY DIVISION
 SURVEY APPROVAL MAP
SLATER CR. - MYSTIC CR. SECT.
 COOS BAY-ROSEBURG HWY.
 DOUGLAS COUNTY

PUBLIC HEARING	Aug. 29, 1974
THROUGHWAY RESOLUTION ADOPTED	None Required
ACCESS CONTROL	Limited

APPROVED: 6-11, 1976
E. J. Hunter
 DEPUTY STATE HIGHWAY ENGINEER

SCALE: 1" = 1350' ± DATE: June, 1976
 FOR DETAILS SEE DRG. NO.
 9B-13-5 9B-13-6

4.73 Mi.

Adopted by Comm. 6-29-76