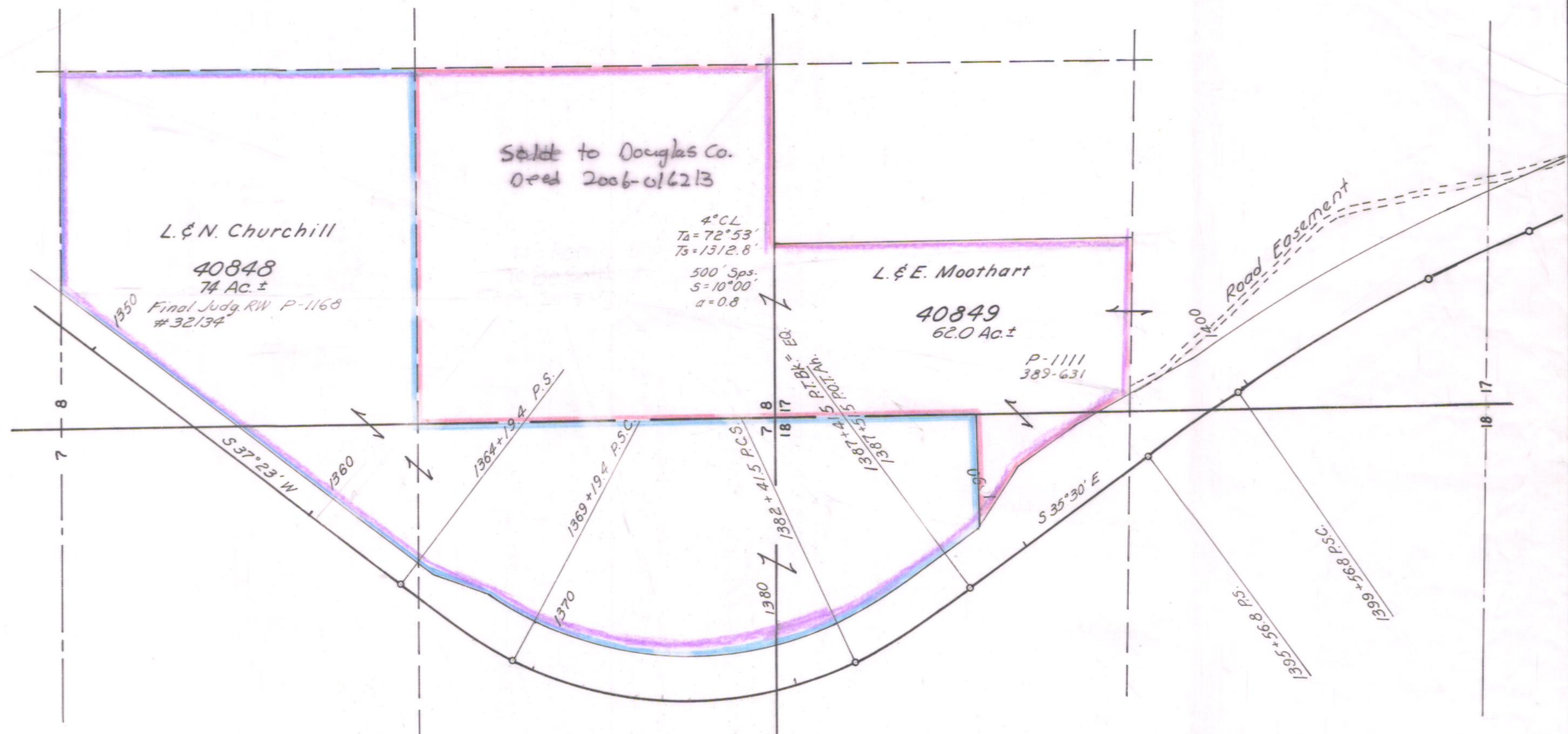
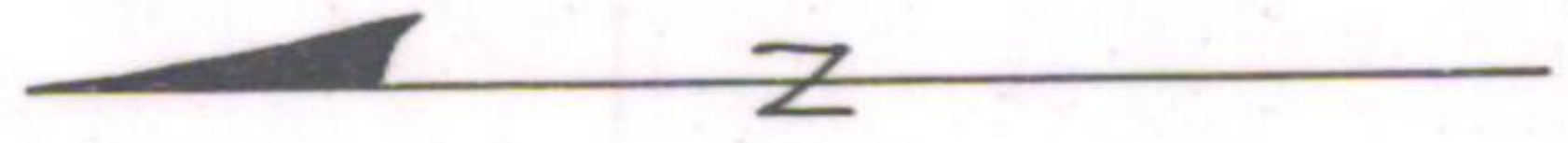


T.24 S., R.5 W. W.M.



Sold to Douglas Co.
Deed 2006-016213

L. & N. Churchill
40848
74 Ac.±
Final Judg. RW P-1168
#32134

L. & E. Moothart
40849
62.0 Ac.±

P-1111
389-631

OREGON STATE HIGHWAY DEPARTMENT	
From	As Shown
For	Scenic Strip
Highway	Pacific
County	Douglas
Scale 1" = 400'	Date Jan., 1967

5B-29-4 2B-3-18
6B-29-15 2B-11-12