

P-4

P-4

DRG. NO. IR-3-1579

T. 27 S., R. 6 W., W.M.

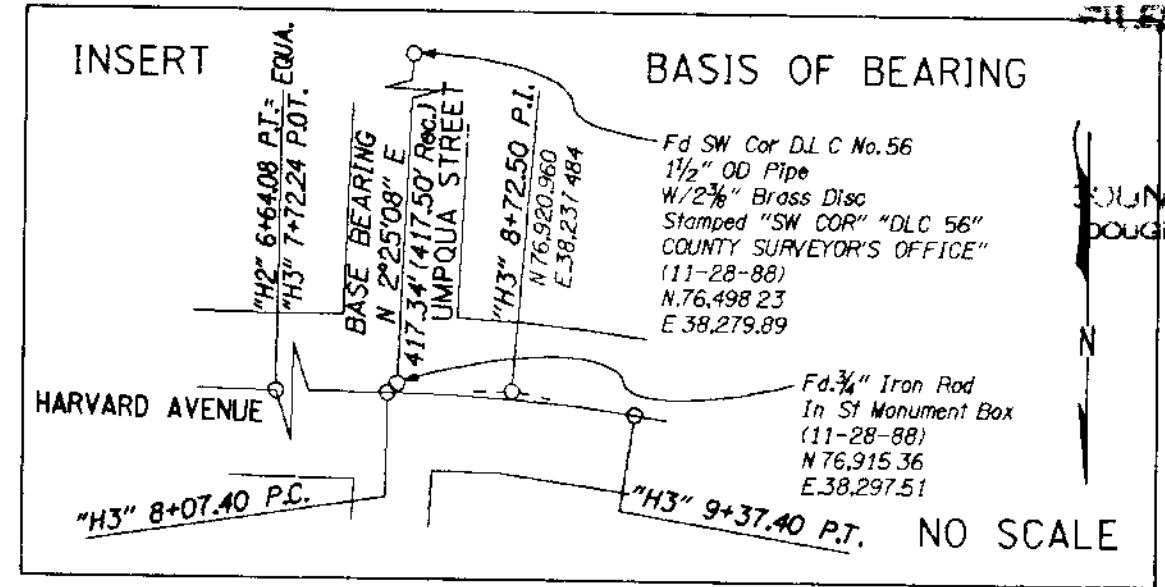
**PRELIMINARY**  
Subject to Change

**D.L.C. NO. 56**  
**JEREMIAH HUNTLEY**

"H2"  
(Record)  
2° C.L.  
Δ 4°38'50"  
T 116.24'

Commercial Investments Co.  
582-124

Fd SW Cor. D.L.C. No. 56  
1 1/2" OD Pipe  
W/2 7/8" Brass Disc  
Stamped "SW COR" "DLC 56"  
COUNTY SURVEYOR'S OFFICE  
(11-28-88)  
N 76,498.23  
E 38,279.89



N 89°03' W  
SEE 9B-6-16

N 84°37' W

N 89°15'50" W

N 81°27'50" W

"H2" 2+09.10 P.C.

"H2"  
(Record)  
2° C.R.  
Δ 4°26'  
T 110.89'

"H2" 4+30.77 P.T.

"H2" 5+47.96 P.I.

H.E. Kruse et al  
290-233

J.E. & A.F. Hopkins  
899-748

**PRELIMINARY**  
Subject to Change  
**A.J. BELLOWS**  
FIRST ADDITION  
TO WEST ROSEBURG

BEARINGS BASED ON OREGON STATE HIGHWAY DIVISION SURVEY. SEE DRG. NO. 9B-6-16, DATED JUNE, 1969 .  
ASSUMED COORDINATES

THIS DRAWING WAS PREPARED FROM AN OREGON STATE HIGHWAY DIVISION SURVEY. THE SURVEY TRANSIT NOTES ARE RETAINED IN THE FILES AS FIELD BOOK NUMBER 2909 .

Fd 5/8" Iron Rod  
W/1 1/2" Aluminum Cap  
Stamped "SHANER ENGR"  
(8-4-88)  
N 77,054.94  
E 38,323.20

"H3"  
(Record)  
6° C.R.  
Δ 7°48'  
T 65.10'

OREGON STATE HIGHWAY DIVISION	
Purpose	RIGHT OF WAY
Section	HARVARD AVE. AT UMPOUA ST. (ROSEBURG)
Highway	HARVARD AVENUE (CITY STREET)
County	DOUGLAS
Scale : 1" = 50'	Date : January, 1989

9B-6-16

13-JAN-1989

ZF1:1370,101HARVARD88.DGN:1

σ  
4