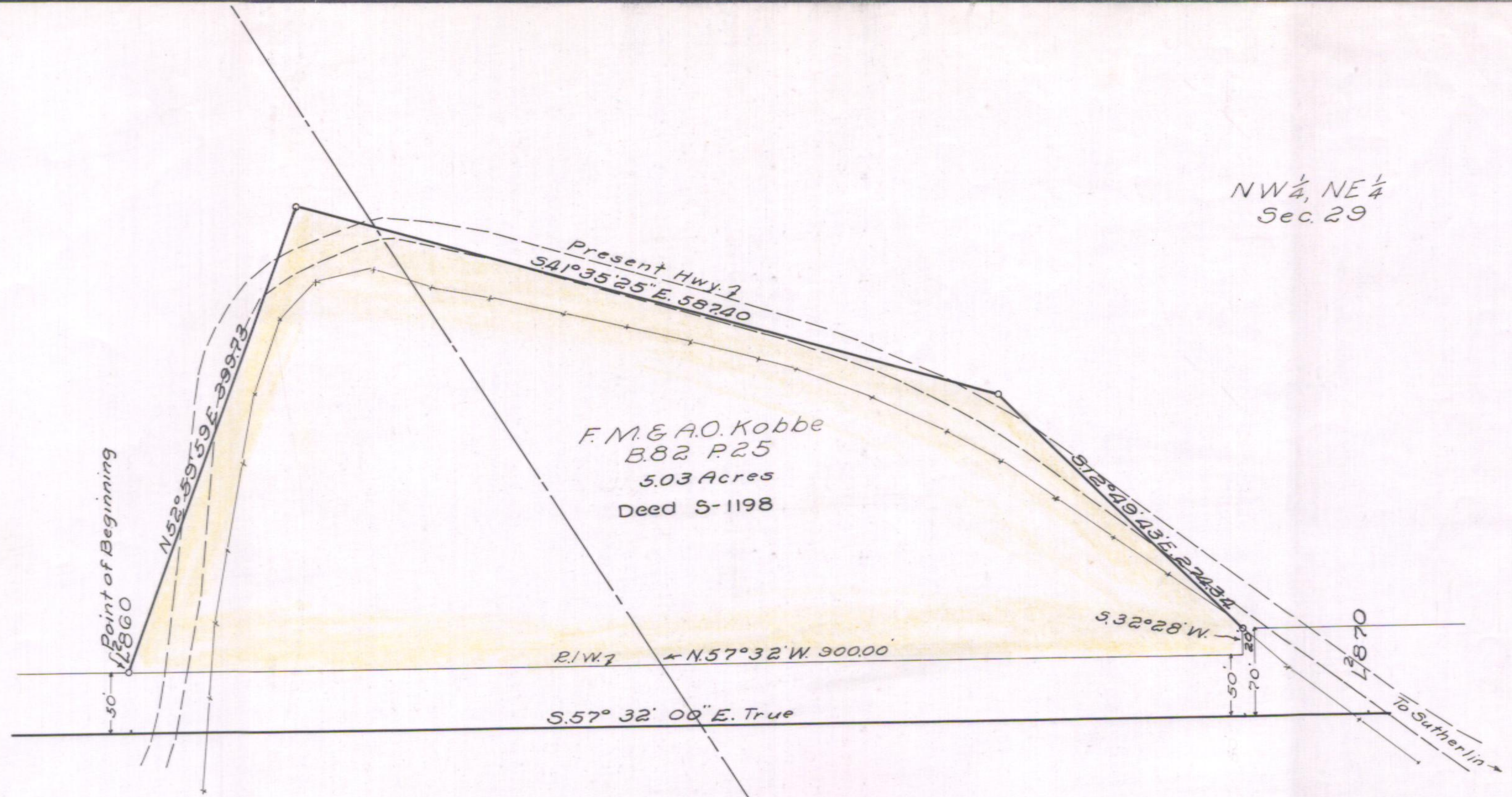


14218

NW 1/4, NE 1/4
Sec. 29



Sec. 29 T. 24 S. R. 6 W. W. M.

OREGON STATE HIGHWAY DEPARTMENT	
For	Stock Pile Site
Highway	Elkton-Sutherlin
County	Douglas
Scale 1" = 100'	Date Oct. 1947

6B-24-15