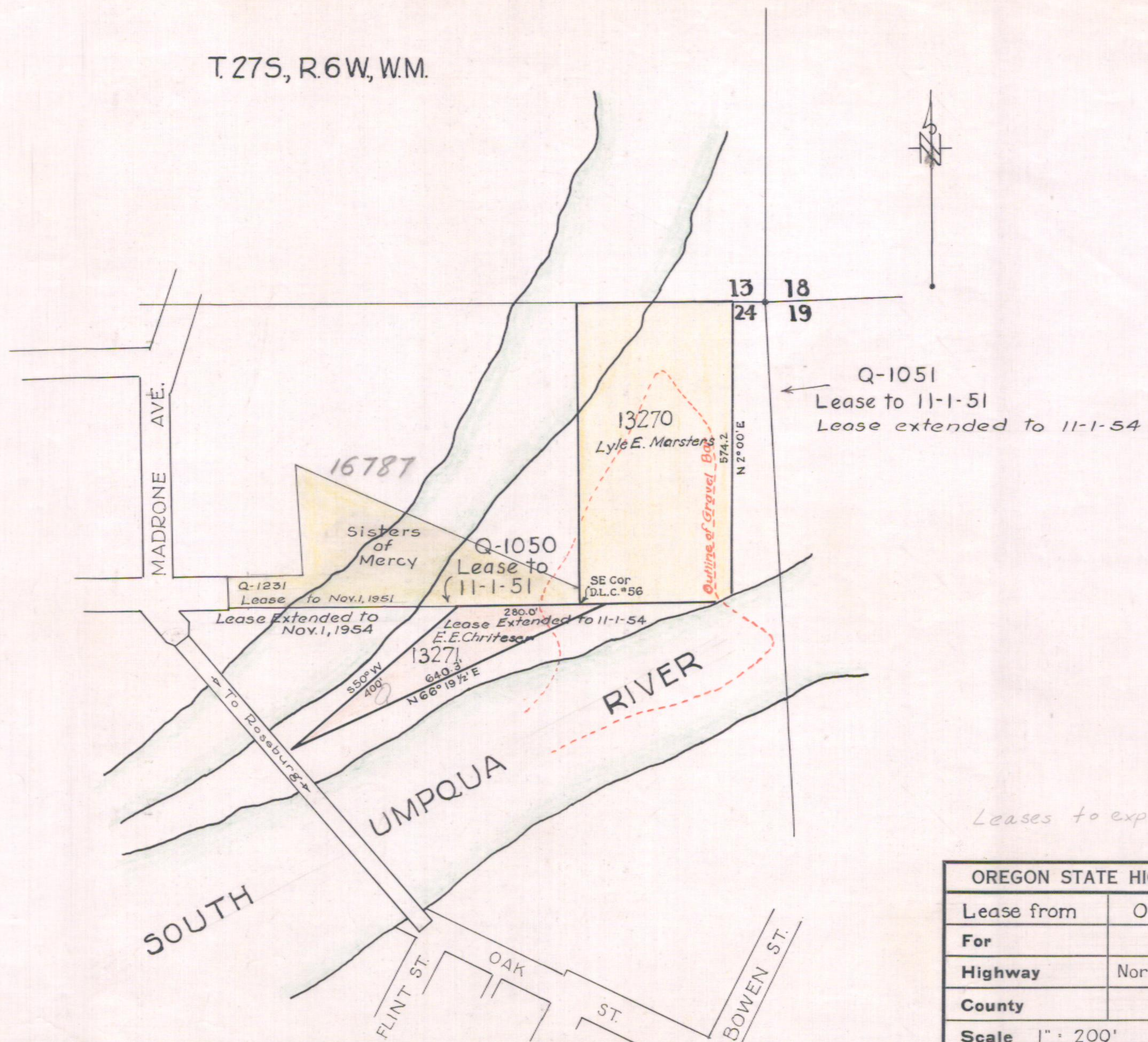


T.27S, R.6W, W.M.



Q-1051
Lease to 11-1-51
Lease extended to 11-1-54

Leases to expire 11-1-54

OREGON STATE HIGHWAY DEPARTMENT	
Lease from	Ownerships Shown
For	Gravel Pit
Highway	North Umpqua County Rd.
County	Douglas
Scale 1" = 200'	Date Dec. 1946