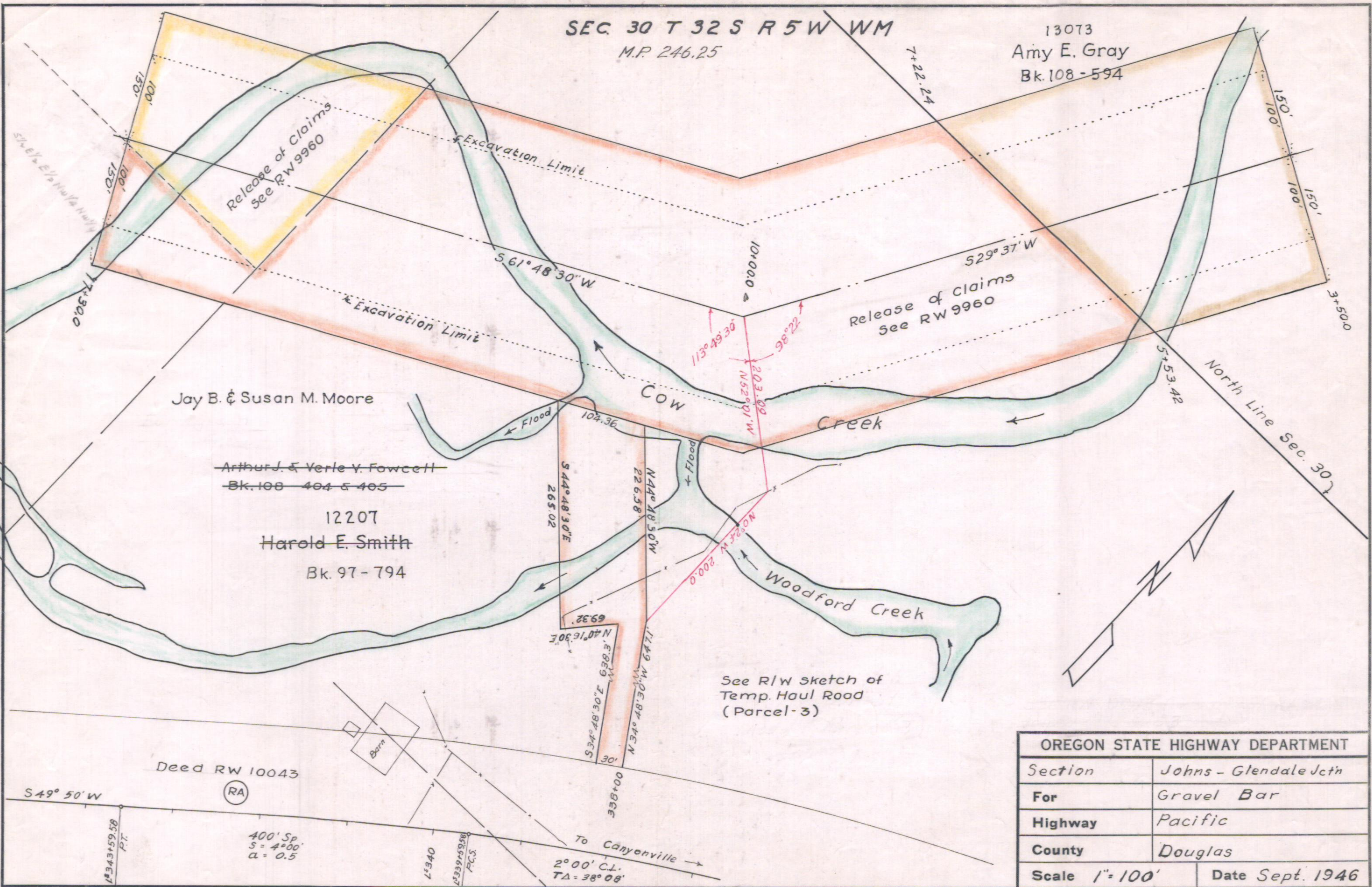


SEC. 30 T 32 S R 5 W WM  
M.P. 246.25

13073  
Amy E. Gray  
Bk. 108-594



Jay B. & Susan M. Moore

Arthur J. & Verle V. Fowcell  
Bk. 108 404 & 405

12207  
Harold E. Smith  
Bk. 97-794

OREGON STATE HIGHWAY DEPARTMENT	
Section	Johns - Glendale Jctn
For	Gravel Bar
Highway	Pacific
County	Douglas
Scale 1" = 100'	Date Sept. 1946