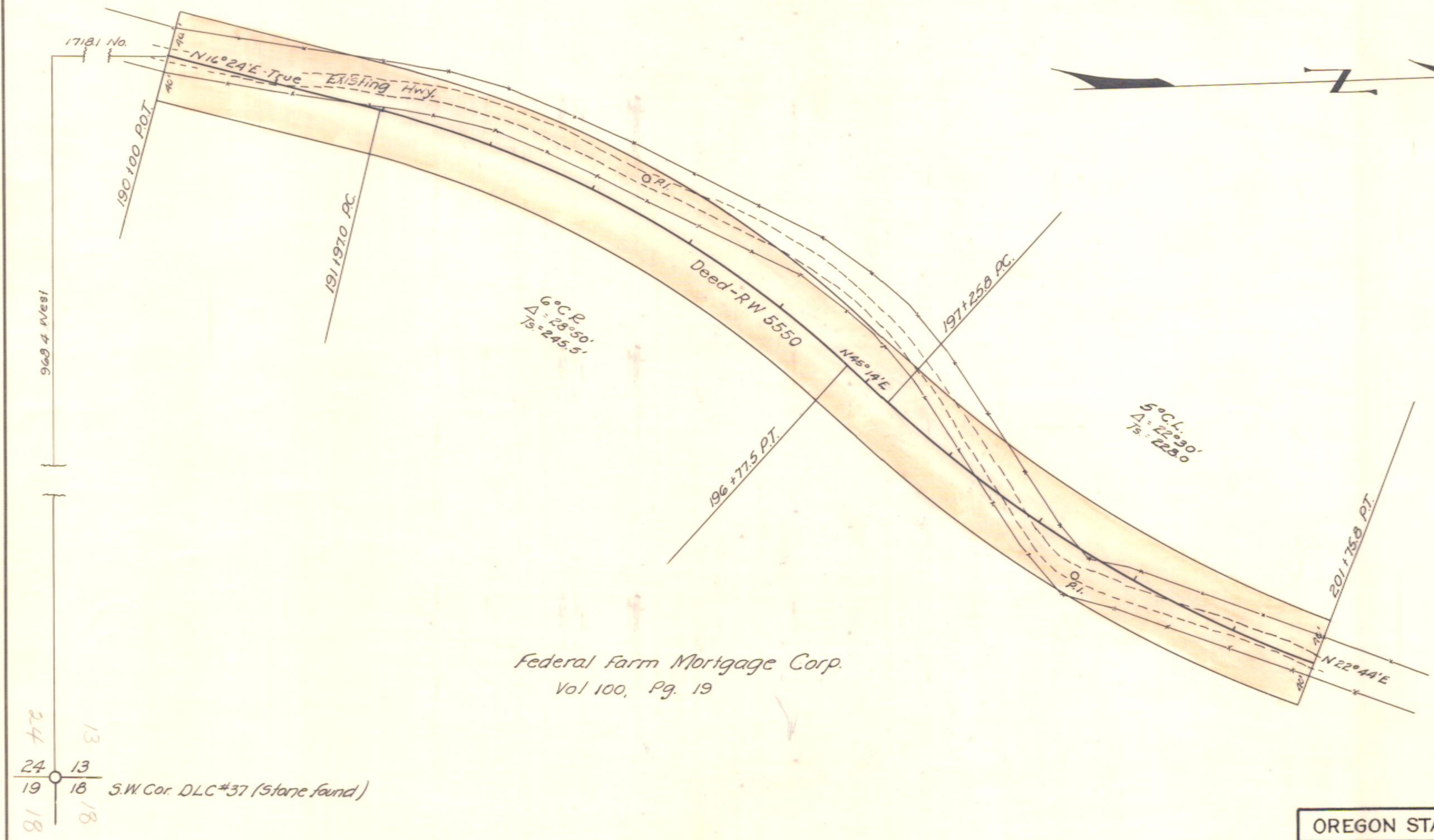


7961

SEC. 13 T.30S, R.5W. WM



Federal Farm Mortgage Corp.
Vol 100, Pg. 19

OREGON STATE HIGHWAY DEPARTMENT	
To be Acquired From	Federal Farm Mort. Corp.
For	Right of Way
Highway	Tiller-Trail Secondary
County	Douglas
Scale 1in = 100ft.	Date April, 1940

NOTE: SEE FILE 48833
FOR ROAD ESTABLISHMENT
DOCUMENTS

6