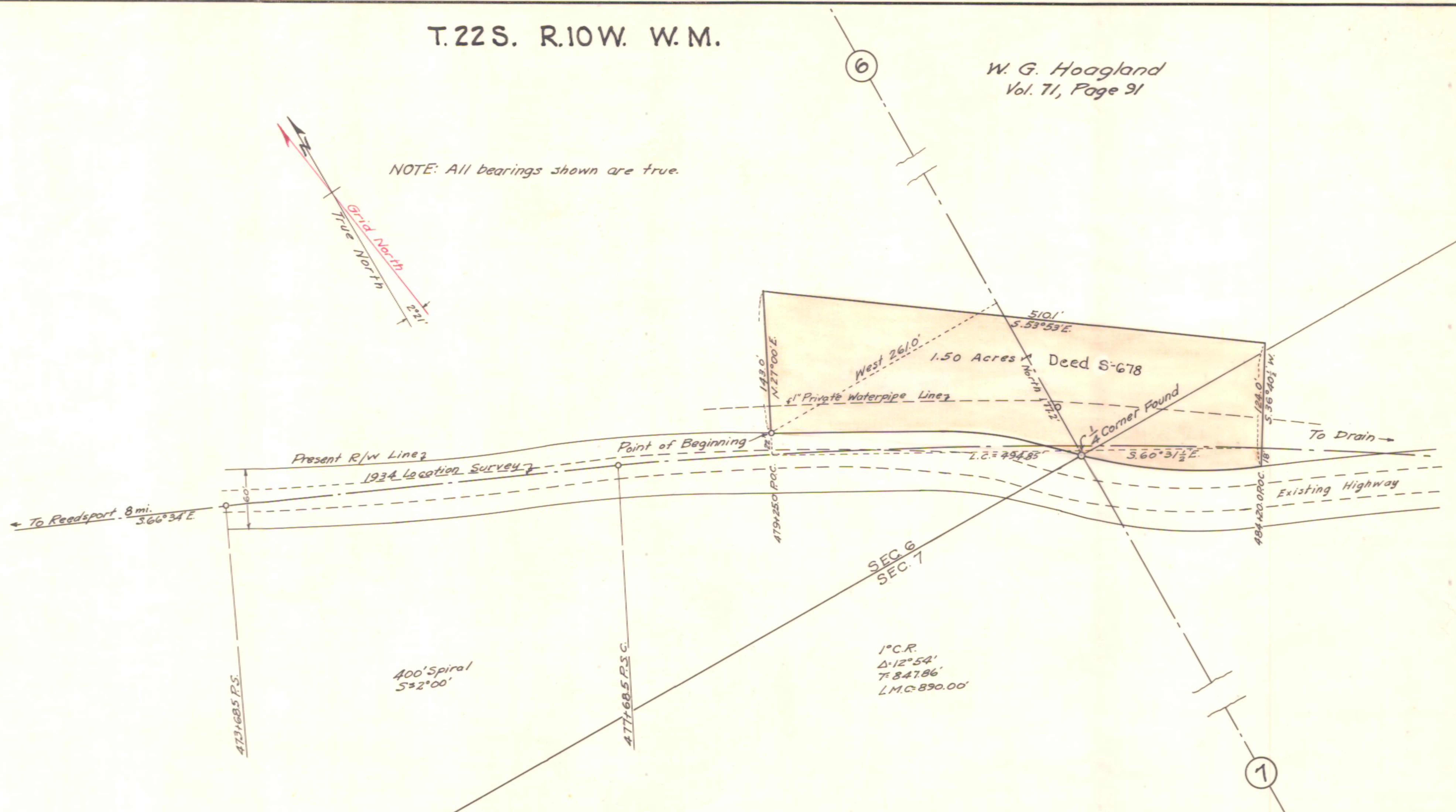
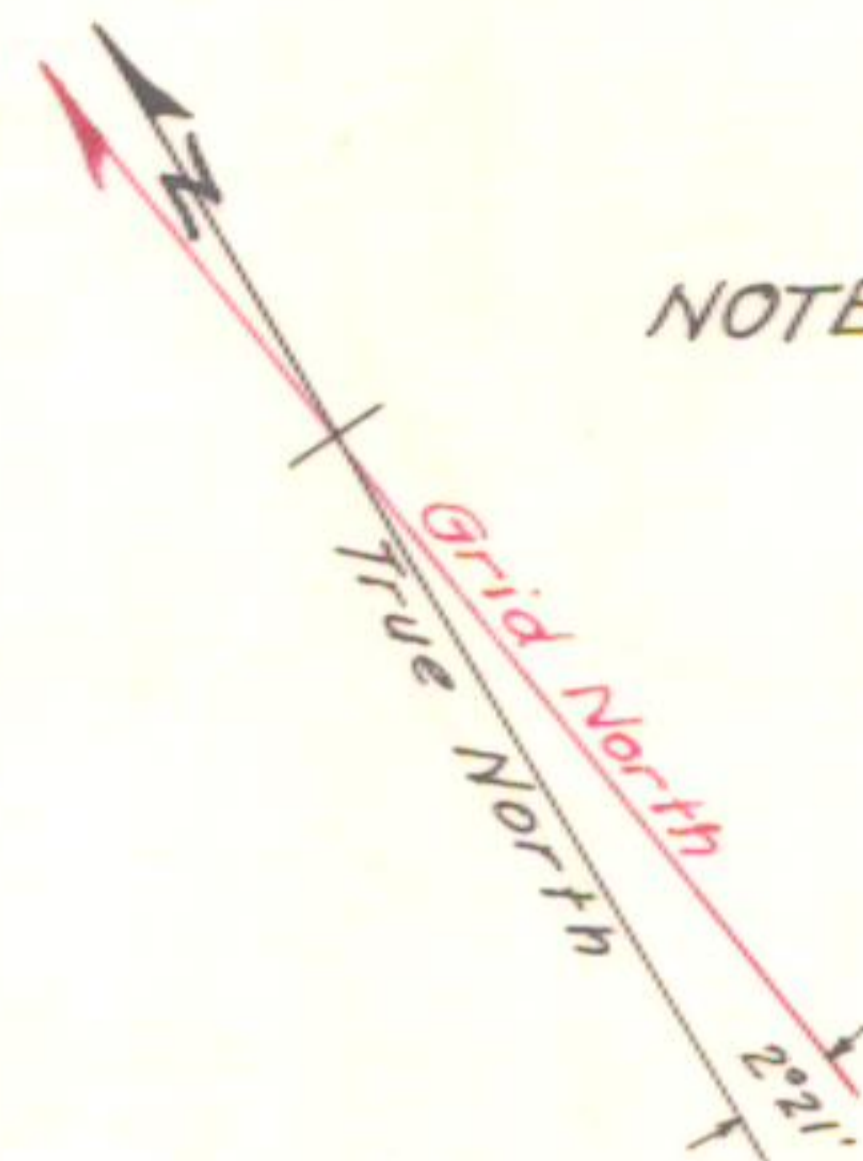


T.22 S. R.10 W. W.M.

W. G. Hoagland
Vol. 71, Page 91

NOTE: All bearings shown are true.



OREGON STATE HIGHWAY DEPARTMENT	
	W. G. Hoagland
For	Stockpile Site & Filler Pit
Highway	Umpqua
County	Douglas
Scale 1"=100'	Date 3-11-37