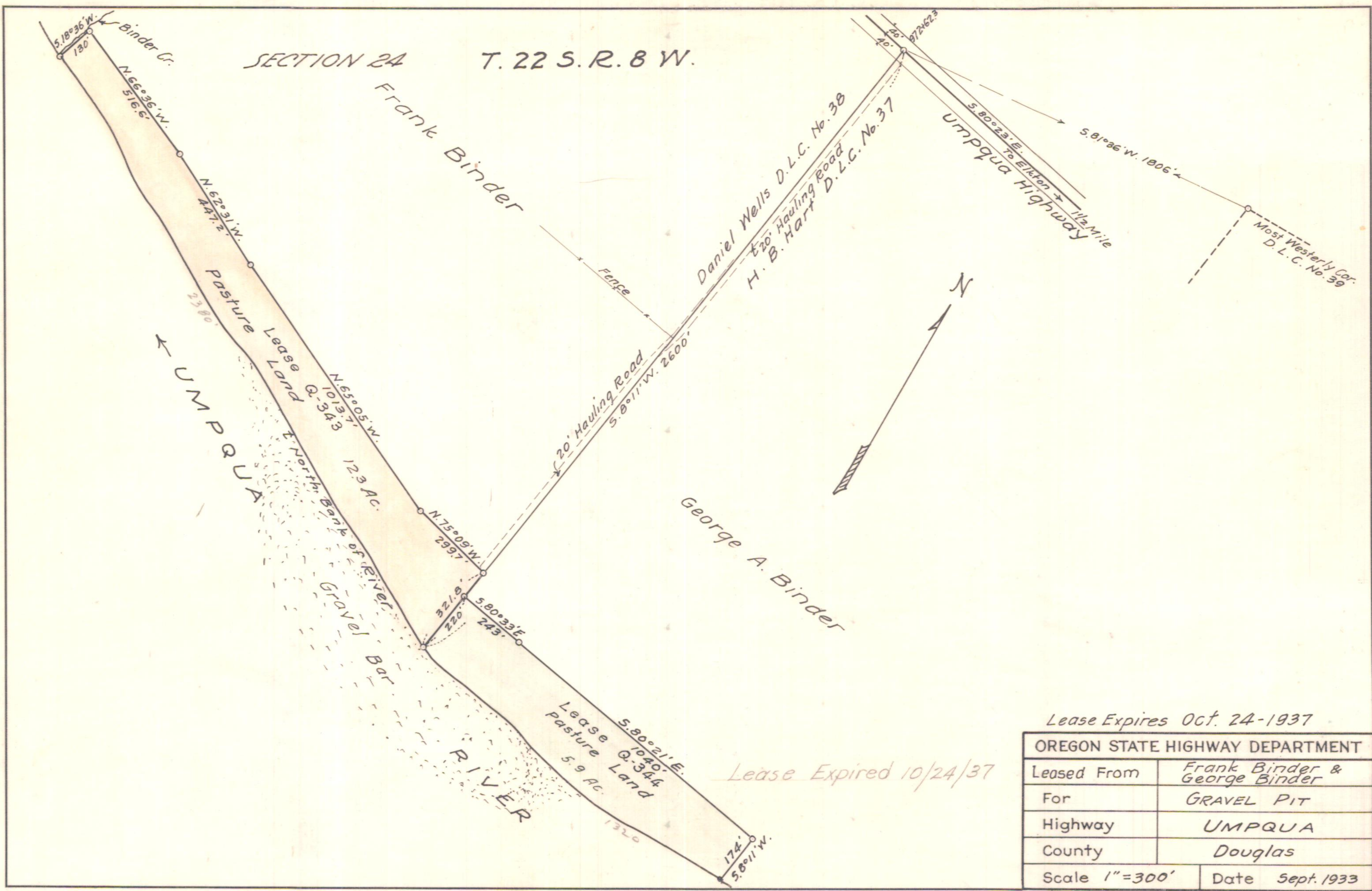


SECTION 24 T. 22 S. R. 8 W.



200-21
20-7-10

Lease Expired 10/24/37

Lease Expires Oct. 24-1937

OREGON STATE HIGHWAY DEPARTMENT	
Leased From	Frank Binder & George Binder
For	GRAVEL PIT
Highway	UMPQUA
County	Douglas
Scale 1"=300'	Date Sept. 1933

M