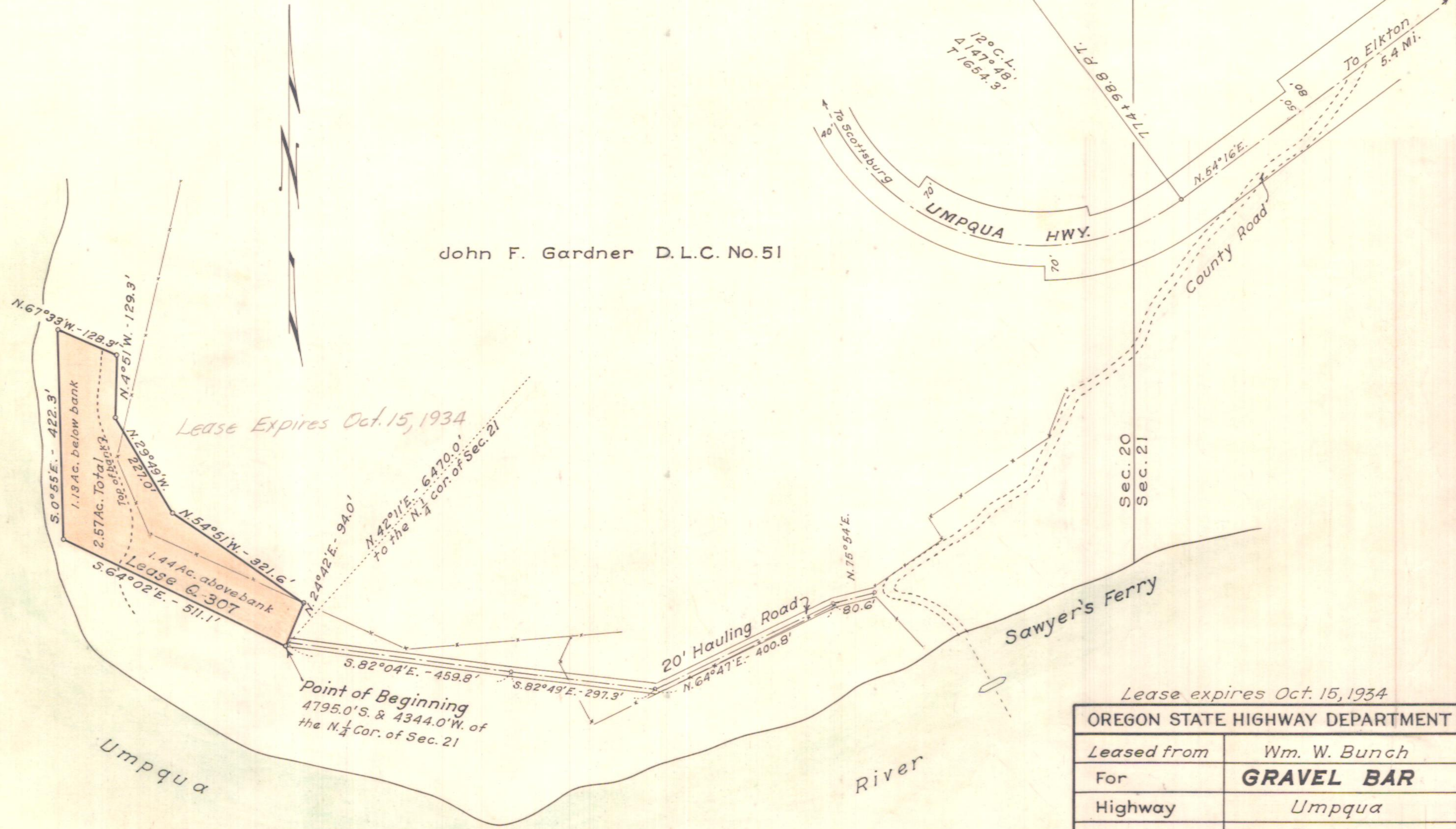


T. 22 S., R. 8 W., W. M.

S.E. 1/4 - Sec. 20

John F. Gardner D.L.C. No. 51



*Lease Expires Oct. 15, 1934*

*Lease expires Oct. 15, 1934*

OREGON STATE HIGHWAY DEPARTMENT	
Leased from	Wm. W. Bunch
For	<b>GRAVEL BAR</b>
Highway	Umpqua
County	Douglas
Scale 1" = 200'	Date Nov. 1932