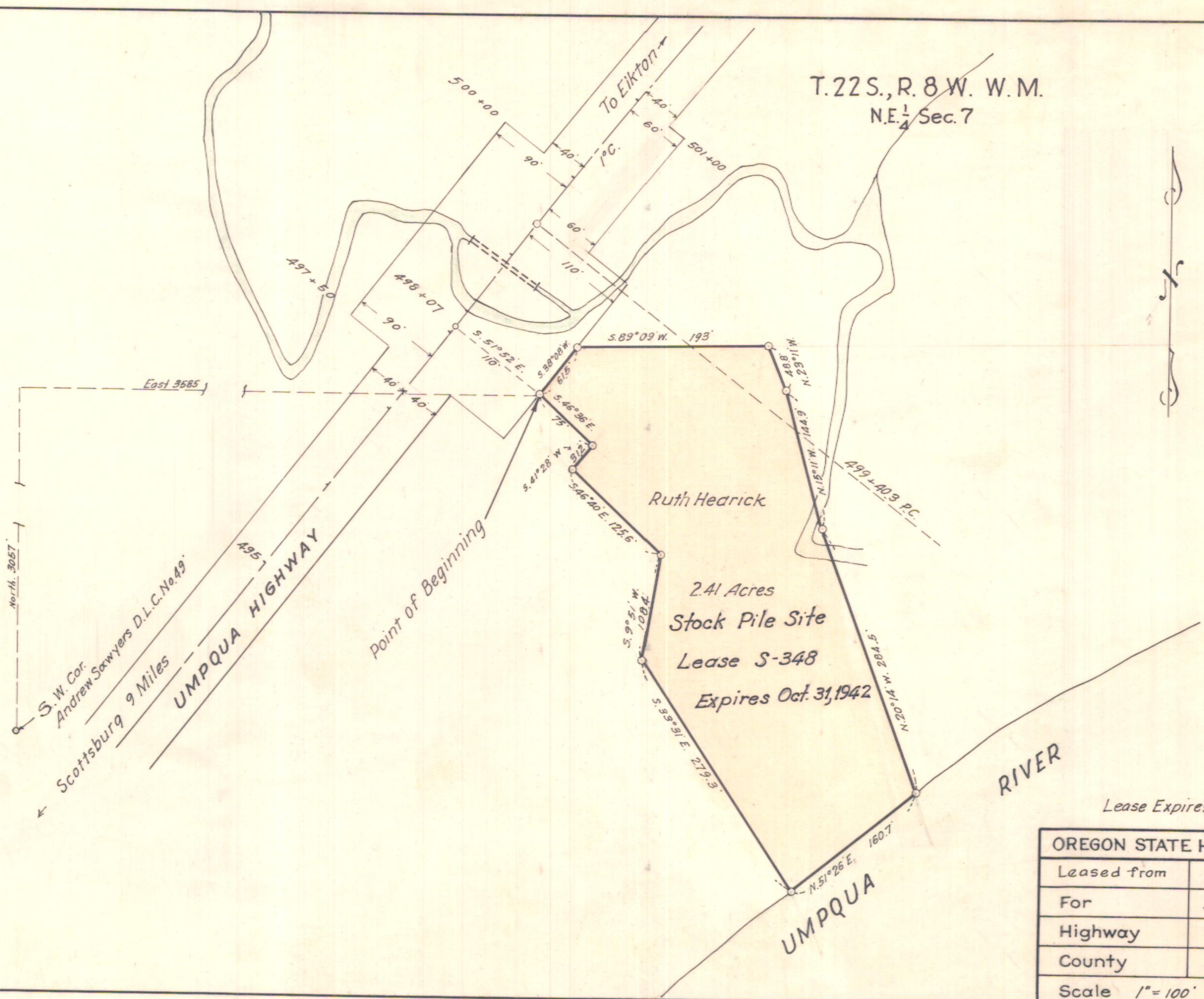


T.22 S., R. 8 W. W.M.
N.E. 1/4 Sec. 7



Ruth Hearick
 2.41 Acres
 Stock Pile Site
 Lease S-348
 Expires Oct. 31, 1942

Lease Expires Oct 31, 1942.

| OREGON STATE HIGHWAY DEPARTMENT | |
|---------------------------------|-----------------|
| Leased from | Ruth Hedrick |
| For | STOCK PILE SITE |
| Highway | UMPQUA |
| County | Douglas |
| Scale 1" = 100' | Date Nov. 1932 |

48-24-13

47