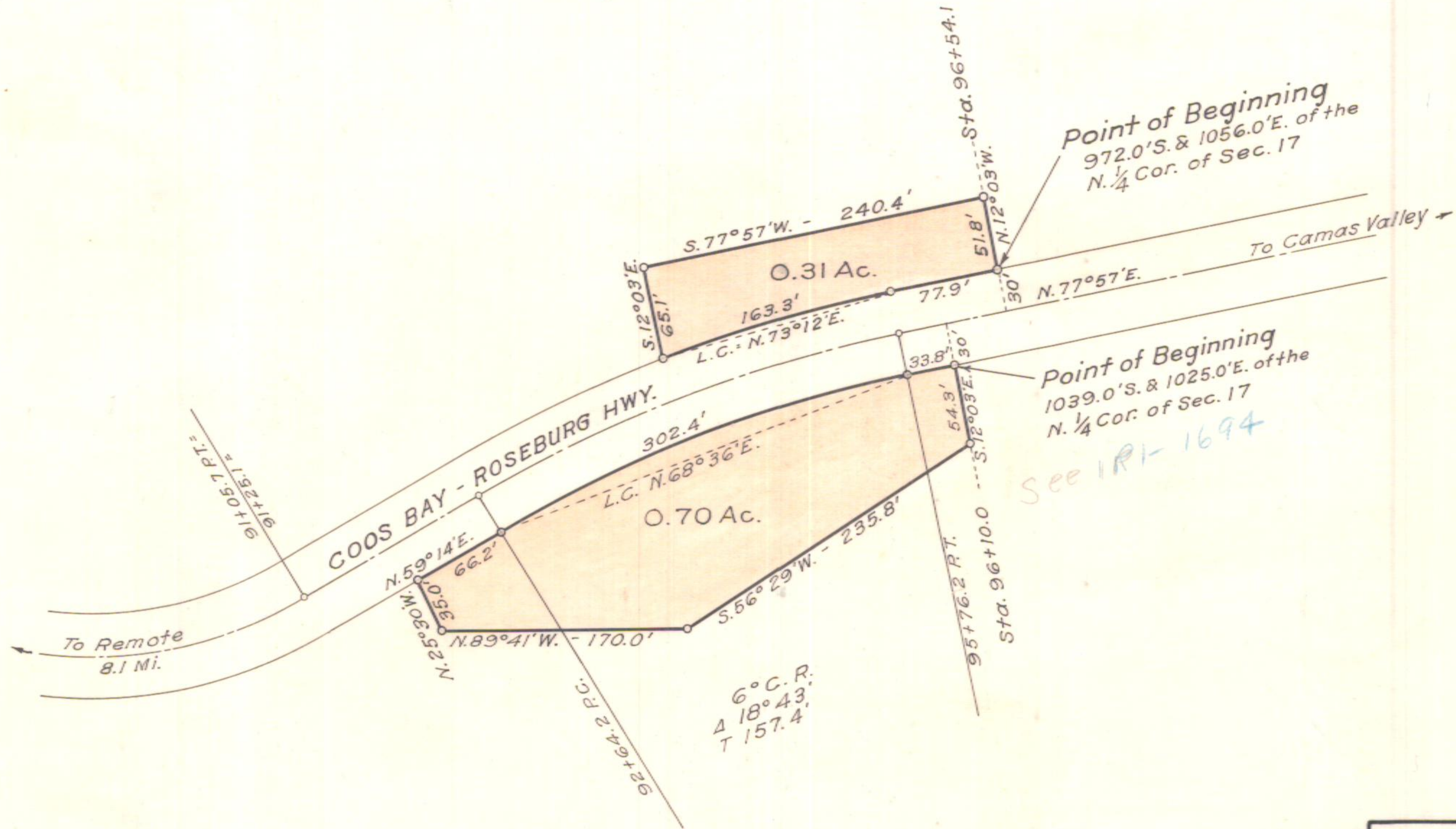


T. 30 S., R. 9 W., W. M.

N.E. 1/4 - Sec. 17



OREGON STATE HIGHWAY DEPARTMENT	
Leased from	Middle Fork White Cedar Co.
For	STOCK PILE SITES
Highway	Coos Bay - Roseburg
County	Douglas
Scale 1"=100'	Date Sept. 1932