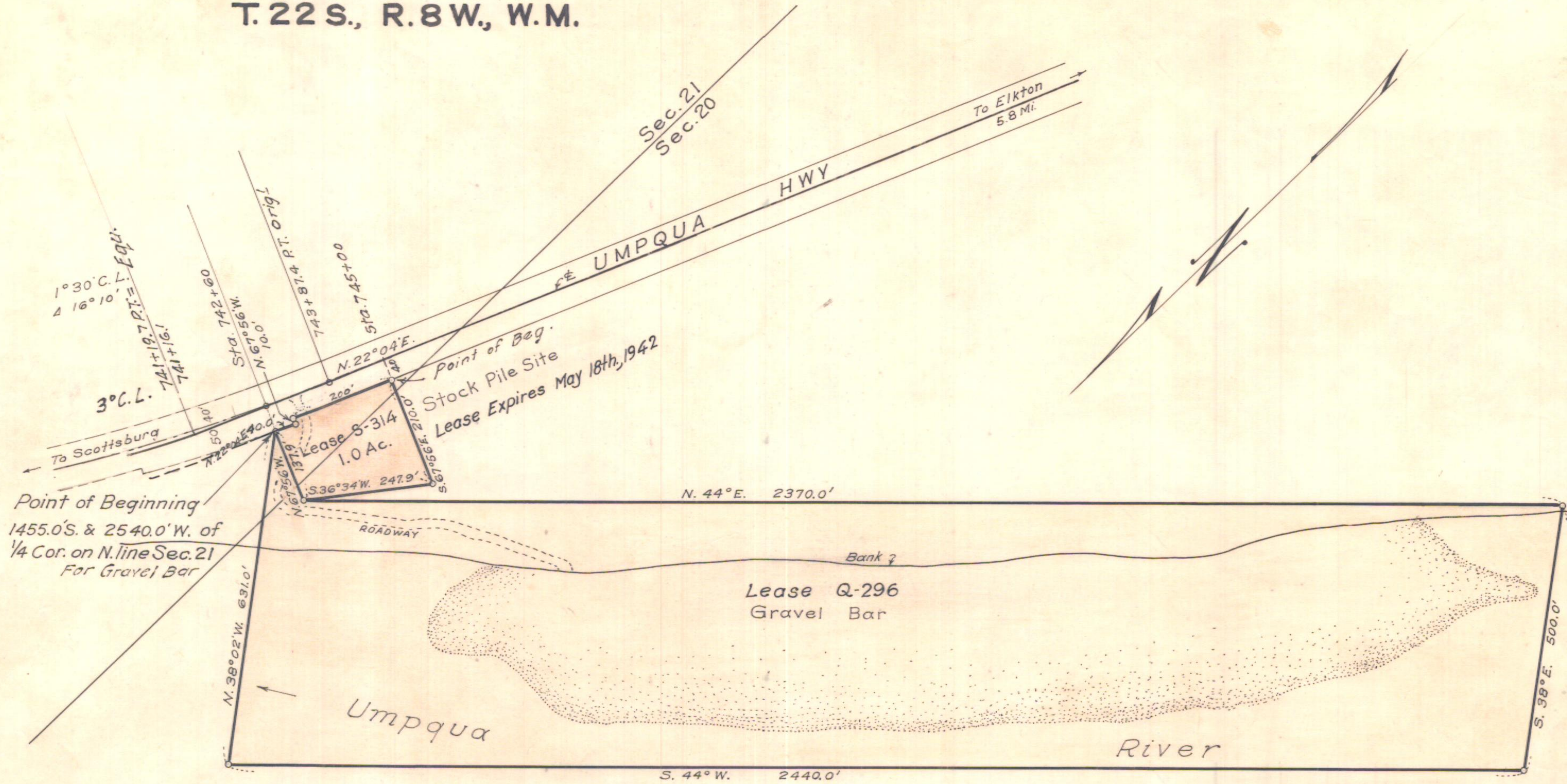


4590-A

T. 22 S., R. 8 W., W.M.



Lease expires May 18, 1942

OREGON STATE HIGHWAY DEPARTMENT	
Leased from	Wm. W. Bunch
For	STOCK PILE SITE & GRAVEL BAR
Highway	Umpqua
County	Douglas
Scale 1 in. = 200 ft.	Date June 1932